

Datasheet for ABIN7441379  
**anti-CrkL antibody (AA 1-303)**[Go to Product page](#)

## 3 Images

## Overview

Quantity:	100 µL
Target:	CrkL (CRKL)
Binding Specificity:	AA 1-303
Reactivity:	Human
Host:	Rabbit
Clonality:	Polyclonal
Conjugate:	This CrkL antibody is un-conjugated
Application:	Western Blotting (WB), Immunohistochemistry (IHC), Immunoprecipitation (IP), Immunocytochemistry (ICC)

## Product Details

Purpose:	Polyclonal Antibody to Crk Like Protein (CRKL)
Immunogen:	Recombinant Crk Like Protein (CRKL) corresponding to Met1~Glu303 (Accession # P46109)
Isotype:	IgG
Specificity:	The antibody is a rabbit polyclonal antibody raised against CRKL. It has been selected for its ability to recognize CRKL in immunohistochemical staining and western blotting.
Cross-Reactivity:	Mouse, Pig, Rat
Purification:	Antigen-specific affinity chromatography followed by Protein A affinity chromatography

## Target Details

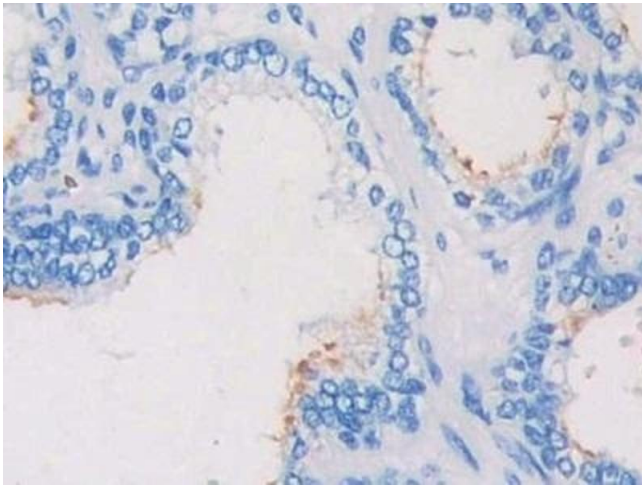
Target:	CrkL (CRKL)
Alternative Name:	Crk Like Protein ( <a href="#">CRKL Products</a> )
Background:	V-Crk Sarcoma Virus CT10 Oncogene Homolog(avian)-Like
Pathways:	<a href="#">Interferon-gamma Pathway</a> , <a href="#">Neurotrophin Signaling Pathway</a> , <a href="#">Signaling of Hepatocyte Growth Factor Receptor</a>

## Application Details

Application Notes:	Western blotting: 0.5-2 µg/mL 1:290-1200 Immunohistochemistry: 5-20 µg/mL 1:29-120 Immunocytochemistry: 5-20 µg/mL 1:29-120 Optimal working dilutions must be determined by end user.
Comment:	The thermal stability is described by the loss rate. The loss rate was determined by accelerated thermal degradation test, that is, incubate the protein at 37°C for 48h, and no obvious degradation and precipitation were observed. The loss rate is less than 5% within the expiration date under appropriate storage condition.
Restrictions:	For Research Use only

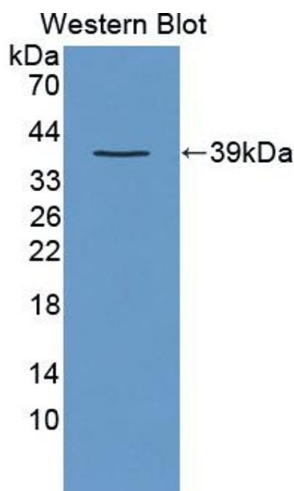
## Handling

Format:	Liquid
Buffer:	0.01M PBS, pH 7.4, containing 0.05 % Proclin-300, 50 % glycerol.
Preservative:	ProClin
Precaution of Use:	This product contains ProClin: a POISONOUS AND HAZARDOUS SUBSTANCE which should be handled by trained staff only.
Storage:	4 °C,-20 °C
Storage Comment:	Store at 4°C for frequent use. Stored at -20°C in a manual defrost freezer for two year without detectable loss of activity. Avoid repeated freeze-thaw cycles.
Expiry Date:	24 months



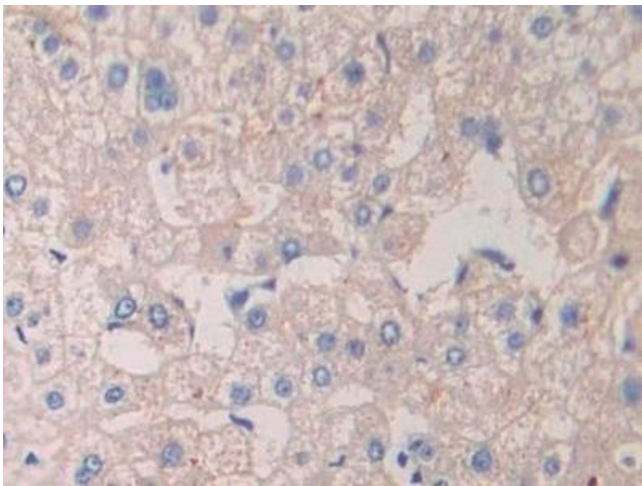
Immunohistochemistry

**Image 1.** Detection of CRKL in Human Prostate Tissue using Polyclonal Antibody to Crk Like Protein (CRKL)



Western Blotting

**Image 2.** Detection of Recombinant CRKL, Human using Polyclonal Antibody to Crk Like Protein (CRKL)



Immunohistochemistry

**Image 3.** Detection of CRKL in Human Liver Tissue using Polyclonal Antibody to Crk Like Protein (CRKL)