



[Go to Product page](#)

Datasheet for ABIN7441502
anti-ISLR antibody (AA 19-428)

5 Images

Overview

Quantity:	100 µL
Target:	ISLR
Binding Specificity:	AA 19-428
Reactivity:	Human
Host:	Rabbit
Clonality:	Polyclonal
Conjugate:	This ISLR antibody is un-conjugated
Application:	Western Blotting (WB), Immunohistochemistry (IHC), Immunoprecipitation (IP), Immunocytochemistry (ICC)

Product Details

Purpose:	Polyclonal Antibody to Immunoglobulin Superfamily Containing Leucine Rich Repeat Protein (ISLR)
Immunogen:	Recombinant Immunoglobulin Superfamily Containing Leucine Rich Repeat Protein (ISLR) corresponding to Cys19~Phe428 with N-terminal His Tag
Isotype:	IgG
Specificity:	The antibody is a rabbit polyclonal antibody raised against ISLR. It has been selected for its ability to recognize ISLR in immunohistochemical staining and western blotting.
Purification:	Antigen-specific affinity chromatography followed by Protein A affinity chromatography

Target Details

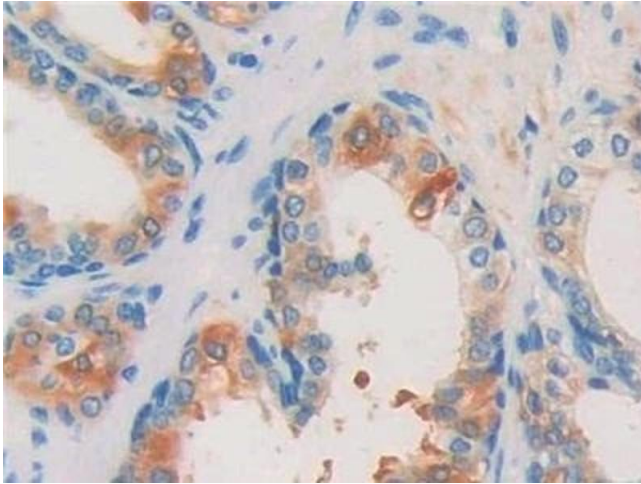
Target:	ISLR
Alternative Name:	Immunoglobulin Superfamily Containing Leucine Rich Repeat Protein (ISLR Products)

Application Details

Application Notes:	Western blotting: 0.5-2 µg/mL Immunohistochemistry: 5-20 µg/mL Immunocytochemistry: 5-20 µg/mL Optimal working dilutions must be determined by end user.
Comment:	The thermal stability is described by the loss rate. The loss rate was determined by accelerated thermal degradation test, that is, incubate the protein at 37°C for 48h, and no obvious degradation and precipitation were observed. The loss rate is less than 5% within the expiration date under appropriate storage condition.
Restrictions:	For Research Use only

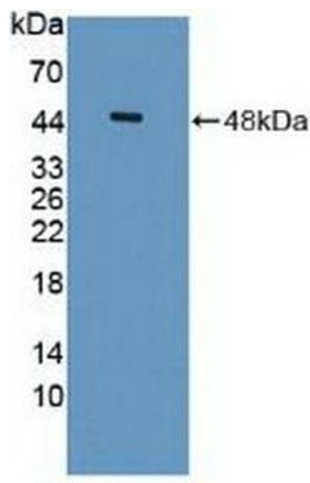
Handling

Format:	Liquid
Buffer:	0.01M PBS, pH 7.4, containing 0.05 % Proclin-300, 50 % glycerol.
Preservative:	ProClin
Precaution of Use:	This product contains ProClin: a POISONOUS AND HAZARDOUS SUBSTANCE which should be handled by trained staff only.
Storage:	4 °C,-20 °C
Storage Comment:	Store at 4°C for frequent use. Stored at -20°C in a manual defrost freezer for two year without detectable loss of activity. Avoid repeated freeze-thaw cycles.
Expiry Date:	24 months



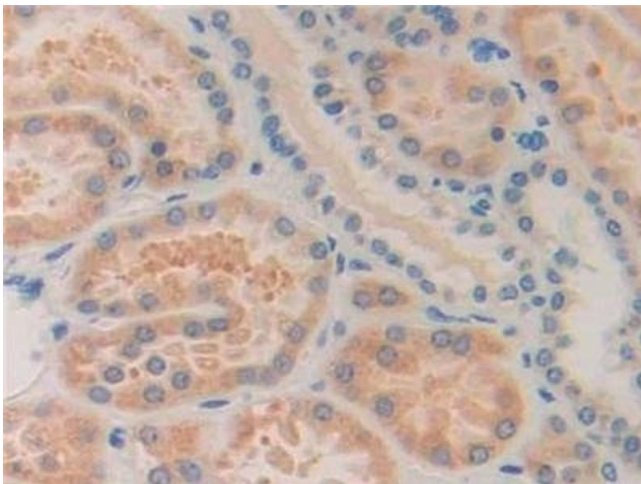
Immunohistochemistry

Image 1. Detection of ISLR in Human Prostate Tissue using Polyclonal Antibody to Immunoglobulin Superfamily Containing Leucine Rich Repeat Protein (ISLR)



Western Blotting

Image 2. Detection of Recombinant ISLR, Human using Polyclonal Antibody to Immunoglobulin Superfamily Containing Leucine Rich Repeat Protein (ISLR)



Immunohistochemistry

Image 3. Detection of ISLR in Human Kidney Tissue using Polyclonal Antibody to Immunoglobulin Superfamily Containing Leucine Rich Repeat Protein (ISLR)

Please check the [product details page](#) for more images. Overall 5 images are available for ABIN7441502.