

Datasheet for ABIN7441526  
**anti-GUCY1B3 antibody (AA 408-619)**[Go to Product page](#)

## 4 Images

## Overview

Quantity:	100 µL
Target:	GUCY1B3
Binding Specificity:	AA 408-619
Reactivity:	Human
Host:	Rabbit
Clonality:	Polyclonal
Conjugate:	This GUCY1B3 antibody is un-conjugated
Application:	Western Blotting (WB), ELISA, Immunohistochemistry (Paraffin-embedded Sections) (IHC (p)), Immunocytochemistry (ICC), Immunohistochemistry (Frozen Sections) (IHC (fro))

## Product Details

Purpose:	Polyclonal Antibody to Guanylate Cyclase 1 Beta 3 (GUCY1b3)
Immunogen:	Recombinant Guanylate Cyclase 1 Beta 3 (GUCY1b3) corresponding to His408~Asp619
Isotype:	IgG
Specificity:	The antibody is a rabbit polyclonal antibody raised against GUCY1b3. It has been selected for its ability to recognize GUCY1b3 in immunohistochemical staining and western blotting.
Cross-Reactivity:	Mouse, Pig, Rat
Purification:	Antigen-specific affinity chromatography followed by Protein A affinity chromatography

## Target Details

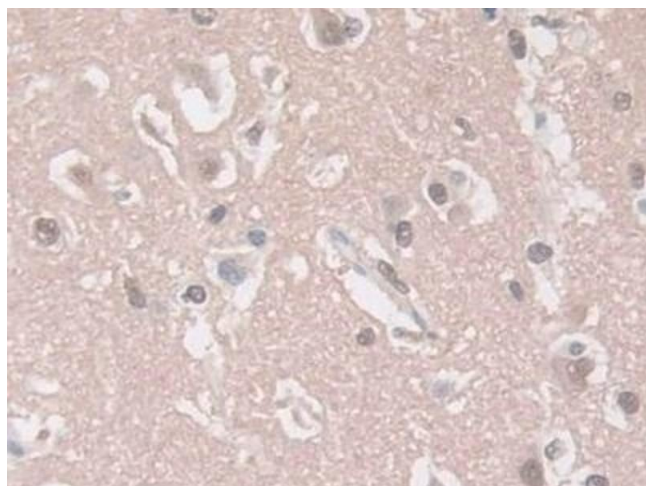
Target:	GUCY1B3
Alternative Name:	Guanylate Cyclase 1 Beta 3 ( <a href="#">GUCY1B3 Products</a> )
Background:	GC-S-beta-1, GC-SB3, GUC1B3, GUCB3, GUCSB3, Soluble guanylate cyclase small subunit, Guanylate cyclase soluble subunit beta-3
Pathways:	<a href="#">Transition Metal Ion Homeostasis</a>

## Application Details

Application Notes:	Western blotting: 1-5 µg/mL Immunocytochemistry in formalin fixed cells: 5-20 µg/mL Immunohistochemistry in formalin fixed frozen section: 5-20 µg/mL Immunohistochemistry in paraffin section: 5-20 µg/mL Enzyme-linked Immunosorbent Assay: 0.05-2 µg/mL Optimal working dilutions must be determined by end user.
Comment:	The thermal stability is described by the loss rate. The loss rate was determined by accelerated thermal degradation test, that is, incubate the protein at 37°C for 48h, and no obvious degradation and precipitation were observed. The loss rate is less than 5% within the expiration date under appropriate storage condition.
Restrictions:	For Research Use only

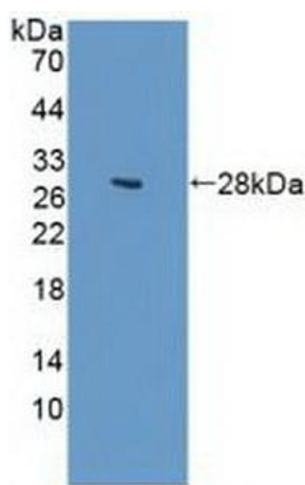
## Handling

Format:	Liquid
Buffer:	0.01M PBS, pH 7.4, containing 0.05 % Proclin-300, 50 % glycerol.
Preservative:	ProClin
Precaution of Use:	This product contains ProClin: a POISONOUS AND HAZARDOUS SUBSTANCE which should be handled by trained staff only.
Storage:	4 °C,-20 °C
Storage Comment:	Store at 4°C for frequent use. Stored at -20°C in a manual defrost freezer for two year without detectable loss of activity. Avoid repeated freeze-thaw cycles.
Expiry Date:	24 months



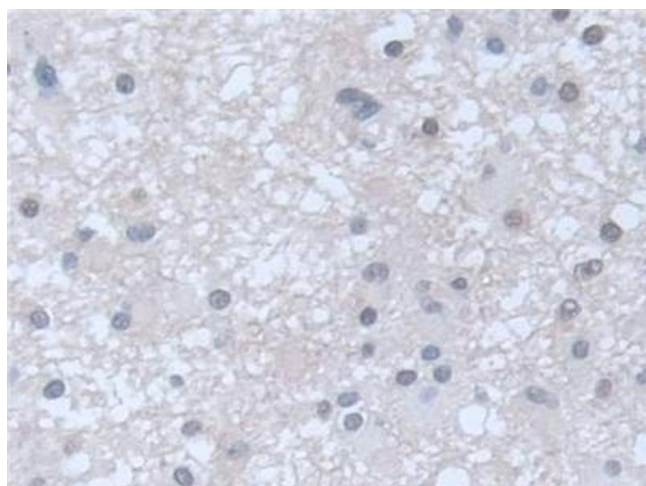
#### Immunohistochemistry

**Image 1.** Detection of GUCY1b3 in Human Cerebrum Tissue using Polyclonal Antibody to Guanylate Cyclase 1 Beta 3 (GUCY1b3)



#### Western Blotting

**Image 2.** Detection of Recombinant GUCY1b3, Human using Polyclonal Antibody to Guanylate Cyclase 1 Beta 3 (GUCY1b3)



#### Immunohistochemistry

**Image 3.** Detection of GUCY1b3 in Human Glioma Tissue using Polyclonal Antibody to Guanylate Cyclase 1 Beta 3 (GUCY1b3)

Please check the [product details page](#) for more images. Overall 4 images are available for ABIN7441526.