

Datasheet for ABIN7441604  
**anti-ISL1 antibody (AA 1-191)**[Go to Product page](#)

## 1 Image

## Overview

Quantity:	100 µL
Target:	ISL1
Binding Specificity:	AA 1-191
Reactivity:	Human
Host:	Rabbit
Clonality:	Polyclonal
Conjugate:	This ISL1 antibody is un-conjugated
Application:	Western Blotting (WB), Immunohistochemistry (IHC), Immunoprecipitation (IP), Immunocytochemistry (ICC)

## Product Details

Purpose:	Polyclonal Antibody to ISL LIM Homeobox Protein 1 (ISL1)
Immunogen:	Recombinant ISL LIM Homeobox Protein 1 (ISL1) corresponding to Met1~Gln191
Isotype:	IgG
Specificity:	The antibody is a rabbit polyclonal antibody raised against ISL1. It has been selected for its ability to recognize ISL1 in immunohistochemical staining and western blotting.
Cross-Reactivity:	Mouse, Rat
Purification:	Antigen-specific affinity chromatography followed by Protein A affinity chromatography

## Target Details

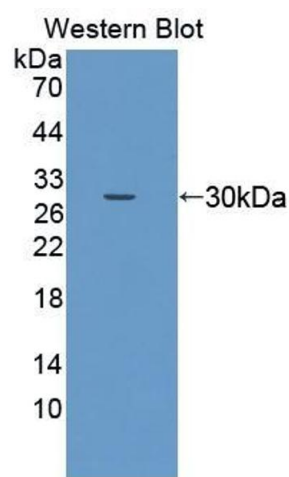
Target:	ISL1
Alternative Name:	ISL LIM Homeobox Protein 1 ( <a href="#">ISL1 Products</a> )
Background:	Islet-1, ISL1 Transcription Factor, LIM/Homeodomain, Insulin gene enhancer protein ISL-1
Pathways:	<a href="#">Positive Regulation of Peptide Hormone Secretion</a> , <a href="#">Intracellular Steroid Hormone Receptor Signaling Pathway</a> , <a href="#">Peptide Hormone Metabolism</a> , <a href="#">Regulation of Intracellular Steroid Hormone Receptor Signaling</a> , <a href="#">Nuclear Hormone Receptor Binding</a> , <a href="#">Chromatin Binding</a>

## Application Details

Application Notes:	Western blotting: 0.5-2 µg/mL 1:150-600 Immunohistochemistry: 5-20 µg/mL 1:15-60 Immunocytochemistry: 5-20 µg/mL 1:15-60 Optimal working dilutions must be determined by end user.
Comment:	The thermal stability is described by the loss rate. The loss rate was determined by accelerated thermal degradation test, that is, incubate the protein at 37°C for 48h, and no obvious degradation and precipitation were observed. The loss rate is less than 5% within the expiration date under appropriate storage condition.
Restrictions:	For Research Use only

## Handling

Format:	Liquid
Buffer:	0.01M PBS, pH 7.4, containing 0.05 % Proclin-300, 50 % glycerol.
Preservative:	ProClin
Precaution of Use:	This product contains ProClin: a POISONOUS AND HAZARDOUS SUBSTANCE which should be handled by trained staff only.
Storage:	4 °C, -20 °C
Storage Comment:	Store at 4°C for frequent use. Stored at -20°C in a manual defrost freezer for two year without detectable loss of activity. Avoid repeated freeze-thaw cycles.
Expiry Date:	24 months



Western Blotting

**Image 1.** Detection of Recombinant ISL1, Human using Polyclonal Antibody to ISL LIM Homeobox Protein 1 (ISL1)