

Datasheet for ABIN7441631
anti-WWP2 antibody (AA 601-870)[Go to Product page](#)

2 Images

Overview

Quantity:	100 µL
Target:	WWP2
Binding Specificity:	AA 601-870
Reactivity:	Human
Host:	Rabbit
Clonality:	Polyclonal
Conjugate:	This WWP2 antibody is un-conjugated
Application:	Western Blotting (WB), Immunohistochemistry (IHC), Immunoprecipitation (IP), Immunocytochemistry (ICC)

Product Details

Purpose:	Polyclonal Antibody to WW Domain Containing E3 Ubiquitin Protein Ligase 2 (WWP2)
Immunogen:	Recombinant WW Domain Containing E3 Ubiquitin Protein Ligase 2 (WWP2) corresponding to His601~Glu870
Isotype:	IgG
Specificity:	The antibody is a rabbit polyclonal antibody raised against WWP2. It has been selected for its ability to recognize WWP2 in immunohistochemical staining and western blotting.
Cross-Reactivity:	Mouse, Pig
Purification:	Antigen-specific affinity chromatography followed by Protein A affinity chromatography

Target Details

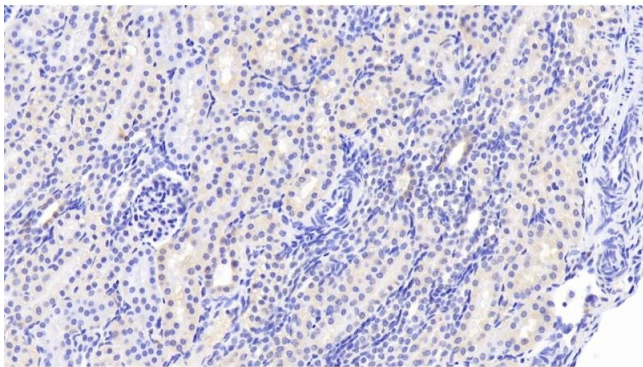
Target:	WWP2
Alternative Name:	WW Domain Containing E3 Ubiquitin Protein Ligase 2 (WWP2 Products)
Background:	AIP2, WWp2-like, Atrophin-1-interacting protein 2, NEDD4-like E3 ubiquitin-protein ligase WWP2
Pathways:	Negative Regulation of Transporter Activity

Application Details

Application Notes:	Western blotting: 0.5-2 µg/mL 1:100-400 Immunohistochemistry: 5-20 µg/mL 1:10-40 Immunocytochemistry: 5-20 µg/mL 1:10-40 Optimal working dilutions must be determined by end user.
Comment:	The thermal stability is described by the loss rate. The loss rate was determined by accelerated thermal degradation test, that is, incubate the protein at 37°C for 48h, and no obvious degradation and precipitation were observed. The loss rate is less than 5% within the expiration date under appropriate storage condition.
Restrictions:	For Research Use only

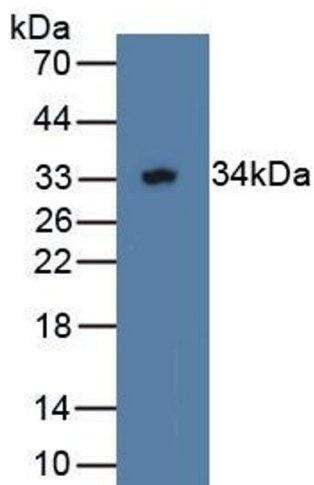
Handling

Format:	Liquid
Buffer:	0.01M PBS, pH 7.4, containing 0.05 % Proclin-300, 50 % glycerol.
Preservative:	ProClin
Precaution of Use:	This product contains ProClin: a POISONOUS AND HAZARDOUS SUBSTANCE which should be handled by trained staff only.
Storage:	4 °C,-20 °C
Storage Comment:	Store at 4°C for frequent use. Stored at -20°C in a manual defrost freezer for two year without detectable loss of activity. Avoid repeated freeze-thaw cycles.
Expiry Date:	24 months



Immunohistochemistry

Image 1. Detection of WWP2 in Human Kidney Tissue using Polyclonal Antibody to WW Domain Containing E3 Ubiquitin Protein Ligase 2 (WWP2)



Western Blotting

Image 2. Detection of Recombinant WWP2, Human using Polyclonal Antibody to WW Domain Containing E3 Ubiquitin Protein Ligase 2 (WWP2)