



[Go to Product page](#)

Datasheet for ABIN7441667
anti-WWC1 antibody (AA 847-1094)

7 Images

Overview

Quantity:	100 µL
Target:	WWC1
Binding Specificity:	AA 847-1094
Reactivity:	Mouse
Host:	Rabbit
Clonality:	Polyclonal
Conjugate:	This WWC1 antibody is un-conjugated
Application:	Western Blotting (WB), Immunohistochemistry (IHC), Immunoprecipitation (IP), Immunocytochemistry (ICC)

Product Details

Purpose:	Polyclonal Antibody to Kidney And Brain Protein (KIBRA)
Immunogen:	Recombinant Kidney And Brain Protein (KIBRA) corresponding to Glu847~Met1094 with N-terminal His Tag
Isotype:	IgG
Specificity:	The antibody is a rabbit polyclonal antibody raised against KIBRA. It has been selected for its ability to recognize KIBRA in immunohistochemical staining and western blotting.
Cross-Reactivity:	Human, Rat
Purification:	Antigen-specific affinity chromatography followed by Protein A affinity chromatography

Target Details

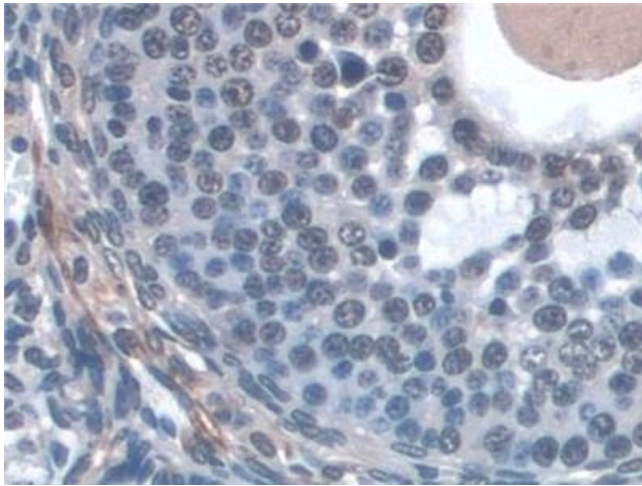
Target:	WWC1
Alternative Name:	Kidney And Brain Protein (WWC1 Products)
Background:	WWC1, WW Domain Containing Protein 1, WW,C2 And Coiled-Coil Domain Containing 1, HBeAg-binding protein 3

Application Details

Application Notes:	Western blotting: 0.5-2 µg/mL 1:210-860 Immunohistochemistry: 5-20 µg/mL 1:21-86 Immunocytochemistry: 5-20 µg/mL 1:21-86 Optimal working dilutions must be determined by end user.
Comment:	The thermal stability is described by the loss rate. The loss rate was determined by accelerated thermal degradation test, that is, incubate the protein at 37°C for 48h, and no obvious degradation and precipitation were observed. The loss rate is less than 5% within the expiration date under appropriate storage condition.
Restrictions:	For Research Use only

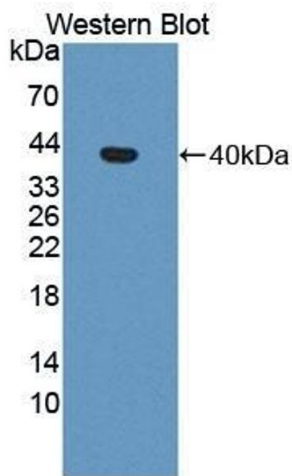
Handling

Format:	Liquid
Buffer:	PBS, pH 7.4, containing 0.02 % Sodium azide, 50 % glycerol.
Preservative:	Sodium azide
Precaution of Use:	This product contains Sodium azide: a POISONOUS AND HAZARDOUS SUBSTANCE which should be handled by trained staff only.
Storage:	4 °C,-20 °C
Storage Comment:	Store at 4°C for frequent use. Stored at -20°C in a manual defrost freezer for two year without detectable loss of activity. Avoid repeated freeze-thaw cycles.
Expiry Date:	24 months



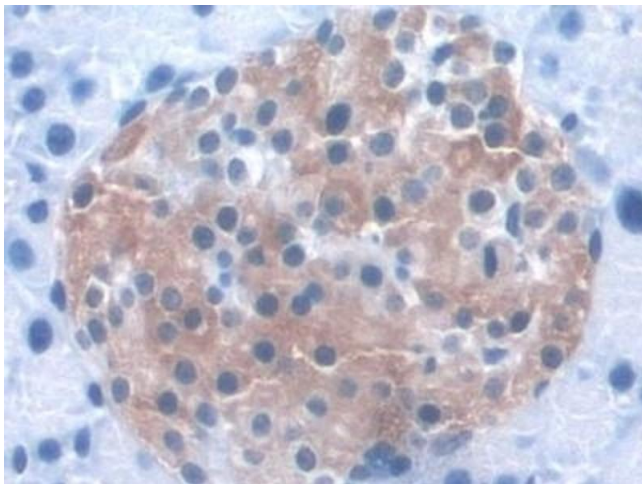
Immunohistochemistry

Image 1. Detection of KIBRA in Mouse Ovary Tissue using Polyclonal Antibody to Kidney And Brain Protein (KIBRA)



Western Blotting

Image 2. Detection of Recombinant KIBRA, Mouse using Polyclonal Antibody to Kidney And Brain Protein (KIBRA)



Immunohistochemistry

Image 3. Detection of KIBRA in Mouse Pancreas Tissue using Polyclonal Antibody to Kidney And Brain Protein (KIBRA)

Please check the [product details page](#) for more images. Overall 7 images are available for ABIN7441667.