



[Go to Product page](#)

Datasheet for ABIN7441748  
**anti-CHL1 antibody (AA 35-328)**

1 Image

### Overview

Quantity:	100 µL
Target:	CHL1
Binding Specificity:	AA 35-328
Reactivity:	Human
Host:	Rabbit
Clonality:	Polyclonal
Application:	Western Blotting (WB), Immunohistochemistry (IHC), Immunoprecipitation (IP), Immunocytochemistry (ICC)

### Product Details

Purpose:	Polyclonal Antibody to Cell Adhesion Molecule With Homology To L1CAM (CHL1)
Immunogen:	Recombinant Cell Adhesion Molecule With Homology To L1CAM (CHL1) corresponding to Pro35~Glu328
Isotype:	IgG
Specificity:	The antibody is a rabbit polyclonal antibody raised against CHL1. It has been selected for its ability to recognize CHL1 in immunohistochemical staining and western blotting.
Purification:	Antigen-specific affinity chromatography followed by Protein A affinity chromatography

### Target Details

Target:	CHL1
Alternative Name:	Cell Adhesion Molecule With Homology To L1CAM ( <a href="#">CHL1 Products</a> )

## Target Details

---

Background: CALL, L1CAM2, Neural Cell Adhesion Molecule, Cell Adhesion Molecule L1-Like

## Application Details

---

Application Notes: Western blotting: 0.5-2 µg/mL  
Immunohistochemistry: 5-20 µg/mL  
Immunocytochemistry: 5-20 µg/mL  
Optimal working dilutions must be determined by end user.

Comment: The thermal stability is described by the loss rate. The loss rate was determined by accelerated thermal degradation test, that is, incubate the protein at 37°C for 48h, and no obvious degradation and precipitation were observed. The loss rate is less than 5% within the expiration date under appropriate storage condition.

Restrictions: For Research Use only

## Handling

---

Format: Liquid

Buffer: PBS, pH 7.4, containing 0.02 % Sodium azide, 50 % glycerol.

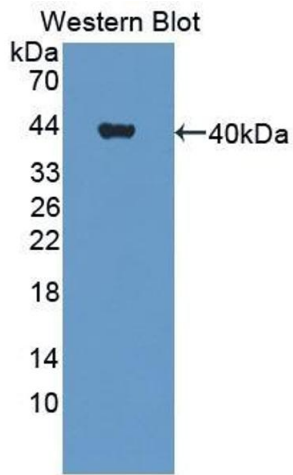
Preservative: Sodium azide

Precaution of Use: This product contains Sodium azide: a POISONOUS AND HAZARDOUS SUBSTANCE which should be handled by trained staff only.

Storage: 4 °C, -20 °C

Storage Comment: Store at 4°C for frequent use. Stored at -20°C in a manual defrost freezer for two year without detectable loss of activity. Avoid repeated freeze-thaw cycles.

Expiry Date: 24 months



### Western Blotting

**Image 1.** Detection of Recombinant CHL1, Human using Polyclonal Antibody to Cell Adhesion Molecule With Homology To L1CAM (CHL1)