

Datasheet for ABIN7441901
anti-CD235a/GYPA antibody (AA 1-108)[Go to Product page](#)

7 Images

Overview

| | |
|----------------------|---|
| Quantity: | 100 µL |
| Target: | CD235a/GYPA (GYPA) |
| Binding Specificity: | AA 1-108 |
| Reactivity: | Mouse |
| Host: | Rabbit |
| Clonality: | Polyclonal |
| Conjugate: | This CD235a/GYPA antibody is un-conjugated |
| Application: | Immunohistochemistry (IHC), Western Blotting (WB), Immunoprecipitation (IP), Immunocytochemistry (ICC) |

Product Details

| | |
|---------------|--|
| Purpose: | Polyclonal Antibody to Glycophorin A (GYPA) |
| Immunogen: | Recombinant Glycophorin A (GYPA) corresponding to Met1~Val108 with N-terminal His Tag |
| Isotype: | IgG |
| Specificity: | The antibody is a rabbit polyclonal antibody raised against GYPA. It has been selected for its ability to recognize GYPA in immunohistochemical staining and western blotting. |
| Purification: | Antigen-specific affinity chromatography followed by Protein A affinity chromatography |

Target Details

| | |
|---------|--------------------|
| Target: | CD235a/GYPA (GYPA) |
|---------|--------------------|

Target Details

| | |
|-------------------|---|
| Alternative Name: | Glycophorin A (GYPA Products) |
| Background: | CD235a, MN, MNS, GPA, GP _E rik, GPSAT, PAS-2, Gp ^{MI} III, HGp ^{MI} III, HGp ^{MI} IV, HGp ^{MI} X, HGp ^{MI} XI, HGp St a, Sialoglycoprotein alpha, MN sialoglycoprotein |
| Pathways: | Maintenance of Protein Location |

Application Details

| | |
|--------------------|---|
| Application Notes: | Western blotting: 0.5-2 µg/mL Immunohistochemistry: 5-20 µg/mL Immunocytochemistry: 5-20 µg/mL Optimal working dilutions must be determined by end user. |
| Comment: | The thermal stability is described by the loss rate. The loss rate was determined by accelerated thermal degradation test, that is, incubate the protein at 37°C for 48h, and no obvious degradation and precipitation were observed. The loss rate is less than 5% within the expiration date under appropriate storage condition. |
| Restrictions: | For Research Use only |

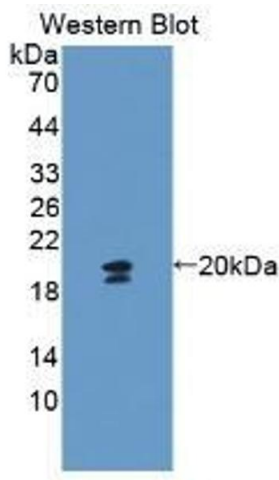
Handling

| | |
|--------------------|---|
| Format: | Liquid |
| Buffer: | PBS, pH 7.4, containing 0.02 % Sodium azide, 50 % glycerol. |
| Preservative: | Sodium azide |
| Precaution of Use: | This product contains Sodium azide: a POISONOUS AND HAZARDOUS SUBSTANCE which should be handled by trained staff only. |
| Storage: | 4 °C, -20 °C |
| Storage Comment: | Store at 4°C for frequent use. Stored at -20°C in a manual defrost freezer for two year without detectable loss of activity. Avoid repeated freeze-thaw cycles. |
| Expiry Date: | 24 months |



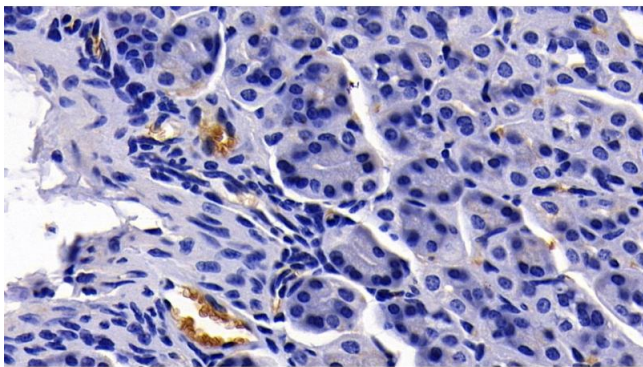
Western Blotting

Image 1. Detection of GYPA in Mouse Placenta lysate using Polyclonal Antibody to Glycophorin A (GYPA)



Western Blotting

Image 2. Detection of Recombinant GYPA, Mouse using Polyclonal Antibody to Glycophorin A (GYPA)



Immunohistochemistry

Image 3. Detection of GYPA in Mouse Stomach Tissue using Polyclonal Antibody to Glycophorin A (GYPA)

Please check the [product details page](#) for more images. Overall 7 images are available for ABIN7441901.