

Datasheet for ABIN7441916
anti-BCL3 antibody (AA 82-341)[Go to Product page](#)

2 Images

Overview

Quantity:	100 µL
Target:	BCL3
Binding Specificity:	AA 82-341
Reactivity:	Mouse
Host:	Rabbit
Clonality:	Polyclonal
Conjugate:	This BCL3 antibody is un-conjugated
Application:	Western Blotting (WB), Immunohistochemistry (IHC), Immunoprecipitation (IP), Immunocytochemistry (ICC)

Product Details

Purpose:	Polyclonal Antibody to B-Cell CLL/Lymphoma 3 (Bcl3)
Immunogen:	Recombinant B-Cell CLL/Lymphoma 3 (Bcl3) corresponding to Pro82~Leu341 with N-terminal His Tag
Isotype:	IgG
Specificity:	The antibody is a rabbit polyclonal antibody raised against Bcl3. It has been selected for its ability to recognize Bcl3 in immunohistochemical staining and western blotting.
Purification:	Antigen-specific affinity chromatography followed by Protein A affinity chromatography

Target Details

Target:	BCL3
---------	------

Target Details

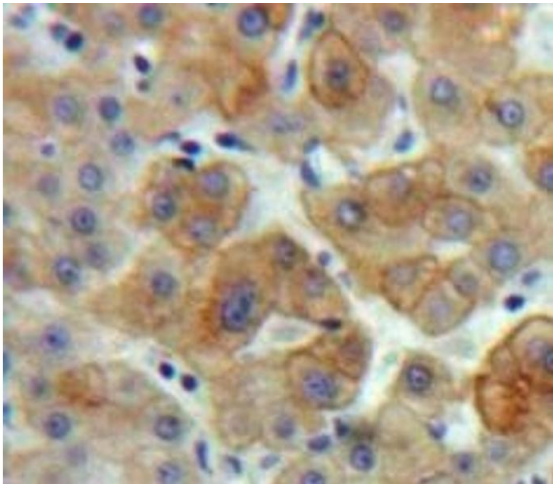
Alternative Name:	B-Cell CLL/Lymphoma 3 (BCL3 Products)
Background:	BCL3, BCL4, B-Cell Lymphoma 3-Encoded Protein, B-Cell Lymphoma 3-Encoded Protein, Chronic Lymphatic Leukemia Protein, Proto-oncogene BCL3
Pathways:	NF-kappaB Signaling , Maintenance of Protein Location , Protein targeting to Nucleus

Application Details

Application Notes:	Western blotting: 0.5-2 µg/mL Immunohistochemistry: 5-20 µg/mL Immunocytochemistry: 5-20 µg/mL Optimal working dilutions must be determined by end user.
Comment:	The thermal stability is described by the loss rate. The loss rate was determined by accelerated thermal degradation test, that is, incubate the protein at 37°C for 48h, and no obvious degradation and precipitation were observed. The loss rate is less than 5% within the expiration date under appropriate storage condition.
Restrictions:	For Research Use only

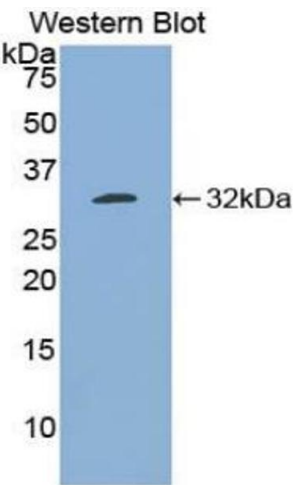
Handling

Format:	Liquid
Buffer:	PBS, pH 7.4, containing 0.02 % Sodium azide, 50 % glycerol.
Preservative:	Sodium azide
Precaution of Use:	This product contains Sodium azide: a POISONOUS AND HAZARDOUS SUBSTANCE which should be handled by trained staff only.
Storage:	4 °C, -20 °C
Storage Comment:	Store at 4°C for frequent use. Stored at -20°C in a manual defrost freezer for two year without detectable loss of activity. Avoid repeated freeze-thaw cycles.
Expiry Date:	24 months



Immunohistochemistry

Image 1. #VALUE!



Western Blotting

Image 2. Detection of Recombinant Bcl3, Mouse using Polyclonal Antibody to B-Cell CLL/Lymphoma 3 (Bcl3)