

Datasheet for ABIN7441919
anti-CLEC4C antibody (AA 5-152)[Go to Product page](#)

5 Images

Overview

Quantity:	100 µL
Target:	CLEC4C
Binding Specificity:	AA 5-152
Reactivity:	Human
Host:	Rabbit
Clonality:	Polyclonal
Conjugate:	This CLEC4C antibody is un-conjugated
Application:	Immunohistochemistry (IHC), Immunocytochemistry (ICC), Immunoprecipitation (IP), Western Blotting (WB)

Product Details

Purpose:	Polyclonal Antibody to C-Type Lectin Domain Family 4, Member C (CLEC4C)
Immunogen:	Recombinant C-Type Lectin Domain Family 4, Member C (CLEC4C) corresponding to Glu5~Ile152 with N-terminal His Tag
Isotype:	IgG
Specificity:	The antibody is a rabbit polyclonal antibody raised against CLEC4C. It has been selected for its ability to recognize CLEC4C in immunohistochemical staining and western blotting.
Purification:	Antigen-specific affinity chromatography followed by Protein A affinity chromatography

Target Details

Target:	CLEC4C
---------	--------

Target Details

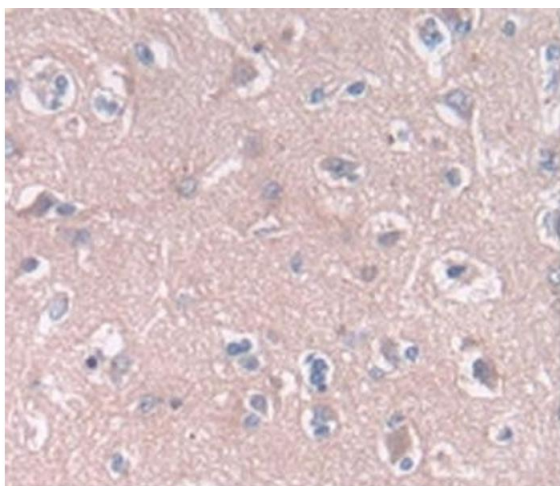
Alternative Name:	C-Type Lectin Domain Family 4, Member C (CLEC4C Products)
Background:	CD303, CLECSF11, CLECSF7, HECL, DLEC, BDCA2, Blood dendritic cell antigen 2, C-type lectin superfamily member 7, Dendritic lectin

Application Details

Application Notes:	Western blotting: 0.5-2 µg/mL Immunohistochemistry: 5-20 µg/mL Immunocytochemistry: 5-20 µg/mL Optimal working dilutions must be determined by end user.
Comment:	The thermal stability is described by the loss rate. The loss rate was determined by accelerated thermal degradation test, that is, incubate the protein at 37°C for 48h, and no obvious degradation and precipitation were observed. The loss rate is less than 5% within the expiration date under appropriate storage condition.
Restrictions:	For Research Use only

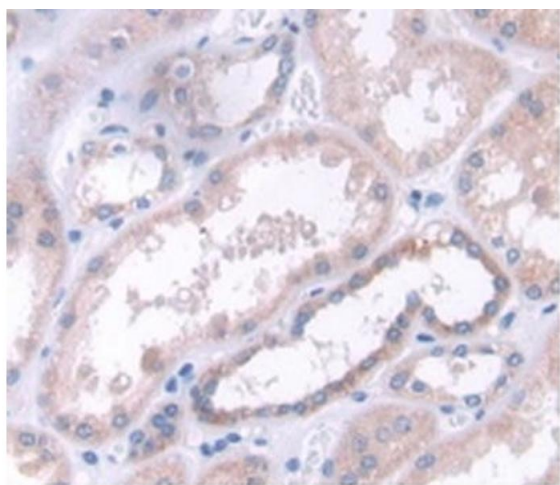
Handling

Format:	Liquid
Buffer:	PBS, pH 7.4, containing 0.02 % Sodium azide, 50 % glycerol.
Preservative:	Sodium azide
Precaution of Use:	This product contains Sodium azide: a POISONOUS AND HAZARDOUS SUBSTANCE which should be handled by trained staff only.
Storage:	4 °C, -20 °C
Storage Comment:	Store at 4°C for frequent use. Stored at -20°C in a manual defrost freezer for two year without detectable loss of activity. Avoid repeated freeze-thaw cycles.
Expiry Date:	24 months



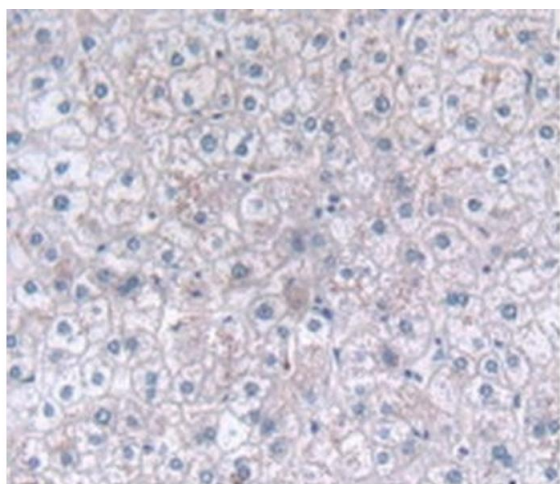
Immunohistochemistry

Image 1. Detection of CLEC4C in Human Brain Tissue using Polyclonal Antibody to C-Type Lectin Domain Family 4, Member C (CLEC4C)



Immunohistochemistry

Image 2. Detection of CLEC4C in Human Kidney Tissue using Polyclonal Antibody to C-Type Lectin Domain Family 4, Member C (CLEC4C)



Immunohistochemistry

Image 3. Detection of CLEC4C in Human Liver Tissue using Polyclonal Antibody to C-Type Lectin Domain Family 4, Member C (CLEC4C)

Please check the [product details page](#) for more images. Overall 5 images are available for ABIN7441919.