



[Go to Product page](#)

Datasheet for ABIN7441922

## anti-Cofilin 2 antibody (AA 1-156)

### 2 Images

#### Overview

Quantity:	100 µL
Target:	Cofilin 2 (CFL2)
Binding Specificity:	AA 1-156
Reactivity:	Human
Host:	Rabbit
Clonality:	Polyclonal
Conjugate:	This Cofilin 2 antibody is un-conjugated
Application:	Western Blotting (WB), ELISA, Immunohistochemistry (Paraffin-embedded Sections) (IHC (p)), Immunocytochemistry (ICC), Immunohistochemistry (Frozen Sections) (IHC (fro))

#### Product Details

Purpose:	Polyclonal Antibody to Cofilin 2, Muscle (CFL2)
Immunogen:	Recombinant Cofilin 2, Muscle (CFL2) corresponding to Met1~Asn156 (Accession # Q9Y281)
Isotype:	IgG
Specificity:	The antibody is a rabbit polyclonal antibody raised against CFL2. It has been selected for its ability to recognize CFL2 in immunohistochemical staining and western blotting.
Cross-Reactivity:	Mouse, Pig
Purification:	Antigen-specific affinity chromatography followed by Protein A affinity chromatography

## Target Details

---

Target:	Cofilin 2 (CFL2)
Alternative Name:	Cofilin 2, Muscle ( <a href="#">CFL2 Products</a> )
Pathways:	<a href="#">Caspase Cascade in Apoptosis</a>

## Application Details

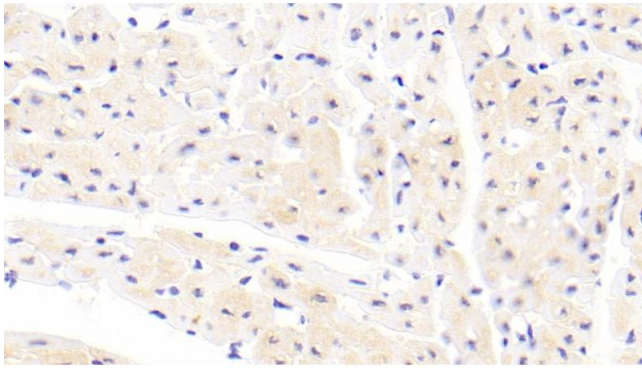
---

Application Notes:	Western blotting: 1-5 µg/mL Immunocytochemistry in formalin fixed cells: 5-20 µg/mL Immunohistochemistry in formalin fixed frozen section: 5-20 µg/mL Immunohistochemistry in paraffin section: 5-20 µg/mL Enzyme-linked Immunosorbent Assay: 0.05-2 µg/mL Optimal working dilutions must be determined by end user.
Comment:	The thermal stability is described by the loss rate. The loss rate was determined by accelerated thermal degradation test, that is, incubate the protein at 37°C for 48h, and no obvious degradation and precipitation were observed. The loss rate is less than 5% within the expiration date under appropriate storage condition.
Restrictions:	For Research Use only

## Handling

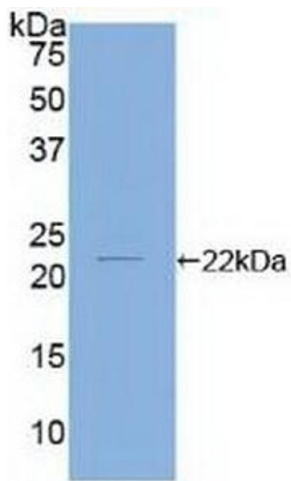
---

Format:	Liquid
Buffer:	0.01M PBS, pH 7.4, containing 0.05 % Proclin-300, 50 % glycerol.
Preservative:	ProClin
Precaution of Use:	This product contains ProClin: a POISONOUS AND HAZARDOUS SUBSTANCE which should be handled by trained staff only.
Storage:	4 °C,-20 °C
Storage Comment:	Store at 4°C for frequent use. Stored at -20°C in a manual defrost freezer for two year without detectable loss of activity. Avoid repeated freeze-thaw cycles.
Expiry Date:	24 months



### Immunohistochemistry

**Image 1.** Detection of CFL2 in Human Cardiac Muscle Tissue using Polyclonal Antibody to Cofilin 2, Muscle (CFL2)



### Western Blotting

**Image 2.** Detection of Recombinant CFL2, Human using Polyclonal Antibody to Cofilin 2, Muscle (CFL2)