

Datasheet for ABIN7441949
anti-SMAD6 antibody (AA 261-495)

3 Images

[Go to Product page](#)

Overview

Quantity:	100 µL
Target:	SMAD6
Binding Specificity:	AA 261-495
Reactivity:	Human
Host:	Rabbit
Clonality:	Polyclonal
Conjugate:	This SMAD6 antibody is un-conjugated
Application:	Western Blotting (WB), Immunohistochemistry (IHC), Immunoprecipitation (IP), Immunocytochemistry (ICC)

Product Details

Purpose:	Polyclonal Antibody to SMAD family member 6 (SMAD6)
Immunogen:	Recombinant SMAD family member 6 (SMAD6) corresponding to Cys261~Pro495 (Accession # O43541)
Isotype:	IgG
Specificity:	The antibody is a rabbit polyclonal antibody raised against SMAD6. It has been selected for its ability to recognize SMAD6 in immunohistochemical staining and western blotting.
Cross-Reactivity:	Mouse, Rat
Purification:	Antigen-specific affinity chromatography followed by Protein A affinity chromatography

Target Details

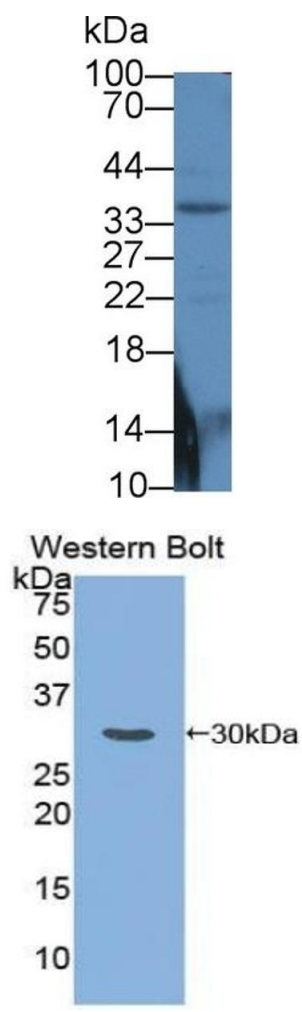
Target:	SMAD6
Alternative Name:	SMAD family member 6 (SMAD6 Products)
Background:	MADH6, MADH7, Mothers Against Decapentaplegic Homolog 6
Pathways:	Chromatin Binding

Application Details

Application Notes:	Western blotting: 0.5-2 µg/mL 1:160-600 Immunohistochemistry: 5-20 µg/mL 1:16-60 Immunocytochemistry: 5-20 µg/mL 1:16-60 Optimal working dilutions must be determined by end user.
Comment:	The thermal stability is described by the loss rate. The loss rate was determined by accelerated thermal degradation test, that is, incubate the protein at 37°C for 48h, and no obvious degradation and precipitation were observed. The loss rate is less than 5% within the expiration date under appropriate storage condition.
Restrictions:	For Research Use only

Handling

Format:	Liquid
Buffer:	0.01M PBS, pH 7.4, containing 0.05 % Proclin-300, 50 % glycerol.
Preservative:	ProClin
Precaution of Use:	This product contains ProClin: a POISONOUS AND HAZARDOUS SUBSTANCE which should be handled by trained staff only.
Storage:	4 °C,-20 °C
Storage Comment:	Store at 4°C for frequent use. Stored at -20°C in a manual defrost freezer for two year without detectable loss of activity. Avoid repeated freeze-thaw cycles.
Expiry Date:	24 months

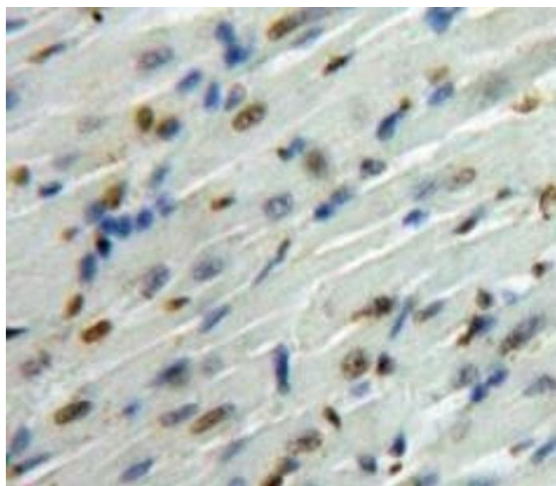


Western Blotting

Image 1. Detection of SMAD6 in ouse Pancreas lysate using Polyclonal Antibody to SMAD family member 6 (SMAD6)

Western Blotting

Image 2. Detection of Recombinant Smad6, Human using Polyclonal Antibody to SMAD family member 6 (SMAD6)



Immunohistochemistry

Image 3. #VALUE!