

Datasheet for ABIN7441961
anti-CPB1 antibody (AA 111-417)

9 Images

[Go to Product page](#)

Overview

Quantity:	100 µL
Target:	CPB1
Binding Specificity:	AA 111-417
Reactivity:	Human
Host:	Rabbit
Clonality:	Polyclonal
Conjugate:	This CPB1 antibody is un-conjugated
Application:	Western Blotting (WB), Immunohistochemistry (IHC), Immunoprecipitation (IP), Immunocytochemistry (ICC)

Product Details

Purpose:	Polyclonal Antibody to Carboxypeptidase B1, Tissue (CPB1)
Immunogen:	Recombinant Carboxypeptidase B1, Tissue (CPB1) corresponding to Ala111~Tyr417 (Accession # P15086)
Isotype:	IgG
Specificity:	The antibody is a rabbit polyclonal antibody raised against CPB1. It has been selected for its ability to recognize CPB1 in immunohistochemical staining and western blotting.
Cross-Reactivity:	Mouse, Rat
Purification:	Antigen-specific affinity chromatography followed by Protein A affinity chromatography

Target Details

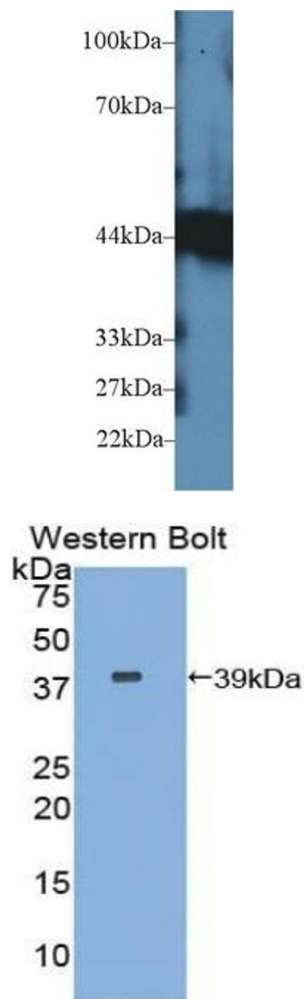
Target:	CPB1
Alternative Name:	Carboxypeptidase B1, Tissue (CPB1 Products)
Background:	CPB, PCPB, PASP, Pancreas-specific protein

Application Details

Application Notes:	Western blotting: 0.5-2 µg/mL Immunohistochemistry: 5-20 µg/mL Immunocytochemistry: 5-20 µg/mL Optimal working dilutions must be determined by end user.
Comment:	The thermal stability is described by the loss rate. The loss rate was determined by accelerated thermal degradation test, that is, incubate the protein at 37°C for 48h, and no obvious degradation and precipitation were observed. The loss rate is less than 5% within the expiration date under appropriate storage condition.
Restrictions:	For Research Use only

Handling

Format:	Liquid
Buffer:	PBS, pH 7.4, containing 0.02 % Sodium azide, 50 % glycerol.
Preservative:	Sodium azide
Precaution of Use:	This product contains Sodium azide: a POISONOUS AND HAZARDOUS SUBSTANCE which should be handled by trained staff only.
Storage:	4 °C,-20 °C
Storage Comment:	Store at 4°C for frequent use. Stored at -20°C in a manual defrost freezer for two year without detectable loss of activity. Avoid repeated freeze-thaw cycles.
Expiry Date:	24 months

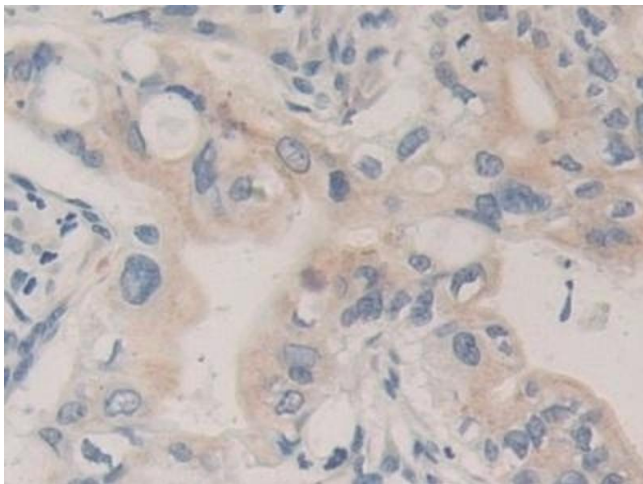


Western Blotting

Image 1. Detection of CPB1 in Mouse Pancreas lysate using Polyclonal Antibody to Carboxypeptidase B1, Tissue (CPB1)

Western Blotting

Image 2. Detection of Recombinant CPB1, Human using Polyclonal Antibody to Carboxypeptidase B1, Tissue (CPB1)



Immunohistochemistry

Image 3. Detection of CPB1 in Human Bile duct cancer Tissue using Polyclonal Antibody to Carboxypeptidase B1, Tissue (CPB1)

Please check the [product details page](#) for more images. Overall 9 images are available for ABIN7441961.