



[Go to Product page](#)

Datasheet for ABIN7442009
anti-BCAM antibody (AA 32-257)

6 Images

Overview

Quantity:	100 µL
Target:	BCAM
Binding Specificity:	AA 32-257
Reactivity:	Human
Host:	Rabbit
Clonality:	Polyclonal
Conjugate:	This BCAM antibody is un-conjugated
Application:	Western Blotting (WB), Immunohistochemistry (IHC), Immunocytochemistry (ICC), Immunoprecipitation (IP)

Product Details

Purpose:	Polyclonal Antibody to Basal Cell Adhesion Molecule (BCAM)
Immunogen:	Recombinant Basal Cell Adhesion Molecule (BCAM) corresponding to Glu32~His257
Isotype:	IgG
Specificity:	The antibody is a rabbit polyclonal antibody raised against BCAM. It has been selected for its ability to recognize BCAM in immunohistochemical staining and western blotting.
Purification:	Antigen-specific affinity chromatography followed by Protein A affinity chromatography

Target Details

Target:	BCAM
---------	------

Target Details

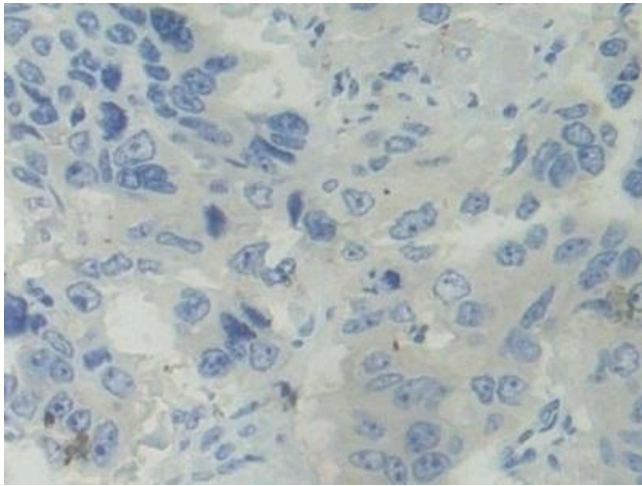
Alternative Name:	Basal Cell Adhesion Molecule (BCAM Products)
Background:	CD239, BCAM, AU, LU, MSK19, Lutheran Blood Group Glycoprotein, Auberger B antigen, B-CAM cell surface glycoprotein, F8/G253 antigen

Application Details

Application Notes:	Western blotting: 0.5-5 µg/mL Immunohistochemistry: 5-50 µg/mL Immunocytochemistry: 5-50 µg/mL Optimal working dilutions must be determined by end user.
Comment:	The thermal stability is described by the loss rate. The loss rate was determined by accelerated thermal degradation test, that is, incubate the protein at 37°C for 48h, and no obvious degradation and precipitation were observed. The loss rate is less than 5% within the expiration date under appropriate storage condition.
Restrictions:	For Research Use only

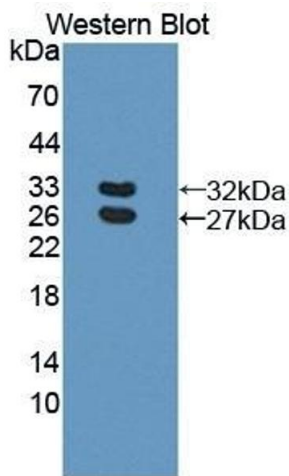
Handling

Format:	Liquid
Buffer:	PBS, pH 7.4, containing 0.02 % Sodium azide, 50 % glycerol.
Preservative:	Sodium azide
Precaution of Use:	This product contains Sodium azide: a POISONOUS AND HAZARDOUS SUBSTANCE which should be handled by trained staff only.
Storage:	4 °C,-20 °C
Storage Comment:	Store at 4°C for frequent use. Stored at -20°C in a manual defrost freezer for two year without detectable loss of activity. Avoid repeated freeze-thaw cycles.
Expiry Date:	24 months



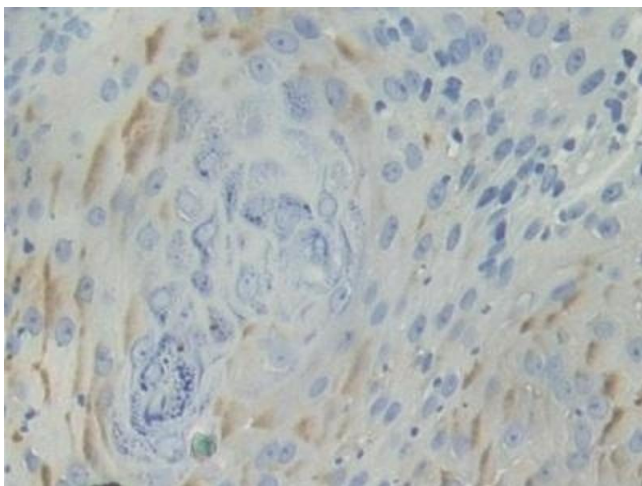
Immunohistochemistry

Image 1. Detection of BCAM in Human Breast cancer Tissue using Polyclonal Antibody to Basal Cell Adhesion Molecule (BCAM)



Western Blotting

Image 2. Detection of Recombinant BCAM, Human using Polyclonal Antibody to Basal Cell Adhesion Molecule (BCAM)



Immunohistochemistry

Image 3. Detection of BCAM in Human Skin cancer Tissue using Polyclonal Antibody to Basal Cell Adhesion Molecule (BCAM)

Please check the [product details page](#) for more images. Overall 6 images are available for ABIN7442009.