



Datasheet for ABIN7442024
anti-MBP antibody (AA 135-190)



[Go to Product page](#)

4 Images

Overview

Quantity:	100 µL
Target:	MBP
Binding Specificity:	AA 135-190
Reactivity:	Human
Host:	Rabbit
Clonality:	Polyclonal
Conjugate:	This MBP antibody is un-conjugated
Application:	Western Blotting (WB), Immunohistochemistry (IHC), Immunoprecipitation (IP), Immunocytochemistry (ICC)

Product Details

Purpose:	Polyclonal Antibody to Myelin Basic Protein (MBP)
Immunogen:	Recombinant Myelin Basic Protein (MBP) corresponding to Ala135~Ser190 with N-terminal His and GST Tag
Isotype:	IgG
Specificity:	The antibody is a rabbit polyclonal antibody raised against MBP. It has been selected for its ability to recognize MBP in immunohistochemical staining and western blotting.
Cross-Reactivity:	Mouse, Pig, Rat
Purification:	Antigen-specific affinity chromatography followed by Protein A affinity chromatography

Target Details

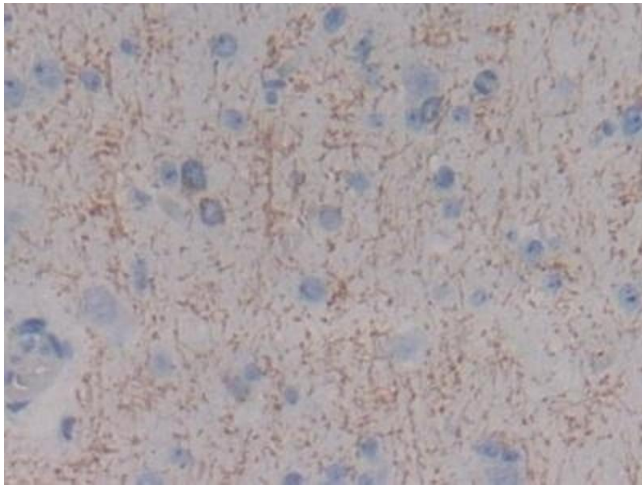
Target:	MBP
Alternative Name:	Myelin Basic Protein (MBP Products)
Background:	Myelin A1 protein, Myelin membrane encephalitogenic protein

Application Details

Application Notes:	Western blotting: 0.5-2 µg/mL Immunohistochemistry: 5-20 µg/mL Immunocytochemistry: 5-20 µg/mL Optimal working dilutions must be determined by end user.
Comment:	The thermal stability is described by the loss rate. The loss rate was determined by accelerated thermal degradation test, that is, incubate the protein at 37°C for 48h, and no obvious degradation and precipitation were observed. The loss rate is less than 5% within the expiration date under appropriate storage condition.
Restrictions:	For Research Use only

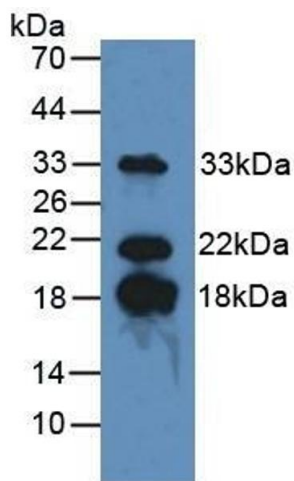
Handling

Format:	Liquid
Buffer:	0.01M PBS, pH 7.4, containing 0.05 % Proclin-300, 50 % glycerol.
Preservative:	ProClin
Precaution of Use:	This product contains ProClin: a POISONOUS AND HAZARDOUS SUBSTANCE which should be handled by trained staff only.
Storage:	4 °C,-20 °C
Storage Comment:	Store at 4°C for frequent use. Stored at -20°C in a manual defrost freezer for two year without detectable loss of activity. Avoid repeated freeze-thaw cycles.
Expiry Date:	24 months



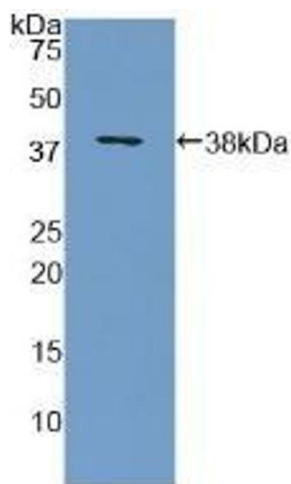
Immunohistochemistry

Image 1. Detection of MBP in Human Cerebrum Tissue using Polyclonal Antibody to Myelin Basic Protein (MBP)



Western Blotting

Image 2. Detection of MBP in Mouse Brain Tissue using Polyclonal Antibody to Myelin Basic Protein (MBP)



Western Blotting

Image 3. Detection of Recombinant MBP, Human using Polyclonal Antibody to Myelin Basic Protein (MBP)

Please check the [product details page](#) for more images. Overall 4 images are available for ABIN7442024.