

Datasheet for ABIN7442042
anti-IFI16 antibody (AA 465-671)[Go to Product page](#)

7 Images

Overview

Quantity:	100 µL
Target:	IFI16
Binding Specificity:	AA 465-671
Reactivity:	Human
Host:	Rabbit
Clonality:	Polyclonal
Conjugate:	This IFI16 antibody is un-conjugated
Application:	Western Blotting (WB), Immunohistochemistry (IHC), Immunoprecipitation (IP), Immunocytochemistry (ICC)

Product Details

Purpose:	Polyclonal Antibody to Interferon Gamma Inducible Protein 16 (IFI16)
Immunogen:	Recombinant Interferon Gamma Inducible Protein 16 (IFI16) corresponding to Ser465~Cys671 with N-terminal His Tag
Isotype:	IgG
Specificity:	The antibody is a rabbit polyclonal antibody raised against IFI16. It has been selected for its ability to recognize IFI16 in immunohistochemical staining and western blotting.
Purification:	Antigen-specific affinity chromatography followed by Protein A affinity chromatography

Target Details

Target:	IFI16
---------	-------

Target Details

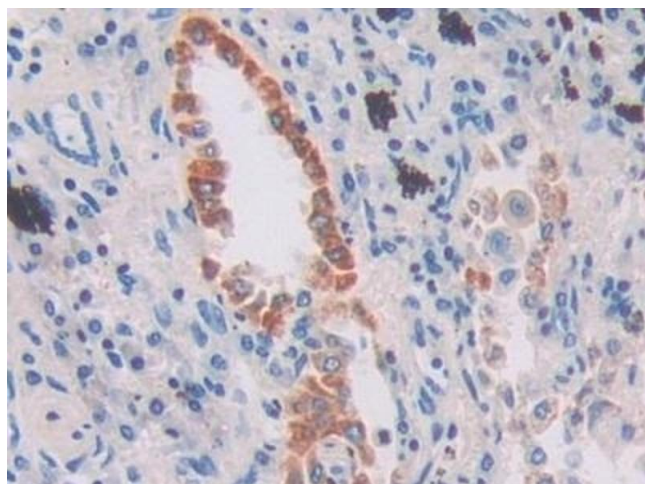
Alternative Name:	Interferon Gamma Inducible Protein 16 (IFI16 Products)
Background:	IFI16, IFNGIP1, PYHIN2, Interferon-inducible myeloid differentiation transcriptional activator
Pathways:	Activation of Innate immune Response , Positive Regulation of Endopeptidase Activity , Autophagy , Inflammasome

Application Details

Application Notes:	Western blotting: 1-5 µg/mL Immunocytochemistry in formalin fixed cells: 5-20 µg/mL Immunohistochemistry in formalin fixed frozen section: 5-20 µg/mL Immunohistochemistry in paraffin section: 5-20 µg/mL Enzyme-linked Immunosorbent Assay: 0.05-2 µg/mL Optimal working dilutions must be determined by end user.
Comment:	The thermal stability is described by the loss rate. The loss rate was determined by accelerated thermal degradation test, that is, incubate the protein at 37°C for 48h, and no obvious degradation and precipitation were observed. The loss rate is less than 5% within the expiration date under appropriate storage condition.
Restrictions:	For Research Use only

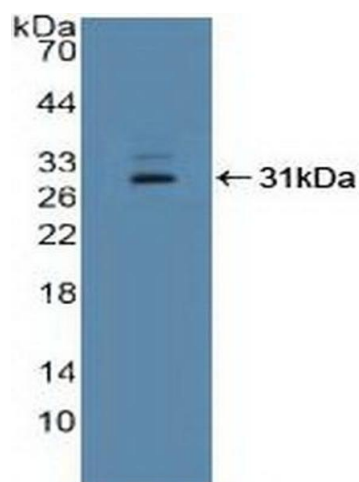
Handling

Format:	Liquid
Buffer:	0.01M PBS, pH 7.4, containing 0.05 % Proclin-300, 50 % glycerol.
Preservative:	ProClin
Precaution of Use:	This product contains ProClin: a POISONOUS AND HAZARDOUS SUBSTANCE which should be handled by trained staff only.
Storage:	4 °C, -20 °C
Storage Comment:	Store at 4°C for frequent use. Stored at -20°C in a manual defrost freezer for two year without detectable loss of activity. Avoid repeated freeze-thaw cycles.
Expiry Date:	24 months



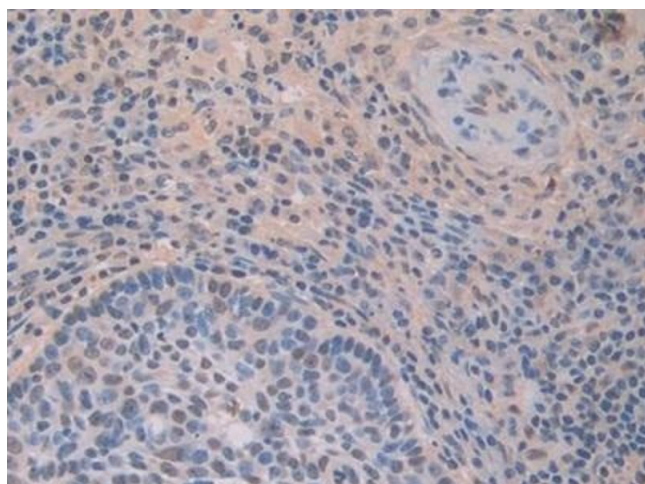
Immunohistochemistry

Image 1. Detection of IFI16 in Human Lung cancer Tissue using Polyclonal Antibody to Interferon Gamma Inducible Protein 16 (IFI16)



Western Blotting

Image 2. Detection of Recombinant IFI16, Human using Polyclonal Antibody to Interferon Gamma Inducible Protein 16 (IFI16)



Immunohistochemistry

Image 3. Detection of IFI16 in Human Skin cancer Tissue using Polyclonal Antibody to Interferon Gamma Inducible Protein 16 (IFI16)

Please check the [product details page](#) for more images. Overall 7 images are available for ABIN7442042.