

Datasheet for ABIN7442093  
**anti-MAP6 antibody (AA 177-387)**

## 3 Images

[Go to Product page](#)

## Overview

Quantity:	100 µL
Target:	MAP6
Binding Specificity:	AA 177-387
Reactivity:	Mouse
Host:	Rabbit
Clonality:	Polyclonal
Conjugate:	This MAP6 antibody is un-conjugated
Application:	Western Blotting (WB), Immunohistochemistry (IHC), Immunoprecipitation (IP), Immunocytochemistry (ICC)

## Product Details

Purpose:	Polyclonal Antibody to Microtubule Associated Protein 6 (MAP6)
Immunogen:	Recombinant Microtubule Associated Protein 6 (MAP6) corresponding to Gln177~Glu387 (Accession # Q7TSJ2)
Isotype:	IgG
Specificity:	The antibody is a rabbit polyclonal antibody raised against MAP6. It has been selected for its ability to recognize MAP6 in immunohistochemical staining and western blotting.
Purification:	Antigen-specific affinity chromatography followed by Protein A affinity chromatography

## Target Details

Target:	MAP6
---------	------

## Target Details

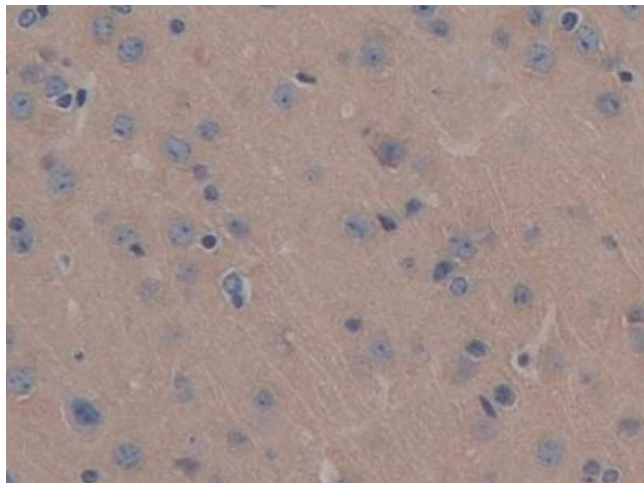
Alternative Name:	Microtubule Associated Protein 6 ( <a href="#">MAP6 Products</a> )
Background:	MTAP6, N-STOP, STOP, Stable tubule-only polypeptide

## Application Details

Application Notes:	Western blotting: 0.5-2 µg/mL Immunohistochemistry: 5-20 µg/mL Immunocytochemistry: 5-20 µg/mL Optimal working dilutions must be determined by end user.
Comment:	The thermal stability is described by the loss rate. The loss rate was determined by accelerated thermal degradation test, that is, incubate the protein at 37°C for 48h, and no obvious degradation and precipitation were observed. The loss rate is less than 5% within the expiration date under appropriate storage condition.
Restrictions:	For Research Use only

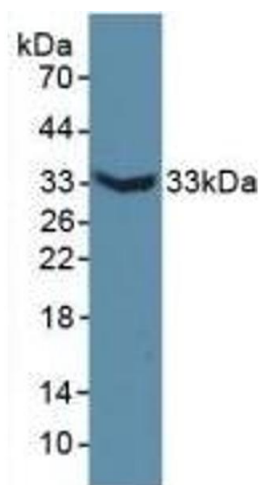
## Handling

Format:	Liquid
Buffer:	0.01M PBS, pH 7.4, containing 0.05 % Proclin-300, 50 % glycerol.
Preservative:	ProClin
Precaution of Use:	This product contains ProClin: a POISONOUS AND HAZARDOUS SUBSTANCE which should be handled by trained staff only.
Storage:	4 °C,-20 °C
Storage Comment:	Store at 4°C for frequent use. Stored at -20°C in a manual defrost freezer for two year without detectable loss of activity. Avoid repeated freeze-thaw cycles.
Expiry Date:	24 months



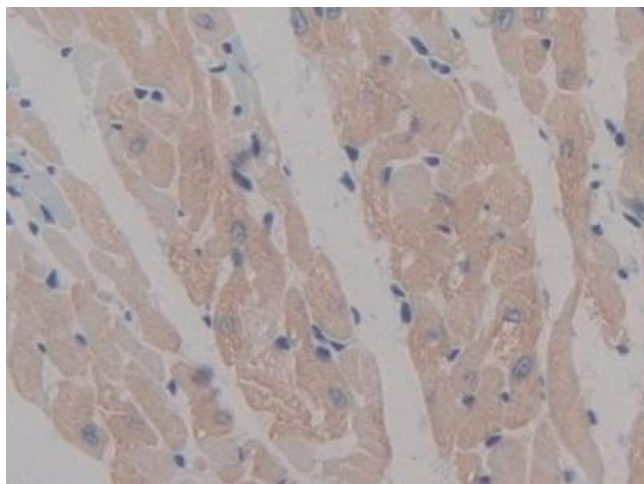
#### Immunohistochemistry

**Image 1.** Detection of MAP6 in Mouse Brain Tissue using Polyclonal Antibody to Microtubule Associated Protein 6 (MAP6)



#### Western Blotting

**Image 2.** Detection of Recombinant MAP6, Mouse using Polyclonal Antibody to Microtubule Associated Protein 6 (MAP6)



#### Immunohistochemistry

**Image 3.** Detection of MAP6 in Mouse Heart Tissue using Polyclonal Antibody to Microtubule Associated Protein 6 (MAP6)