

Datasheet for ABIN7442108  
**anti-Corin antibody (AA 134-573)**

## 5 Images

[Go to Product page](#)

## Overview

Quantity:	100 µL
Target:	Corin (CORIN)
Binding Specificity:	AA 134-573
Reactivity:	Human
Host:	Rabbit
Clonality:	Polyclonal
Conjugate:	This Corin antibody is un-conjugated
Application:	Western Blotting (WB), Immunohistochemistry (IHC), Immunoprecipitation (IP), Immunocytochemistry (ICC)

## Product Details

Purpose:	Polyclonal Antibody to Corin (CRN)
Immunogen:	Recombinant Corin (CRN) corresponding to Arg134~Pro573 with N-terminal His Tag
Isotype:	IgG
Specificity:	The antibody is a rabbit polyclonal antibody raised against CRN. It has been selected for its ability to recognize CRN in immunohistochemical staining and western blotting.
Purification:	Antigen-specific affinity chromatography followed by Protein A affinity chromatography

## Target Details

Target:	Corin (CORIN)
---------	---------------

## Target Details

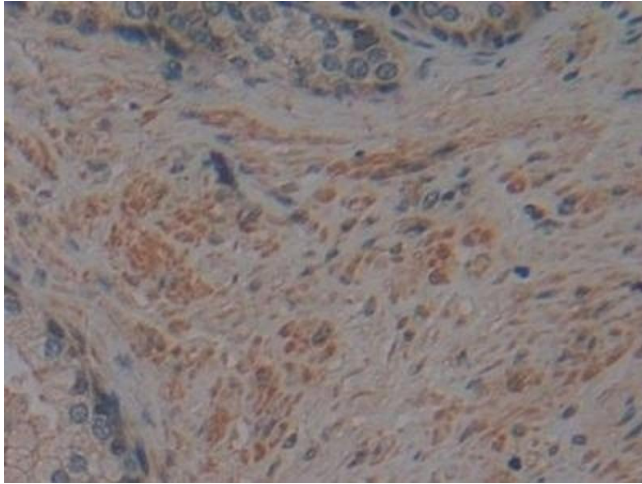
Alternative Name:	Corin ( <a href="#">CORIN Products</a> )
Background:	ATC2, CRN, Lrp4, TMPRSS10, Atrial Natriuretic Peptide-Converting Enzyme, Serine Protease, Heart-specific serine proteinase ATC2, Pro-ANP-converting enzyme
Pathways:	<a href="#">Regulation of Systemic Arterial Blood Pressure by Hormones</a>

## Application Details

Application Notes:	Western blotting: 0.5-2 µg/mL Immunocytochemistry in formalin fixed cells: 5-20 µg/mL Immunohistochemistry in formalin fixed frozen section: 5-20 µg/mL Immunohistochemistry in paraffin section: 5-20 µg/mL Enzyme-linked Immunosorbent Assay: 0.05-2 µg/mL Optimal working dilutions must be determined by end user.
Comment:	The thermal stability is described by the loss rate. The loss rate was determined by accelerated thermal degradation test, that is, incubate the protein at 37°C for 48h, and no obvious degradation and precipitation were observed. The loss rate is less than 5% within the expiration date under appropriate storage condition.
Restrictions:	For Research Use only

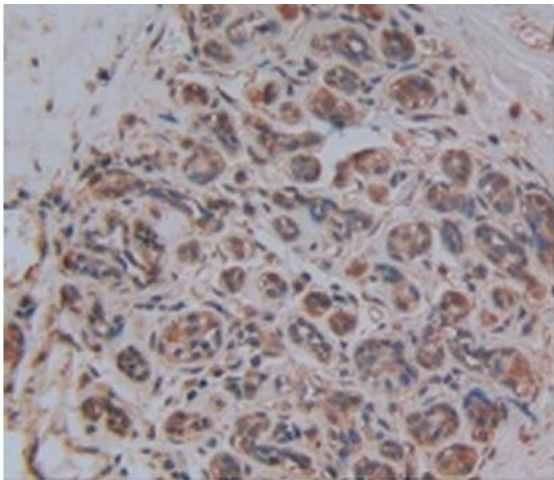
## Handling

Format:	Liquid
Buffer:	PBS, pH 7.4, containing 0.02 % Sodium azide, 50 % glycerol.
Preservative:	Sodium azide
Precaution of Use:	This product contains Sodium azide: a POISONOUS AND HAZARDOUS SUBSTANCE which should be handled by trained staff only.
Storage:	4 °C, -20 °C
Storage Comment:	Store at 4°C for frequent use. Stored at -20°C in a manual defrost freezer for two year without detectable loss of activity. Avoid repeated freeze-thaw cycles.
Expiry Date:	24 months



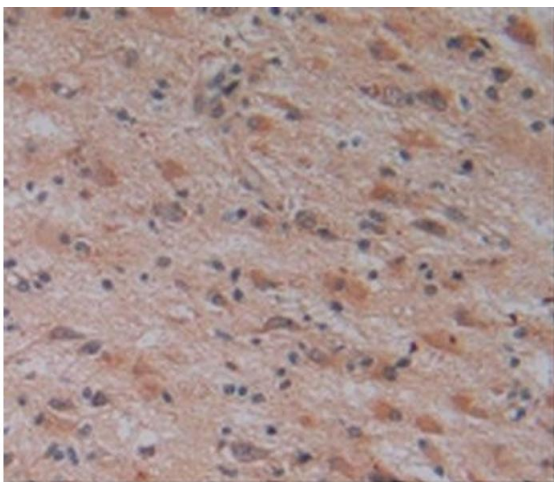
#### Immunohistochemistry

**Image 1.** Detection of CRN in Human Prostate Tissue using Polyclonal Antibody to Corin (CRN)



#### Immunohistochemistry

**Image 2.** Detection of CRN in Human Breast Cancer Tissue using Polyclonal Antibody to Corin (CRN)



#### Immunohistochemistry

**Image 3.** Detection of CRN in Human Glioma Tissue using Polyclonal Antibody to Corin (CRN)

Please check the [product details page](#) for more images. Overall 5 images are available for ABIN7442108.