

Datasheet for ABIN7442168  
**anti-PSMD13 antibody (AA 1-378)**

## 4 Images

[Go to Product page](#)

## Overview

Quantity:	100 µL
Target:	PSMD13
Binding Specificity:	AA 1-378
Reactivity:	Human
Host:	Rabbit
Clonality:	Polyclonal
Conjugate:	This PSMD13 antibody is un-conjugated
Application:	Western Blotting (WB), ELISA, Immunohistochemistry (Paraffin-embedded Sections) (IHC (p)), Immunocytochemistry (ICC), Immunohistochemistry (Frozen Sections) (IHC (fro))

## Product Details

Purpose:	Polyclonal Antibody to Proteasome 26S Subunit, Non ATPase 13 (PSMD13)
Immunogen:	Recombinant Proteasome 26S Subunit, Non ATPase 13 (PSMD13) corresponding to Met1~Thr378 (Accession # Q9UNM6)
Isotype:	IgG
Specificity:	The antibody is a rabbit polyclonal antibody raised against PSMD13. It has been selected for its ability to recognize PSMD13 in immunohistochemical staining and western blotting.
Purification:	Antigen-specific affinity chromatography followed by Protein A affinity chromatography

## Target Details

Target:	PSMD13
---------	--------

## Target Details

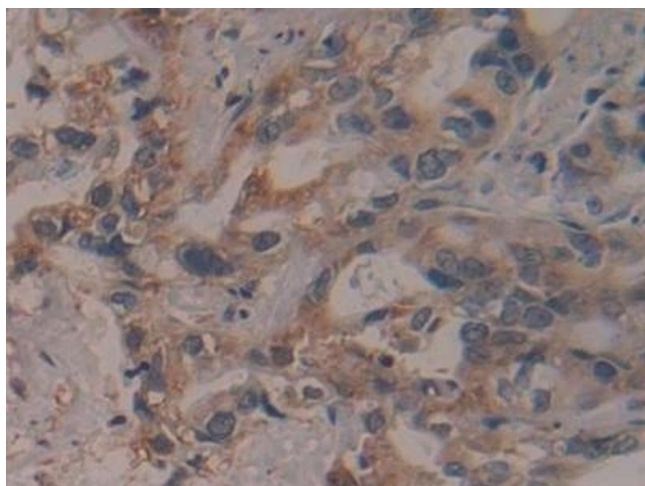
Alternative Name:	Proteasome 26S Subunit, Non ATPase 13 ( <a href="#">PSMD13 Products</a> )
Background:	P40.5, Rpn9, 26S proteasome non-ATPase regulatory subunit 13, 26S proteasome regulatory subunit RPN9
Pathways:	<a href="#">Mitotic G1-G1/S Phases</a> , <a href="#">DNA Replication</a> , <a href="#">Synthesis of DNA</a> , <a href="#">Ubiquitin Proteasome Pathway</a>

## Application Details

Application Notes:	Western blotting: 1-5 µg/mL Immunocytochemistry in formalin fixed cells: 5-20 µg/mL Immunohistochemistry in formalin fixed frozen section: 5-20 µg/mL Immunohistochemistry in paraffin section: 5-20 µg/mL Enzyme-linked Immunosorbent Assay: 0.05-2 µg/mL Optimal working dilutions must be determined by end user.
Comment:	The thermal stability is described by the loss rate. The loss rate was determined by accelerated thermal degradation test, that is, incubate the protein at 37°C for 48h, and no obvious degradation and precipitation were observed. The loss rate is less than 5% within the expiration date under appropriate storage condition.
Restrictions:	For Research Use only

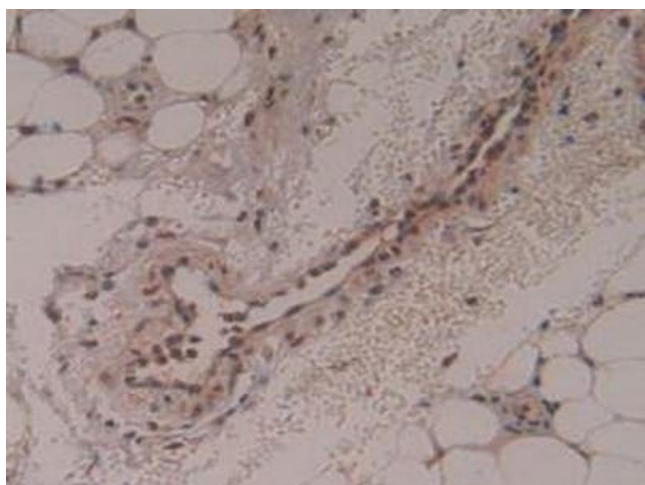
## Handling

Format:	Liquid
Buffer:	0.01M PBS, pH 7.4, containing 0.05 % Proclin-300, 50 % glycerol.
Preservative:	ProClin
Precaution of Use:	This product contains ProClin: a POISONOUS AND HAZARDOUS SUBSTANCE which should be handled by trained staff only.
Storage:	4 °C, -20 °C
Storage Comment:	Store at 4°C for frequent use. Stored at -20°C in a manual defrost freezer for two year without detectable loss of activity. Avoid repeated freeze-thaw cycles.
Expiry Date:	24 months



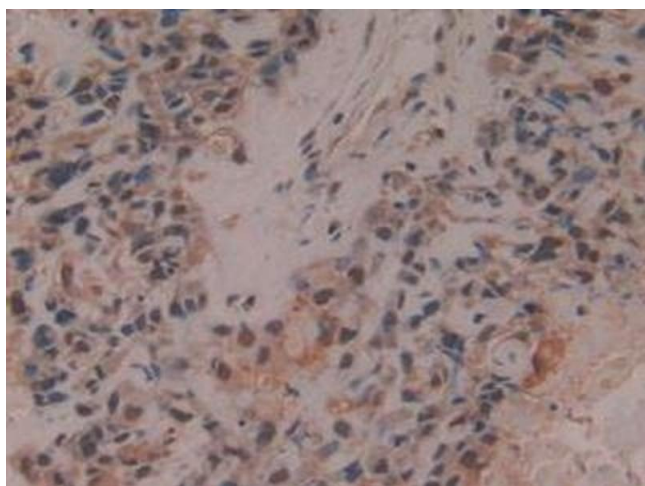
#### Immunohistochemistry

**Image 1.** Detection of PSMD13 in Human Pancreatic cancer Tissue using Polyclonal Antibody to Proteasome 26S Subunit, Non ATPase 13 (PSMD13)



#### Immunohistochemistry

**Image 2.** Detection of PSMD13 in Human Skin Cancer Tissue using Polyclonal Antibody to Proteasome 26S Subunit, Non ATPase 13 (PSMD13)



#### Immunohistochemistry

**Image 3.** Detection of PSMD13 in Human Lung Cancer Tissue using Polyclonal Antibody to Proteasome 26S Subunit, Non ATPase 13 (PSMD13)

Please check the [product details page](#) for more images. Overall 4 images are available for ABIN7442168.