



[Go to Product page](#)

Datasheet for ABIN744218
anti-NDRG1 antibody (pSer330)

1 Image

Overview

Quantity:	100 µL
Target:	NDRG1
Binding Specificity:	pSer330
Reactivity:	Mouse
Host:	Rabbit
Clonality:	Polyclonal
Conjugate:	This NDRG1 antibody is un-conjugated
Application:	Western Blotting (WB), ELISA, Immunohistochemistry (Paraffin-embedded Sections) (IHC (p)), Immunofluorescence (Cultured Cells) (IF (cc)), Immunofluorescence (Paraffin-embedded Sections) (IF (p)), Immunohistochemistry (Frozen Sections) (IHC (fro))

Product Details

Immunogen:	KLH conjugated synthetic phosphopeptide derived from human NDRG1 around the phosphorylation site of Ser330
Isotype:	IgG
Cross-Reactivity:	Mouse
Predicted Reactivity:	Human,Rat,Dog,Cow,Horse,Chicken,Rabbit
Purification:	Purified by Protein A.

Target Details

Target:	NDRG1
---------	-------

Target Details

Alternative Name: NDRG1 ([NDRG1 Products](#))

Background: Synonyms: P-NDRG1 Ser330, N-myc downstream regulated gene 1, TDD5, 42 kDa, cap43, cmt4d, Dferentiation related gene1 protein, Drg 1, drg1, gc4, hmsnl, Human mRNA for RTP complete cds, N myc downstream regulated gene 1 protein, Ndr 1, NDRG 1, Nickel specic induction protein Cap43, Nmyc downstream regulated gene1, Protein NDRG1, Protein regulated by oxygen 1 , Protein regulated by oxygen1, proxy1, reducin, Reducing agents and tunicamycin responsive protein, rit42, rtp, targ1, tdds, tunicamycin-responsive protein, NDRG1_HUMAN.

Background: This gene is a member of the N-myc downregulated gene family which belongs to the alpha/beta hydrolase superfamily. The protein encoded by this gene is a cytoplasmic protein involved in stress responses, hormone responses, cell growth, and differentiation. Mutation in this gene has been reported to be causative for hereditary motor and sensory neuropathy-Lom. May have a growth inhibitory role. Ubiquitous, expressed most prominently in placental membranes and prostate, kidney, small intestine, and ovary tissues. Reduced expression in adenocarcinomas compared to normal tissues. In colon, prostate and placental membranes, the cells that border the lumen show the highest expression.

Gene ID: 10397

Application Details

Application Notes: WB 1:300-5000
ELISA 1:500-1000
IHC-P 1:200-400
IHC-F 1:100-500
IF(IHC-P) 1:50-200
IF(IHC-F) 1:50-200
IF(ICC) 1:50-200

Restrictions: For Research Use only

Handling

Format: Liquid

Concentration: 1 µg/µL

Buffer: 0.01M TBS(pH 7.4) with 1 % BSA, 0.02 % Proclin300 and 50 % Glycerol.

Preservative: ProClin

Handling

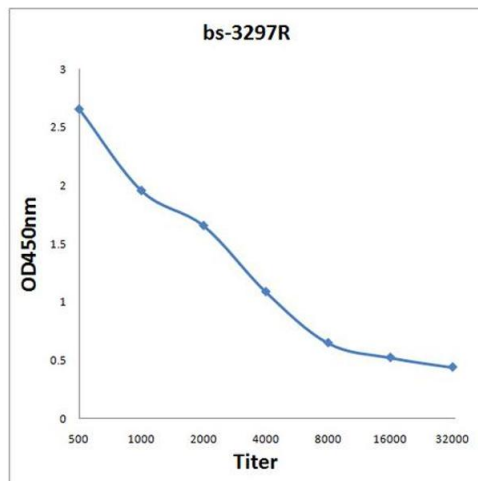
Precaution of Use: This product contains ProClin: a POISONOUS AND HAZARDOUS SUBSTANCE, which should be handled by trained staff only.

Storage: 4 °C, -20 °C

Storage Comment: Shipped at 4°C. Store at -20°C for one year. Avoid repeated freeze/thaw cycles.

Expiry Date: 12 months

Images



ELISA

Image 1. Antigen: 0.2 µg/100 µL Primary: Antiserum, 1:500, 1:1000, 1:2000, 1:4000, 1:8000, 1:16000, 1:32000; Secondary: HRP conjugated Goat Anti-Rabbit IgG at 1: 5000; TMB staining; Read the data in Microplate Reader by 450nm