

Datasheet for ABIN7442246

anti-Complement C3 Convertase antibody

6 Images

[Go to Product page](#)

Overview

Quantity:	100 µL
Target:	Complement C3 Convertase
Reactivity:	Mouse
Host:	Rabbit
Clonality:	Polyclonal
Conjugate:	This Complement C3 Convertase antibody is un-conjugated
Application:	Immunohistochemistry (IHC), Western Blotting (WB), Immunocytochemistry (ICC), Immunoprecipitation (IP)

Product Details

Purpose:	Polyclonal Antibody to Complement C3 Convertase (C3 Convertase)
Immunogen:	Recombinant Complement C3 Convertase (C3 Convertase) corresponding to N-terminal His Tag
Isotype:	IgG
Specificity:	The antibody is a rabbit polyclonal antibody raised against C3 Convertase. It has been selected for its ability to recognize C3 Convertase in immunohistochemical staining and western blotting.
Cross-Reactivity:	Human, Rat
Purification:	Antigen-specific affinity chromatography followed by Protein A affinity chromatography

Target Details

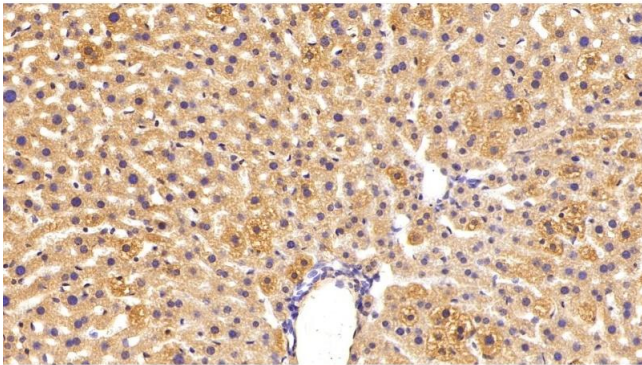
Target:	Complement C3 Convertase
Abstract:	Complement C3 Convertase Products
Background:	C3c, C4b2a, C3bBb, complement C.hivin.4.hivin2

Application Details

Application Notes:	Western blotting: 0.5-2 µg/mL Immunohistochemistry: 5-20 µg/mL Immunocytochemistry: 5-20 µg/mL Optimal working dilutions must be determined by end user.
Comment:	The thermal stability is described by the loss rate. The loss rate was determined by accelerated thermal degradation test, that is, incubate the protein at 37°C for 48h, and no obvious degradation and precipitation were observed. The loss rate is less than 5% within the expiration date under appropriate storage condition.
Restrictions:	For Research Use only

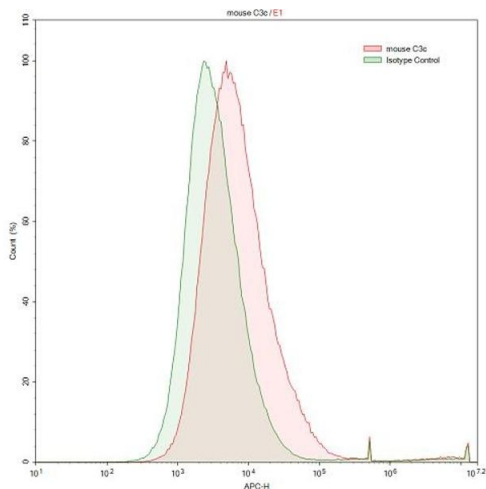
Handling

Format:	Liquid
Buffer:	0.01M PBS, pH 7.4, containing 0.05 % Proclin-300, 50 % glycerol.
Preservative:	ProClin
Precaution of Use:	This product contains ProClin: a POISONOUS AND HAZARDOUS SUBSTANCE which should be handled by trained staff only.
Storage:	4 °C,-20 °C
Storage Comment:	Store at 4°C for frequent use. Stored at -20°C in a manual defrost freezer for two year without detectable loss of activity. Avoid repeated freeze-thaw cycles.
Expiry Date:	24 months



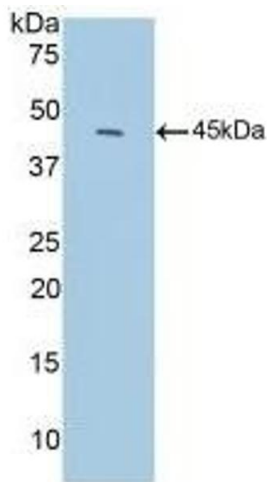
Immunohistochemistry

Image 1. Detection of C3 Convertase in Mouse Liver Tissue using Polyclonal Antibody to Complement C3 Convertase (C3 Convertase)



Flow Cytometry

Image 2. Detection of C3 Convertase in HepG2 human hepatocellular carcinoma cell line using Polyclonal Antibody to Complement C3 Convertase (C3 Convertase)



Western Blotting

Image 3. Detection of Recombinant C3c, Mouse using Polyclonal Antibody to Complement C3 Convertase (C3 Convertase)

Please check the [product details page](#) for more images. Overall 6 images are available for ABIN7442246.