

Datasheet for ABIN7442414  
**anti-IL-1 beta antibody (AA 1-266)**[Go to Product page](#)

## 4 Images

## Overview

Quantity:	100 µL
Target:	IL-1 beta (IL1B)
Binding Specificity:	AA 1-266
Reactivity:	Sheep
Host:	Rabbit
Clonality:	Polyclonal
Conjugate:	This IL-1 beta antibody is un-conjugated
Application:	Western Blotting (WB), Immunohistochemistry (IHC), Immunoprecipitation (IP), Immunocytochemistry (ICC)

## Product Details

Purpose:	Polyclonal Antibody to Interleukin 1 Beta (IL1b)
Immunogen:	Recombinant Interleukin 1 Beta (IL1b) corresponding to Met1~Pro266
Isotype:	IgG
Specificity:	The antibody is a rabbit polyclonal antibody raised against IL1b. It has been selected for its ability to recognize IL1b in immunohistochemical staining and western blotting.
Cross-Reactivity:	Goat
Purification:	Antigen-specific affinity chromatography followed by Protein A affinity chromatography

## Target Details

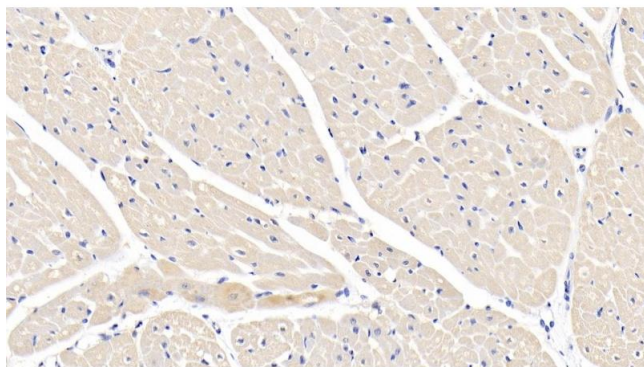
Target:	IL-1 beta (IL1B)
Alternative Name:	Interleukin 1 Beta ( <a href="#">IL1B Products</a> )
Background:	IL1-B, IL1-Beta, IL1F2, IL-1 $\beta$ , Interleukin-1 Family Member 2, Catabolin
Pathways:	<a href="#">NF-kappaB Signaling</a> , <a href="#">Interferon-gamma Pathway</a> , <a href="#">TLR Signaling</a> , <a href="#">Negative Regulation of Hormone Secretion</a> , <a href="#">Cellular Response to Molecule of Bacterial Origin</a> , <a href="#">Carbohydrate Homeostasis</a> , <a href="#">Glycosaminoglycan Metabolic Process</a> , <a href="#">Myometrial Relaxation and Contraction</a> , <a href="#">Regulation of Leukocyte Mediated Immunity</a> , <a href="#">Positive Regulation of Immune Effector Process</a> , <a href="#">Autophagy</a> , <a href="#">Cancer Immune Checkpoints</a> , <a href="#">Inflammasome</a>

## Application Details

Application Notes:	Western blotting: 0.5-2 $\mu$ g/mL Immunohistochemistry: 5-20 $\mu$ g/mL Immunocytochemistry: 5-20 $\mu$ g/mL Optimal working dilutions must be determined by end user.
Comment:	The thermal stability is described by the loss rate. The loss rate was determined by accelerated thermal degradation test, that is, incubate the protein at 37°C for 48h, and no obvious degradation and precipitation were observed. The loss rate is less than 5% within the expiration date under appropriate storage condition.
Restrictions:	For Research Use only

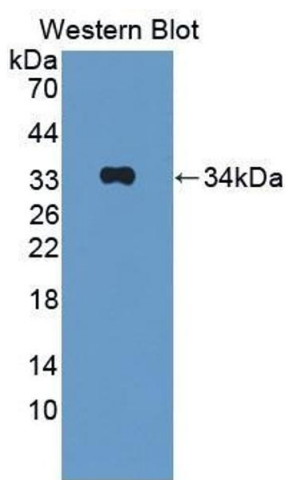
## Handling

Format:	Liquid
Buffer:	0.01M PBS, pH 7.4, containing 0.05 % Proclin-300, 50 % glycerol.
Preservative:	ProClin
Precaution of Use:	This product contains ProClin: a POISONOUS AND HAZARDOUS SUBSTANCE which should be handled by trained staff only.
Storage:	4 °C,-20 °C
Storage Comment:	Store at 4°C for frequent use. Stored at -20°C in a manual defrost freezer for two year without detectable loss of activity. Avoid repeated freeze-thaw cycles.
Expiry Date:	24 months



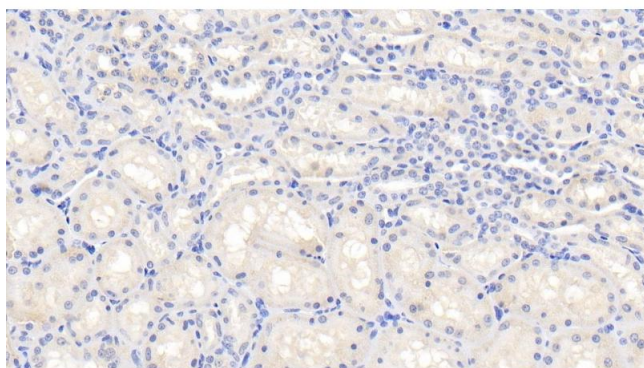
#### Immunohistochemistry

**Image 1.** Detection of IL1b in Caprine Cardiac Muscle Tissue using Polyclonal Antibody to Interleukin 1 Beta (IL1b)



#### Western Blotting

**Image 2.** Detection of Recombinant IL1b, Human using Polyclonal Antibody to Interleukin 1 Beta (IL1b)



#### Immunohistochemistry

**Image 3.** Detection of IL1b in Caprine Kidney Tissue using Polyclonal Antibody to Interleukin 1 Beta (IL1b)

Please check the [product details page](#) for more images. Overall 4 images are available for ABIN7442414.