

Datasheet for ABIN7442438
anti-ROS1 antibody (AA 1945-2222)

6 Images

[Go to Product page](#)

Overview

Quantity:	100 µL
Target:	ROS1
Binding Specificity:	AA 1945-2222
Reactivity:	Human
Host:	Rabbit
Clonality:	Polyclonal
Conjugate:	This ROS1 antibody is un-conjugated
Application:	Western Blotting (WB), ELISA, Immunohistochemistry (Paraffin-embedded Sections) (IHC (p)), Immunocytochemistry (ICC), Immunohistochemistry (Frozen Sections) (IHC (fro))

Product Details

Purpose:	Polyclonal Antibody to C-Ros Oncogene 1, Receptor Tyrosine Kinase (ROS1)
Immunogen:	Recombinant C-Ros Oncogene 1, Receptor Tyrosine Kinase (ROS1) corresponding to Leu1945~Phe2222
Isotype:	IgG
Specificity:	The antibody is a rabbit polyclonal antibody raised against ROS1. It has been selected for its ability to recognize ROS1 in immunohistochemical staining and western blotting.
Purification:	Antigen-specific affinity chromatography followed by Protein A affinity chromatography

Target Details

Target:	ROS1
---------	------

Target Details

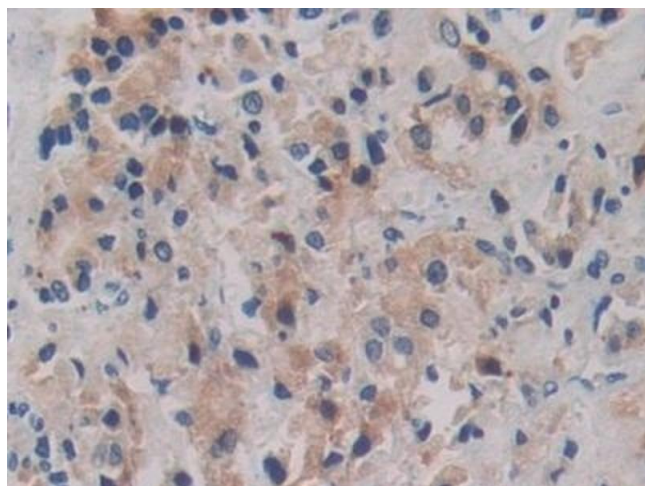
Alternative Name:	C-Ros Oncogene 1, Receptor Tyrosine Kinase (ROS1 Products)
Background:	MCF3, ROS, c-Ros-1, v-Ros Avian UR2 Sarcoma Virus Oncogene Homolog 1, Proto-oncogene tyrosine-protein kinase ROS, Receptor tyrosine kinase c-ros oncogene 1
Pathways:	RTK Signaling

Application Details

Application Notes:	Western blotting: 0.5-2 µg/mL 1:500-2000 Immunohistochemistry: 5-20 µg/mL 1:50-200 Immunocytochemistry: 5-20 µg/mL 1:50-200 Optimal working dilutions must be determined by end user.
Comment:	The thermal stability is described by the loss rate. The loss rate was determined by accelerated thermal degradation test, that is, incubate the protein at 37°C for 48h, and no obvious degradation and precipitation were observed. The loss rate is less than 5% within the expiration date under appropriate storage condition.
Restrictions:	For Research Use only

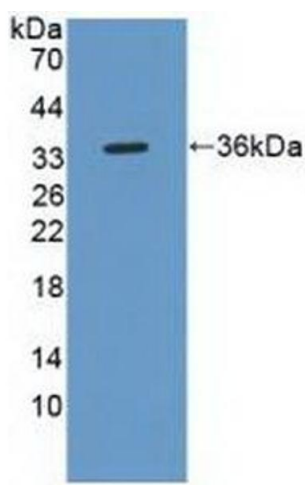
Handling

Format:	Liquid
Buffer:	0.01M PBS, pH 7.4, containing 0.05 % Proclin-300, 50 % glycerol.
Preservative:	ProClin
Precaution of Use:	This product contains ProClin: a POISONOUS AND HAZARDOUS SUBSTANCE which should be handled by trained staff only.
Storage:	4 °C, -20 °C
Storage Comment:	Store at 4°C for frequent use. Stored at -20°C in a manual defrost freezer for two year without detectable loss of activity. Avoid repeated freeze-thaw cycles.
Expiry Date:	24 months



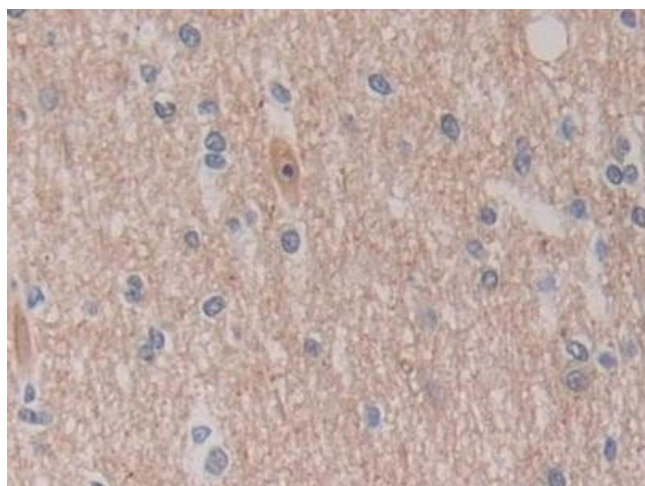
Immunohistochemistry

Image 1. Detection of ROS1 in Human Prostate cancer Tissue using Polyclonal Antibody to C-Ros Oncogene 1, Receptor Tyrosine Kinase (ROS1)



Western Blotting

Image 2. Detection of Recombinant ROS1, Human using Polyclonal Antibody to C-Ros Oncogene 1, Receptor Tyrosine Kinase (ROS1)



Immunohistochemistry

Image 3. Detection of ROS1 in Human Cerebrum Tissue using Polyclonal Antibody to C-Ros Oncogene 1, Receptor Tyrosine Kinase (ROS1)

Please check the [product details page](#) for more images. Overall 6 images are available for ABIN7442438.