

Datasheet for ABIN7442498

anti-Angiotensin I Converting Enzyme 1 antibody (AA 1160-1306)



[Go to Product page](#)

6 Images

Overview

| | |
|----------------------|--|
| Quantity: | 100 µL |
| Target: | Angiotensin I Converting Enzyme 1 (ACE) |
| Binding Specificity: | AA 1160-1306 |
| Reactivity: | Human |
| Host: | Rabbit |
| Clonality: | Polyclonal |
| Conjugate: | This Angiotensin I Converting Enzyme 1 antibody is un-conjugated |
| Application: | Western Blotting (WB), ELISA, Immunohistochemistry (Paraffin-embedded Sections) (IHC (p)), Immunocytochemistry (ICC), Immunohistochemistry (Frozen Sections) (IHC (fro)) |

Product Details

| | |
|---------------|--|
| Purpose: | Polyclonal Antibody to Angiotensin I Converting Enzyme (ACE) |
| Immunogen: | Recombinant Angiotensin I Converting Enzyme (ACE) corresponding to Ser1160~Ser1306 with N-terminal His Tag |
| Isotype: | IgG |
| Specificity: | The antibody is a rabbit polyclonal antibody raised against ACE. It has been selected for its ability to recognize ACE in immunohistochemical staining and western blotting. |
| Purification: | Antigen-specific affinity chromatography followed by Protein A affinity chromatography |

Target Details

| | |
|---------|---|
| Target: | Angiotensin I Converting Enzyme 1 (ACE) |
|---------|---|

Target Details

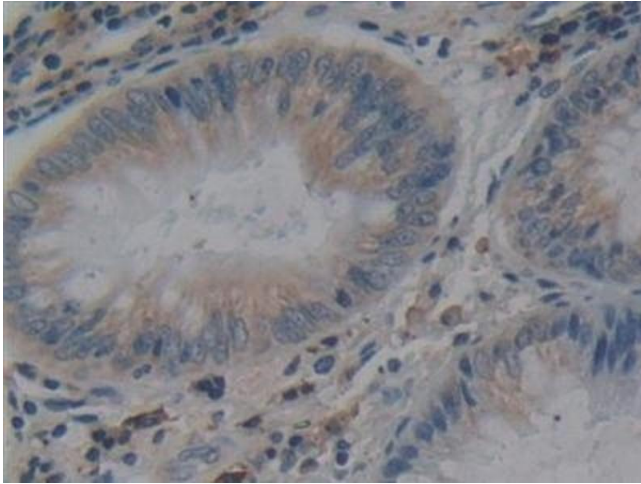
| | |
|-------------------|--|
| Alternative Name: | Angiotensin I Converting Enzyme (ACE Products) |
| Background: | CD143, ACE1, DCP1, ACEI, ACE-I, Kininase II, Angiotensin-Converting Enzyme, Peptidyl-Dipeptidase A, Dipeptidyl Carboxypeptidase 1, Angiotensin-converting enzyme, soluble form |
| Pathways: | ACE Inhibitor Pathway , Peptide Hormone Metabolism , Regulation of Systemic Arterial Blood Pressure by Hormones , Feeding Behaviour , Smooth Muscle Cell Migration |

Application Details

| | |
|--------------------|---|
| Application Notes: | Western blotting: 0.5-2 µg/mL Immunohistochemistry: 5-20 µg/mL Immunocytochemistry: 5-20 µg/mL Optimal working dilutions must be determined by end user. |
| Comment: | The thermal stability is described by the loss rate. The loss rate was determined by accelerated thermal degradation test, that is, incubate the protein at 37°C for 48h, and no obvious degradation and precipitation were observed. The loss rate is less than 5% within the expiration date under appropriate storage condition. |
| Restrictions: | For Research Use only |

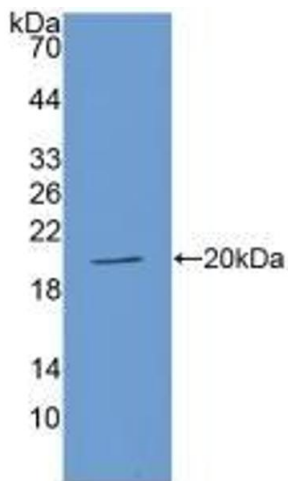
Handling

| | |
|--------------------|---|
| Format: | Liquid |
| Buffer: | 0.01M PBS, pH 7.4, containing 0.05 % Proclin-300, 50 % glycerol. |
| Preservative: | ProClin |
| Precaution of Use: | This product contains ProClin: a POISONOUS AND HAZARDOUS SUBSTANCE which should be handled by trained staff only. |
| Storage: | 4 °C,-20 °C |
| Storage Comment: | Store at 4°C for frequent use. Stored at -20°C in a manual defrost freezer for two year without detectable loss of activity. Avoid repeated freeze-thaw cycles. |
| Expiry Date: | 24 months |



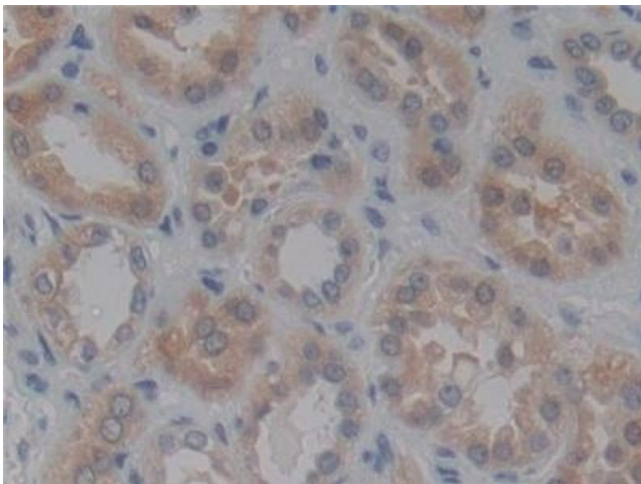
Immunohistochemistry

Image 1. Detection of ACE in Human Colorectal cancer Tissue using Polyclonal Antibody to Angiotensin I Converting Enzyme (ACE)



Western Blotting

Image 2. Detection of Recombinant ACE, Human using Polyclonal Antibody to Angiotensin I Converting Enzyme (ACE)



Immunohistochemistry

Image 3. Detection of ACE in Human Kidney Tissue using Polyclonal Antibody to Angiotensin I Converting Enzyme (ACE)

Please check the [product details page](#) for more images. Overall 6 images are available for ABIN7442498.