



Datasheet for ABIN7442585  
**anti-REG3B antibody (AA 27-175)**



[Go to Product page](#)

2 Images

Overview

Quantity:	100 µL
Target:	REG3B
Binding Specificity:	AA 27-175
Reactivity:	Rat
Host:	Rabbit
Clonality:	Polyclonal
Conjugate:	This REG3B antibody is un-conjugated
Application:	Immunohistochemistry (IHC), Immunoprecipitation (IP), Western Blotting (WB), Immunocytochemistry (ICC)

Product Details

Purpose:	Polyclonal Antibody to Regenerating Islet Derived Protein 3 Beta (REG3b)
Immunogen:	Recombinant Regenerating Islet Derived Protein 3 Beta (REG3b) corresponding to Glu27~Gly175
Isotype:	IgG
Specificity:	The antibody is a rabbit polyclonal antibody raised against REG3b. It has been selected for its ability to recognize REG3b in immunohistochemical staining and western blotting.
Cross-Reactivity:	Mouse
Purification:	Antigen-specific affinity chromatography followed by Protein A affinity chromatography

## Target Details

---

Target:	REG3B
Alternative Name:	Regenerating Islet Derived Protein 3 Beta ( <a href="#">REG3B Products</a> )
Background:	PAP1, Pancreatitis-Associated Protein 1

## Application Details

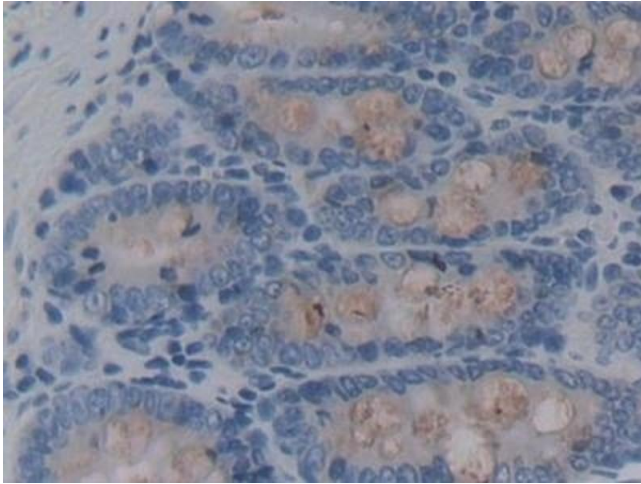
---

Application Notes:	Western blotting: 0.5-2 µg/mL 1:500-2000 Immunohistochemistry: 5-20 µg/mL 1:50-200 Immunocytochemistry: 5-20 µg/mL 1:50-200 Optimal working dilutions must be determined by end user.
Comment:	The thermal stability is described by the loss rate. The loss rate was determined by accelerated thermal degradation test, that is, incubate the protein at 37°C for 48h, and no obvious degradation and precipitation were observed. The loss rate is less than 5% within the expiration date under appropriate storage condition.
Restrictions:	For Research Use only

## Handling

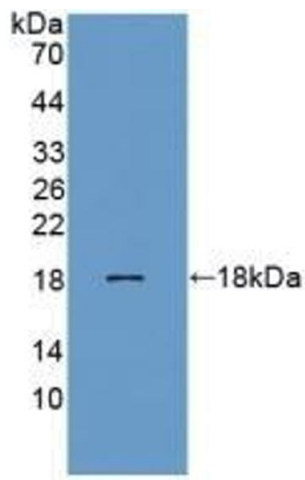
---

Format:	Liquid
Buffer:	0.01M PBS, pH 7.4, containing 0.05 % Proclin-300, 50 % glycerol.
Preservative:	ProClin
Precaution of Use:	This product contains ProClin: a POISONOUS AND HAZARDOUS SUBSTANCE which should be handled by trained staff only.
Storage:	4 °C,-20 °C
Storage Comment:	Store at 4°C for frequent use. Stored at -20°C in a manual defrost freezer for two year without detectable loss of activity. Avoid repeated freeze-thaw cycles.
Expiry Date:	24 months



### Immunohistochemistry

**Image 1.** Detection of REG3b in Rat Rectum Tissue using Polyclonal Antibody to Regenerating Islet Derived Protein 3 Beta (REG3b)



### Western Blotting

**Image 2.** Detection of Recombinant REG3b, Rat using Polyclonal Antibody to Regenerating Islet Derived Protein 3 Beta (REG3b)