



[Go to Product page](#)

Datasheet for ABIN7442612  
**anti-KEAP1 antibody (AA 1-286)**

3 Images

### Overview

Quantity:	100 µL
Target:	KEAP1
Binding Specificity:	AA 1-286
Reactivity:	Mouse
Host:	Rabbit
Clonality:	Polyclonal
Conjugate:	This KEAP1 antibody is un-conjugated
Application:	Western Blotting (WB), Immunohistochemistry (IHC), Immunoprecipitation (IP), Immunocytochemistry (ICC)

### Product Details

Purpose:	Polyclonal Antibody to Kelch Like ECH Associated Protein 1 (KEAP1)
Immunogen:	Recombinant Kelch Like ECH Associated Protein 1 (KEAP1) corresponding to Met1~Gln286 with N-terminal His Tag
Isotype:	IgG
Specificity:	The antibody is a rabbit polyclonal antibody raised against KEAP1. It has been selected for its ability to recognize KEAP1 in immunohistochemical staining and western blotting.
Cross-Reactivity:	Human, Rat
Purification:	Antigen-specific affinity chromatography followed by Protein A affinity chromatography

## Target Details

---

Target:	KEAP1
Alternative Name:	Kelch Like ECH Associated Protein 1 ( <a href="#">KEAP1 Products</a> )
Background:	INrf2, KLHL19, Cytosolic inhibitor of Nrf2, Kelch-like protein 19
Pathways:	<a href="#">Maintenance of Protein Location</a>

## Application Details

---

Application Notes:	Western blotting: 0.5-2 µg/mL Immunohistochemistry: 5-20 µg/mL Immunocytochemistry: 5-20 µg/mL Optimal working dilutions must be determined by end user.
Comment:	The thermal stability is described by the loss rate. The loss rate was determined by accelerated thermal degradation test, that is, incubate the protein at 37°C for 48h, and no obvious degradation and precipitation were observed. The loss rate is less than 5% within the expiration date under appropriate storage condition.
Restrictions:	For Research Use only

## Handling

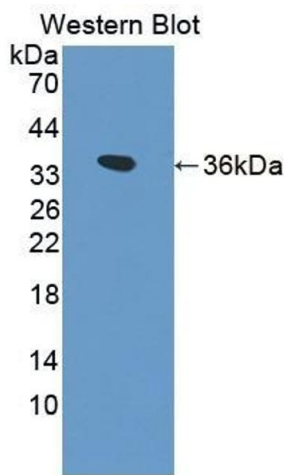
---

Format:	Liquid
Buffer:	PBS, pH 7.4, containing 0.02 % Sodium azide, 50 % glycerol.
Preservative:	Sodium azide
Precaution of Use:	This product contains Sodium azide: a POISONOUS AND HAZARDOUS SUBSTANCE which should be handled by trained staff only.
Storage:	4 °C, -20 °C
Storage Comment:	Store at 4°C for frequent use. Stored at -20°C in a manual defrost freezer for two year without detectable loss of activity. Avoid repeated freeze-thaw cycles.
Expiry Date:	24 months



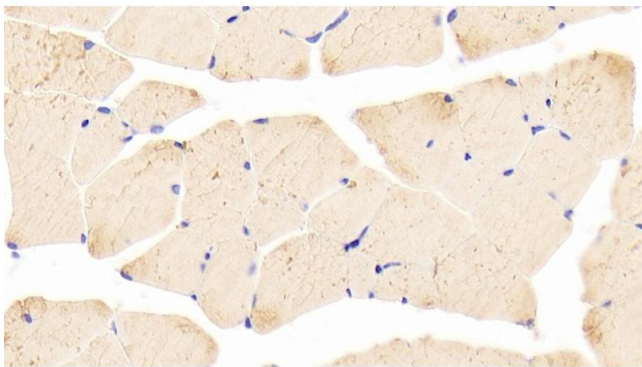
#### Western Blotting

**Image 1.** Detection of KEAP1 in Mouse Serum using Polyclonal Antibody to Kelch Like ECH Associated Protein 1 (KEAP1)



#### Western Blotting

**Image 2.** Detection of Recombinant KEAP1, Mouse using Polyclonal Antibody to Kelch Like ECH Associated Protein 1 (KEAP1)



#### Immunohistochemistry

**Image 3.** Detection of KEAP1 in Mouse Skeletal muscle Tissue using Polyclonal Antibody to Kelch Like ECH Associated Protein 1 (KEAP1)