



[Go to Product page](#)

Datasheet for ABIN7442687

anti-Phospholamban antibody (AA 1-52)

8 Images

Overview

Quantity:	100 µL
Target:	Phospholamban (PLN)
Binding Specificity:	AA 1-52
Reactivity:	Human
Host:	Rabbit
Clonality:	Polyclonal
Conjugate:	This Phospholamban antibody is un-conjugated
Application:	Western Blotting (WB), Immunohistochemistry (IHC), Immunoprecipitation (IP), Immunocytochemistry (ICC)

Product Details

Purpose:	Polyclonal Antibody to Phospholamban (PLN)
Immunogen:	Recombinant Phospholamban (PLN) corresponding to Met1~Leu52 with N-terminal His and GST Tag
Isotype:	IgG
Specificity:	The antibody is a rabbit polyclonal antibody raised against PLN. It has been selected for its ability to recognize PLN in immunohistochemical staining and western blotting.
Cross-Reactivity:	Mouse, Rat
Purification:	Antigen-specific affinity chromatography followed by Protein A affinity chromatography

Target Details

Target:	Phospholamban (PLN)
Alternative Name:	Phospholamban (PLN Products)
Background:	PLB, CMD1P, Cardiac phospholamban
Pathways:	Negative Regulation of Transporter Activity

Application Details

Application Notes:	Western blotting: 0.5-2 µg/mL Immunohistochemistry: 5-20 µg/mL Immunocytochemistry: 5-20 µg/mL Optimal working dilutions must be determined by end user.
Comment:	The thermal stability is described by the loss rate. The loss rate was determined by accelerated thermal degradation test, that is, incubate the protein at 37°C for 48h, and no obvious degradation and precipitation were observed. The loss rate is less than 5% within the expiration date under appropriate storage condition.
Restrictions:	For Research Use only

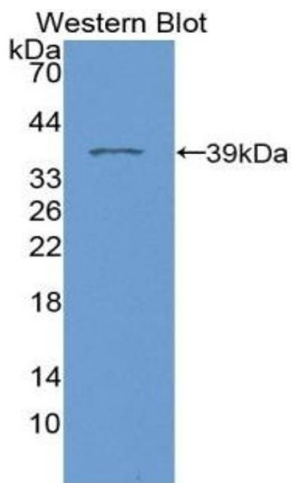
Handling

Format:	Liquid
Buffer:	0.01M PBS, pH 7.4, containing 0.05 % Proclin-300, 50 % glycerol.
Preservative:	ProClin
Precaution of Use:	This product contains ProClin: a POISONOUS AND HAZARDOUS SUBSTANCE which should be handled by trained staff only.
Storage:	4 °C,-20 °C
Storage Comment:	Store at 4°C for frequent use. Stored at -20°C in a manual defrost freezer for two year without detectable loss of activity. Avoid repeated freeze-thaw cycles.
Expiry Date:	24 months



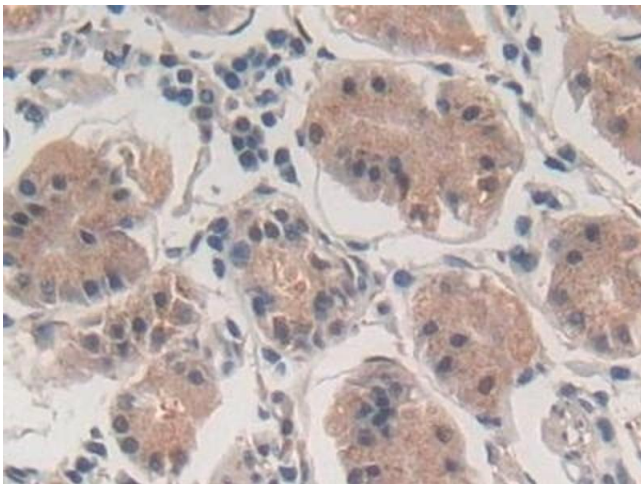
Western Blotting

Image 1. Detection of PLN in Rat Heart lysate using Polyclonal Antibody to Phospholamban (PLN)



Western Blotting

Image 2. Detection of Recombinant PLN, Human using Polyclonal Antibody to Phospholamban (PLN)



Immunohistochemistry

Image 3. Detection of PLN in Human Stomach Tissue using Polyclonal Antibody to Phospholamban (PLN)

Please check the [product details page](#) for more images. Overall 8 images are available for ABIN7442687.