



[Go to Product page](#)

Datasheet for ABIN7442702  
**anti-BMF antibody (AA 1-181)**

5 Images

### Overview

Quantity:	100 µL
Target:	BMF
Binding Specificity:	AA 1-181
Reactivity:	Human
Host:	Rabbit
Clonality:	Polyclonal
Conjugate:	This BMF antibody is un-conjugated
Application:	Western Blotting (WB), Immunohistochemistry (IHC), Immunoprecipitation (IP), Immunocytochemistry (ICC)

### Product Details

Purpose:	Polyclonal Antibody to Bcl2 Modifying Factor (BMF)
Immunogen:	Recombinant Bcl2 Modifying Factor (BMF) corresponding to Met1~Ala181 with N-terminal His Tag
Isotype:	IgG
Specificity:	The antibody is a rabbit polyclonal antibody raised against BMF. It has been selected for its ability to recognize BMF in immunohistochemical staining and western blotting.
Purification:	Antigen-specific affinity chromatography followed by Protein A affinity chromatography

### Target Details

Target:	BMF
---------	-----

## Target Details

---

Alternative Name: Bcl2 Modifying Factor ([BMF Products](#))

## Application Details

---

Application Notes: Western blotting: 0.5-5 µg/mL Immunohistochemistry: 5-20 µg/mL Immunocytochemistry: 5-20 µg/mL Optimal working dilutions must be determined by end user.

Comment: The thermal stability is described by the loss rate. The loss rate was determined by accelerated thermal degradation test, that is, incubate the protein at 37°C for 48h, and no obvious degradation and precipitation were observed. The loss rate is less than 5% within the expiration date under appropriate storage condition.

Restrictions: For Research Use only

## Handling

---

Format: Liquid

Buffer: 0.01M PBS, pH 7.4, containing 0.05 % Proclin-300, 50 % glycerol.

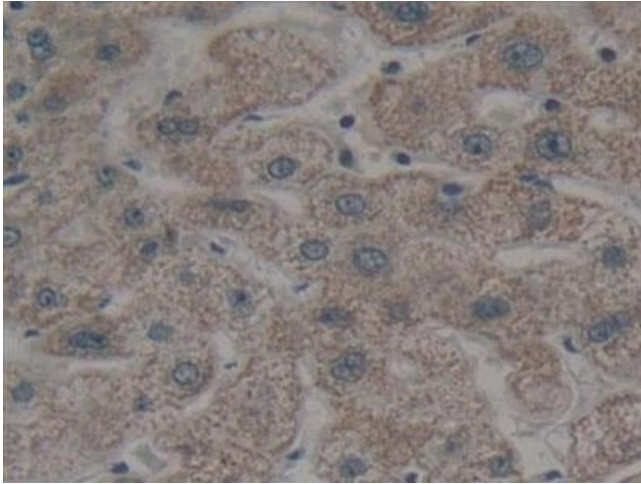
Preservative: ProClin

Precaution of Use: This product contains ProClin: a POISONOUS AND HAZARDOUS SUBSTANCE which should be handled by trained staff only.

Storage: 4 °C,-20 °C

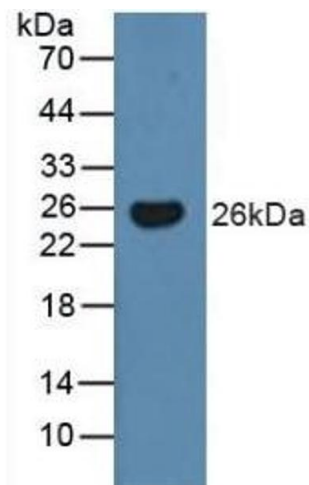
Storage Comment: Store at 4°C for frequent use. Stored at -20°C in a manual defrost freezer for two year without detectable loss of activity. Avoid repeated freeze-thaw cycles.

Expiry Date: 24 months



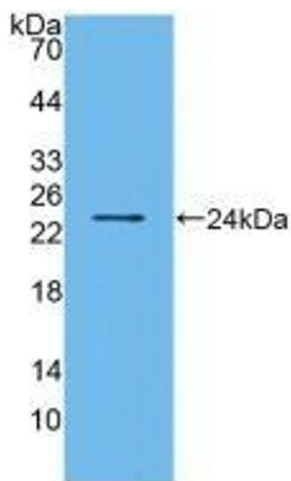
### Immunohistochemistry

**Image 1.** Detection of BMF in Human Liver Tissue using Polyclonal Antibody to Bcl2 Modifying Factor (BMF)



### Western Blotting

**Image 2.** Detection of BMF in Human Serum using Polyclonal Antibody to Bcl2 Modifying Factor (BMF)



### Western Blotting

**Image 3.** Detection of Recombinant BMF, Human using Polyclonal Antibody to Bcl2 Modifying Factor (BMF)

Please check the [product details page](#) for more images. Overall 5 images are available for ABIN7442702.