

Datasheet for ABIN7442732

anti-CENPH antibody (AA 1-247)**5** Images[Go to Product page](#)

Overview

Quantity:	100 µL
Target:	CENPH
Binding Specificity:	AA 1-247
Reactivity:	Human
Host:	Rabbit
Clonality:	Polyclonal
Conjugate:	This CENPH antibody is un-conjugated
Application:	Western Blotting (WB), Immunohistochemistry (IHC), Immunoprecipitation (IP), Immunocytochemistry (ICC)

Product Details

Purpose:	Polyclonal Antibody to Centromere Protein H (CENPH)
Immunogen:	Recombinant Centromere Protein H (CENPH) corresponding to Met1~Met247 (Accession # Q9H3R5)
Isotype:	IgG
Specificity:	The antibody is a rabbit polyclonal antibody raised against CENPH. It has been selected for its ability to recognize CENPH in immunohistochemical staining and western blotting.
Cross-Reactivity:	Mouse
Purification:	Antigen-specific affinity chromatography followed by Protein A affinity chromatography

Target Details

Target:	CENPH
Alternative Name:	Centromere Protein H (CENPH Products)
Background:	CENP-H, Enp, PMF1, NNF1, MIND Kinetochore Complex Component, Homolog

Application Details

Application Notes:	Western blotting: 0.5-3 µg/mL Immunohistochemistry: 5-30 µg/mL Immunocytochemistry: 5-30 µg/mL Optimal working dilutions must be determined by end user.
Comment:	The thermal stability is described by the loss rate. The loss rate was determined by accelerated thermal degradation test, that is, incubate the protein at 37°C for 48h, and no obvious degradation and precipitation were observed. The loss rate is less than 5% within the expiration date under appropriate storage condition.
Restrictions:	For Research Use only

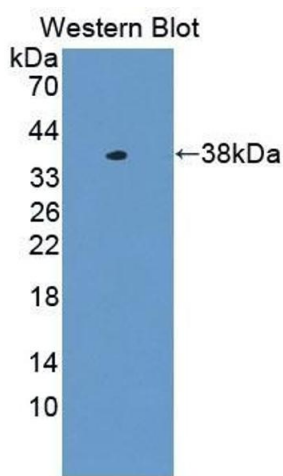
Handling

Format:	Liquid
Buffer:	PBS, pH 7.4, containing 0.02 % Sodium azide, 50 % glycerol.
Preservative:	Sodium azide
Precaution of Use:	This product contains Sodium azide: a POISONOUS AND HAZARDOUS SUBSTANCE which should be handled by trained staff only.
Storage:	4 °C, -20 °C
Storage Comment:	Store at 4°C for frequent use. Stored at -20°C in a manual defrost freezer for two year without detectable loss of activity. Avoid repeated freeze-thaw cycles.
Expiry Date:	24 months



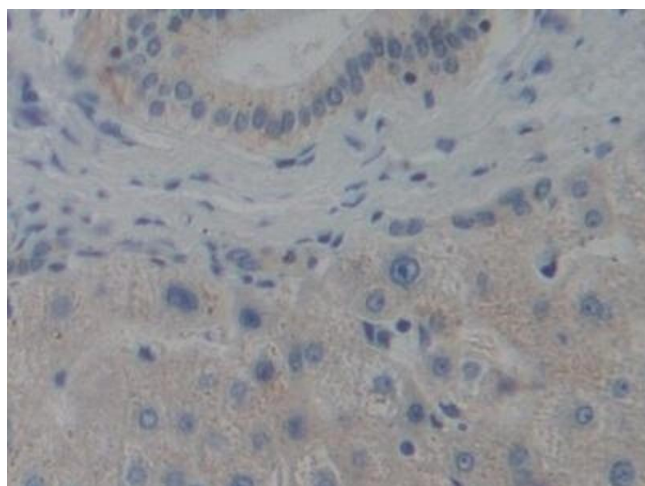
Western Blotting

Image 1. Detection of CENPH in Human 293T cell lysate using Polyclonal Antibody to Centromere Protein H (CENPH)



Western Blotting

Image 2. Detection of Recombinant CENPH, Human using Polyclonal Antibody to Centromere Protein H (CENPH)



Immunohistochemistry

Image 3. Detection of CENPH in Human Liver Tissue using Polyclonal Antibody to Centromere Protein H (CENPH)

Please check the [product details page](#) for more images. Overall 5 images are available for ABIN7442732.