

Datasheet for ABIN7442792

anti-PKC mu antibody

5 Images

[Go to Product page](#)

Overview

| | |
|--------------|---|
| Quantity: | 100 µL |
| Target: | PKC mu (PRKD1) |
| Reactivity: | Human |
| Host: | Rabbit |
| Clonality: | Polyclonal |
| Conjugate: | This PKC mu antibody is un-conjugated |
| Application: | Western Blotting (WB), Immunohistochemistry (IHC), Immunoprecipitation (IP), Immunocytochemistry (ICC) |

Product Details

| | |
|---------------|--|
| Purpose: | Polyclonal Antibody to Protein Kinase D1 (PKD1) |
| Immunogen: | Recombinant Protein Kinase D1 (PKD1) |
| Isotype: | IgG |
| Specificity: | The antibody is a rabbit polyclonal antibody raised against PKD1. It has been selected for its ability to recognize PKD1 in immunohistochemical staining and western blotting. |
| Purification: | Antigen-specific affinity chromatography followed by Protein A affinity chromatography |

Target Details

| | |
|-------------------|--|
| Target: | PKC mu (PRKD1) |
| Alternative Name: | Protein Kinase D1 (PRKD1 Products) |

Target Details

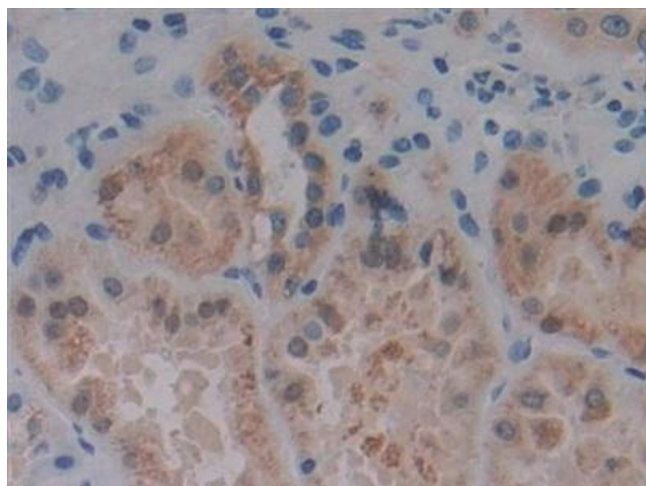
| | |
|-------------|--|
| Background: | PRKD1, PRK-D1, PKC-MU, PKCM, PK-D1, PRKCM, Protein Kinase C,Mu |
| Pathways: | Myometrial Relaxation and Contraction |

Application Details

| | |
|--------------------|---|
| Application Notes: | Western blotting: 0.5-2 µg/mL 1:500-2000 Immunohistochemistry: 5-20 µg/mL 1:50-200 Immunocytochemistry: 5-20 µg/mL 1:50-200 Optimal working dilutions must be determined by end user. |
| Comment: | The thermal stability is described by the loss rate. The loss rate was determined by accelerated thermal degradation test, that is, incubate the protein at 37°C for 48h, and no obvious degradation and precipitation were observed. The loss rate is less than 5% within the expiration date under appropriate storage condition. |
| Restrictions: | For Research Use only |

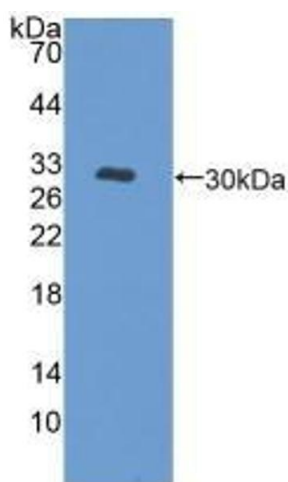
Handling

| | |
|--------------------|---|
| Format: | Liquid |
| Buffer: | 0.01M PBS, pH 7.4, containing 0.05 % Proclin-300, 50 % glycerol. |
| Preservative: | ProClin |
| Precaution of Use: | This product contains ProClin: a POISONOUS AND HAZARDOUS SUBSTANCE which should be handled by trained staff only. |
| Storage: | 4 °C,-20 °C |
| Storage Comment: | Store at 4°C for frequent use. Stored at -20°C in a manual defrost freezer for two year without detectable loss of activity. Avoid repeated freeze-thaw cycles. |
| Expiry Date: | 24 months |



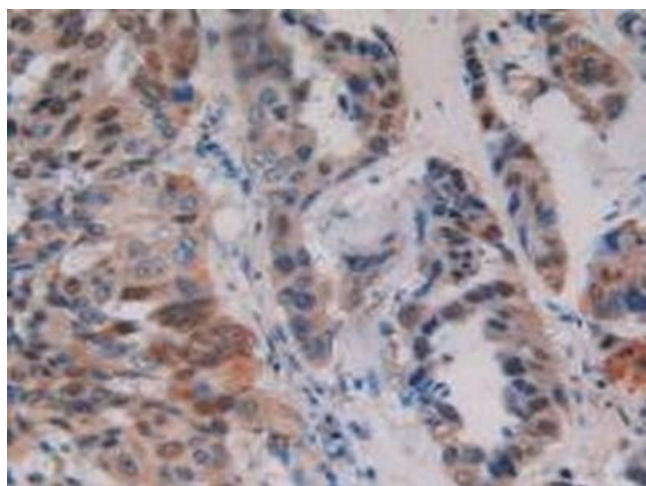
Immunohistochemistry

Image 1. Detection of PKD1 in Human Kidney Tissue using Polyclonal Antibody to Protein Kinase D1 (PKD1)



Western Blotting

Image 2. Detection of Recombinant PKD1, Human using Polyclonal Antibody to Protein Kinase D1 (PKD1)



Immunohistochemistry

Image 3. Detection of PKD1 in Human Breast Cancer Tissue using Polyclonal Antibody to Protein Kinase D1 (PKD1)

Please check the [product details page](#) for more images. Overall 5 images are available for ABIN7442792.