

Datasheet for ABIN7442831  
**anti-SERPINB3 antibody (AA 1-210)**

## 2 Images

[Go to Product page](#)

## Overview

Quantity:	100 µL
Target:	SERPINB3
Binding Specificity:	AA 1-210
Reactivity:	Human
Host:	Rabbit
Clonality:	Polyclonal
Conjugate:	This SERPINB3 antibody is un-conjugated
Application:	Western Blotting (WB), Immunohistochemistry (IHC), Immunocytochemistry (ICC), Immunoprecipitation (IP)

## Product Details

Purpose:	Polyclonal Antibody to Serpin B3 (SERPINB3)
Immunogen:	Recombinant Serpin B3 (SERPINB3) corresponding to Met1~Ile210 (Accession # P29508)
Isotype:	IgG
Specificity:	The antibody is a rabbit polyclonal antibody raised against SERPINB3. It has been selected for its ability to recognize SERPINB3 in immunohistochemical staining and western blotting.
Cross-Reactivity:	Mouse, Pig
Purification:	Antigen-specific affinity chromatography followed by Protein A affinity chromatography

## Target Details

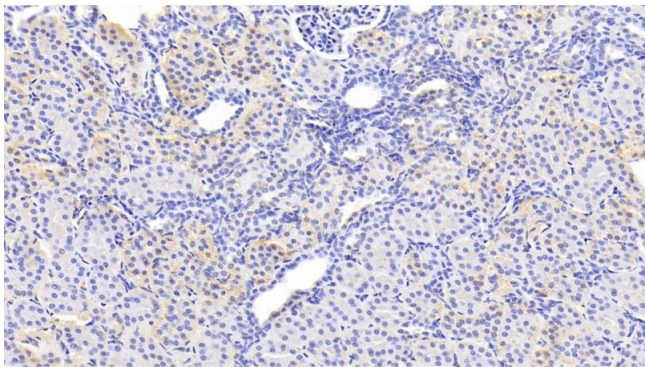
Target:	SERPINB3
Alternative Name:	Serpin B3 ( <a href="#">SERPINB3 Products</a> )
Background:	SCCA1, T4-A, Serpin Peptidase Inhibitor,Clade B(ovalbumin),Member 3, Serpin B3

## Application Details

Application Notes:	Western blotting: 0.5-2 µg/mL Immunohistochemistry: 5-20 µg/mL Immunocytochemistry: 5-20 µg/mL Optimal working dilutions must be determined by end user.
Comment:	The thermal stability is described by the loss rate. The loss rate was determined by accelerated thermal degradation test, that is, incubate the protein at 37°C for 48h, and no obvious degradation and precipitation were observed. The loss rate is less than 5% within the expiration date under appropriate storage condition.
Restrictions:	For Research Use only

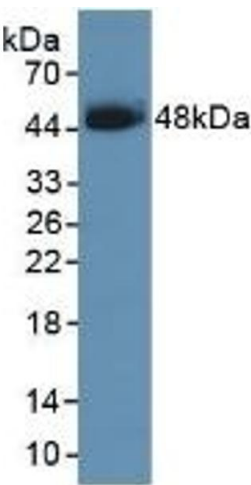
## Handling

Format:	Liquid
Buffer:	0.01M PBS, pH 7.4, containing 0.05 % Proclin-300, 50 % glycerol.
Preservative:	ProClin
Precaution of Use:	This product contains ProClin: a POISONOUS AND HAZARDOUS SUBSTANCE which should be handled by trained staff only.
Storage:	4 °C,-20 °C
Storage Comment:	Store at 4°C for frequent use. Stored at -20°C in a manual defrost freezer for two year without detectable loss of activity. Avoid repeated freeze-thaw cycles.
Expiry Date:	24 months



#### Immunohistochemistry

**Image 1.** Detection of SERPINB3 in Human Kidney Tissue using Polyclonal Antibody to Serpin B3 (SERPINB3)



#### Western Blotting

**Image 2.** Detection of Recombinant SCCA1, Human using Polyclonal Antibody to Serpin B3 (SERPINB3)