

Datasheet for ABIN7442930

anti-Complement C4 antibody (AA 1428-1660)**2** Images[Go to Product page](#)

Overview

Quantity:	100 µL
Target:	Complement C4 (C4)
Binding Specificity:	AA 1428-1660
Reactivity:	Chicken
Host:	Rabbit
Clonality:	Polyclonal
Conjugate:	This Complement C4 antibody is un-conjugated
Application:	Western Blotting (WB), Immunohistochemistry (IHC), Immunoprecipitation (IP), Immunocytochemistry (ICC)

Product Details

Purpose:	Polyclonal Antibody to Complement Component 4 (C4)
Immunogen:	Recombinant Complement Component 4 (C4) corresponding to Leu1428~Gln1660 (Accession # 116175422)
Isotype:	IgG
Specificity:	The antibody is a rabbit polyclonal antibody raised against C4. It has been selected for its ability to recognize C4 in immunohistochemical staining and western blotting.
Purification:	Antigen-specific affinity chromatography followed by Protein A affinity chromatography

Target Details

Target:	Complement C4 (C4)
---------	--------------------

Target Details

Alternative Name: Complement Component 4 ([C4 Products](#))

Pathways: [Complement System](#)

Application Details

Application Notes: Western blotting: 0.5-5 µg/mL
Immunohistochemistry: 5-50 µg/mL
Immunocytochemistry: 5-50 µg/mL
Optimal working dilutions must be determined by end user.

Comment: The thermal stability is described by the loss rate. The loss rate was determined by accelerated thermal degradation test, that is, incubate the protein at 37°C for 48h, and no obvious degradation and precipitation were observed. The loss rate is less than 5% within the expiration date under appropriate storage condition.

Restrictions: For Research Use only

Handling

Format: Liquid

Buffer: PBS, pH 7.4, containing 0.02 % Sodium azide, 50 % glycerol.

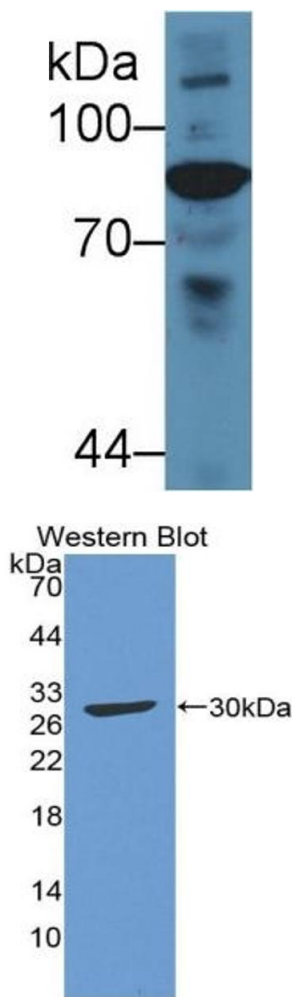
Preservative: Sodium azide

Precaution of Use: This product contains Sodium azide: a POISONOUS AND HAZARDOUS SUBSTANCE which should be handled by trained staff only.

Storage: 4 °C,-20 °C

Storage Comment: Store at 4°C for frequent use. Stored at -20°C in a manual defrost freezer for two year without detectable loss of activity. Avoid repeated freeze-thaw cycles.

Expiry Date: 24 months



Western Blotting

Image 1. Detection of C4 in Gallus Serum using Polyclonal Antibody to Complement Component 4 (C4)

Western Blotting

Image 2. Detection of Recombinant C4, Gallus using Polyclonal Antibody to Complement Component 4 (C4)