



[Go to Product page](#)

Datasheet for ABIN7442951  
**anti-ITGB6 antibody (AA 131-619)**

4 Images

Overview

|                      |  |
|----------------------|--|
| Quantity:            | 100 µL   |
| Target:              | ITGB6  |
| Binding Specificity: | AA 131-619   |
| Reactivity:          | Mouse  |
| Host:                | Rabbit   |
| Clonality:           | Polyclonal   |
| Conjugate:           | This ITGB6 antibody is un-conjugated   |
| Application:         | Western Blotting (WB), Immunohistochemistry (IHC), Immunoprecipitation (IP), Immunocytochemistry (ICC) |

Product Details

|                   |  |
|-------------------|--|
| Purpose:          | Polyclonal Antibody to Integrin Beta 6 (ITGb6)   |
| Immunogen:        | Recombinant Integrin Beta 6 (ITGb6) corresponding to Tyr131~Thr619 with N-terminal His Tag   |
| Isotype:          | IgG  |
| Specificity:      | The antibody is a rabbit polyclonal antibody raised against ITGb6. It has been selected for its ability to recognize ITGb6 in immunohistochemical staining and western blotting. |
| Cross-Reactivity: | Human, Rat   |
| Purification:     | Antigen-specific affinity chromatography followed by Protein A affinity chromatography   |

## Target Details

---

|                   |  |
|-------------------|--|
| Target:           | ITGB6  |
| Alternative Name: | Integrin Beta 6 ( <a href="#">ITGB6 Products</a> ) |
| Background:       | ITG-B6   |

## Application Details

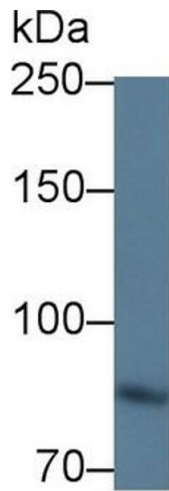
---

|                    |   |
|--------------------|---|
| Application Notes: | Western blotting: 0.5-2 µg/mL<br>Immunohistochemistry: 5-20 µg/mL<br>Immunocytochemistry: 5-20 µg/mL<br>Optimal working dilutions must be determined by end user.   |
| Comment:           | The thermal stability is described by the loss rate. The loss rate was determined by accelerated thermal degradation test, that is, incubate the protein at 37°C for 48h, and no obvious degradation and precipitation were observed. The loss rate is less than 5% within the expiration date under appropriate storage condition. |
| Restrictions:      | For Research Use only   |

## Handling

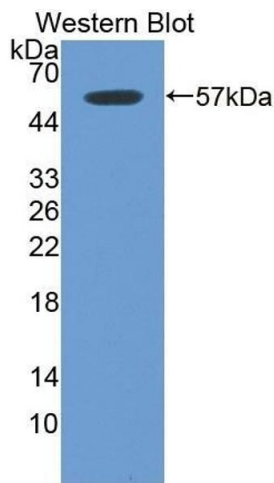
---

|                    |   |
|--------------------|---|
| Format:            | Liquid  |
| Buffer:            | PBS, pH 7.4, containing 0.02 % Sodium azide, 50 % glycerol.   |
| Preservative:      | Sodium azide  |
| Precaution of Use: | This product contains Sodium azide: a POISONOUS AND HAZARDOUS SUBSTANCE which should be handled by trained staff only.  |
| Storage:           | 4 °C,-20 °C   |
| Storage Comment:   | Store at 4°C for frequent use. Stored at -20°C in a manual defrost freezer for two year without detectable loss of activity. Avoid repeated freeze-thaw cycles. |
| Expiry Date:       | 24 months   |



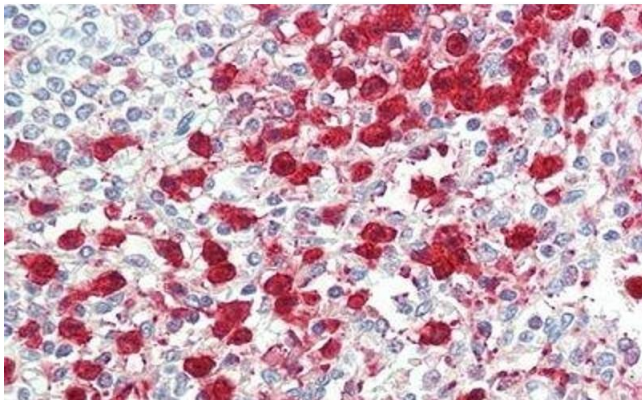
#### Western Blotting

**Image 1.** Detection of ITGb6 in Mouse Kidney lysate using Polyclonal Antibody to Integrin Beta 6 (ITGb6)



#### Western Blotting

**Image 2.** Detection of Recombinant ITGb6, Mouse using Polyclonal Antibody to Integrin Beta 6 (ITGb6)



#### Immunohistochemistry

**Image 3.** Detection of ITGb6 in Human Spleen Tissue using Polyclonal Antibody to Integrin Beta 6 (ITGb6)

Please check the [product details page](#) for more images. Overall 4 images are available for ABIN7442951.