



[Go to Product page](#)

Datasheet for ABIN7443023
anti-Ghrelin antibody (AA 28-117)

4 Images

Overview

Quantity:	100 µL
Target:	Ghrelin (GHRL)
Binding Specificity:	AA 28-117
Reactivity:	Mouse
Host:	Rabbit
Clonality:	Polyclonal
Conjugate:	This Ghrelin antibody is un-conjugated
Application:	Western Blotting (WB), Immunohistochemistry (IHC), Immunoprecipitation (IP), Immunocytochemistry (ICC)

Product Details

Purpose:	Polyclonal Antibody to Ghrelin (GHRL)
Immunogen:	Recombinant Ghrelin (GHRL) corresponding to Leu28~Lys117 with N-terminal His and GST Tag
Isotype:	IgG
Specificity:	The antibody is a rabbit polyclonal antibody raised against GHRL. It has been selected for its ability to recognize GHRL in immunohistochemical staining and western blotting.
Purification:	Antigen-specific affinity chromatography followed by Protein A affinity chromatography

Target Details

Target:	Ghrelin (GHRL)
---------	----------------

Target Details

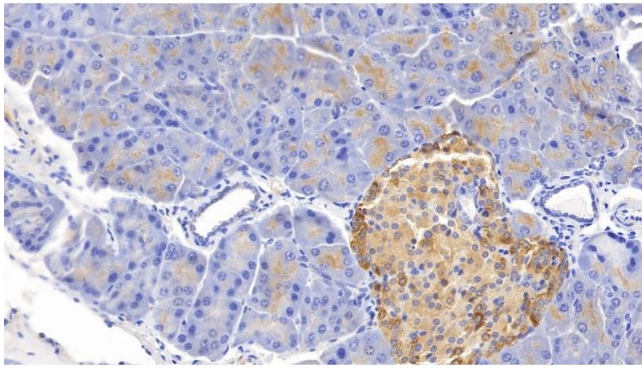
Alternative Name:	Ghrelin (GHRL Products)
Background:	MTLRP, Growth Hormone-Releasing Peptide
Pathways:	Positive Regulation of Peptide Hormone Secretion , Hormone Transport , Peptide Hormone Metabolism , Negative Regulation of Hormone Secretion , Synaptic Membrane , Feeding Behaviour

Application Details

Application Notes:	Western blotting: 0.5-2 µg/mL 1:250-1000 Immunohistochemistry: 5-20 µg/mL 1:25-100 Immunocytochemistry: 5-20 µg/mL 1:25-100 Optimal working dilutions must be determined by end user.
Comment:	The thermal stability is described by the loss rate. The loss rate was determined by accelerated thermal degradation test, that is, incubate the protein at 37°C for 48h, and no obvious degradation and precipitation were observed. The loss rate is less than 5% within the expiration date under appropriate storage condition.
Restrictions:	For Research Use only

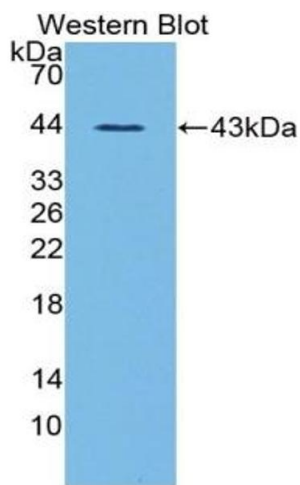
Handling

Format:	Liquid
Buffer:	0.01M PBS, pH 7.4, containing 0.05 % Proclin-300, 50 % glycerol.
Preservative:	ProClin
Precaution of Use:	This product contains ProClin: a POISONOUS AND HAZARDOUS SUBSTANCE which should be handled by trained staff only.
Storage:	4 °C,-20 °C
Storage Comment:	Store at 4°C for frequent use. Stored at -20°C in a manual defrost freezer for two year without detectable loss of activity. Avoid repeated freeze-thaw cycles.
Expiry Date:	24 months



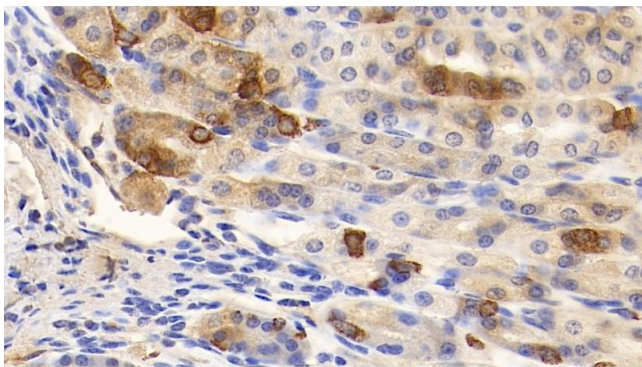
Immunohistochemistry

Image 1. Detection of GHRL in Mouse Pancreas Tissue using Polyclonal Antibody to Ghrelin (GHRL)



Western Blotting

Image 2. Detection of Recombinant GHRL, Mouse using Polyclonal Antibody to Ghrelin (GHRL)



Immunohistochemistry

Image 3. Detection of GHRL in Mouse Stomach Tissue using Polyclonal Antibody to Ghrelin (GHRL)

Please check the [product details page](#) for more images. Overall 4 images are available for ABIN7443023.