

Datasheet for ABIN7443038
anti-GTF2E1 antibody (AA 15-306)

4 Images

[Go to Product page](#)

Overview

Quantity:	100 µL
Target:	GTF2E1
Binding Specificity:	AA 15-306
Reactivity:	Human
Host:	Rabbit
Clonality:	Polyclonal
Conjugate:	This GTF2E1 antibody is un-conjugated
Application:	Western Blotting (WB), Immunohistochemistry (IHC), Immunoprecipitation (IP), Immunocytochemistry (ICC)

Product Details

Purpose:	Polyclonal Antibody to General Transcription Factor IIE, Polypeptide 1 (GTF2E1)
Immunogen:	Recombinant General Transcription Factor IIE, Polypeptide 1 (GTF2E1) corresponding to Lys15~Gln306 (Accession # P29083)
Isotype:	IgG
Specificity:	The antibody is a rabbit polyclonal antibody raised against GTF2E1. It has been selected for its ability to recognize GTF2E1 in immunohistochemical staining and western blotting.
Cross-Reactivity:	Mouse, Rat
Purification:	Antigen-specific affinity chromatography followed by Protein A affinity chromatography

Target Details

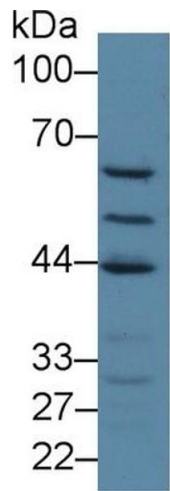
Target:	GTF2E1
Alternative Name:	General Transcription Factor IIE, Polypeptide 1 (GTF2E1 Products)
Background:	TFIIE-A, FE, TFIIE, TF2E1, TF2-E1, Transcription Factor II E1, General transcription factor IIE 56 kDa subunit, Transcription initiation factor IIE subunit alpha

Application Details

Application Notes:	Western blotting: 0.5-2 µg/mL 1:420-1700 Immunohistochemistry: 5-20 µg/mL 1:42-170 Immunocytochemistry: 5-20 µg/mL 1:42-170 Optimal working dilutions must be determined by end user.
Comment:	The thermal stability is described by the loss rate. The loss rate was determined by accelerated thermal degradation test, that is, incubate the protein at 37°C for 48h, and no obvious degradation and precipitation were observed. The loss rate is less than 5% within the expiration date under appropriate storage condition.
Restrictions:	For Research Use only

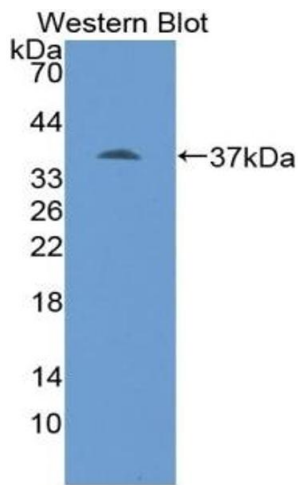
Handling

Format:	Liquid
Buffer:	PBS, pH 7.4, containing 0.02 % Sodium azide, 50 % glycerol.
Preservative:	Sodium azide
Precaution of Use:	This product contains Sodium azide: a POISONOUS AND HAZARDOUS SUBSTANCE which should be handled by trained staff only.
Storage:	4 °C, -20 °C
Storage Comment:	Store at 4°C for frequent use. Stored at -20°C in a manual defrost freezer for two year without detectable loss of activity. Avoid repeated freeze-thaw cycles.
Expiry Date:	24 months



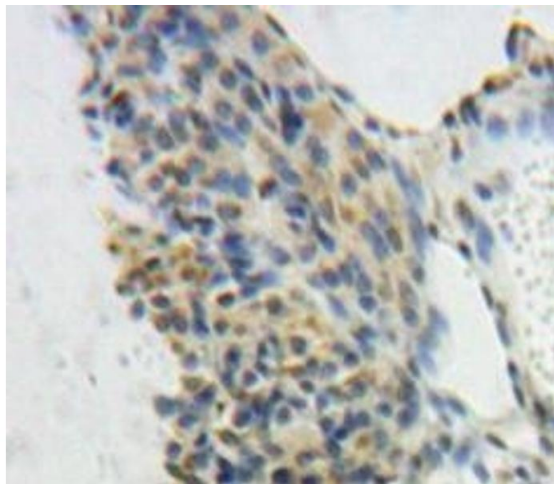
Western Blotting

Image 1. Detection of GTF2E1 in Human Jurkat cell lysate using Polyclonal Antibody to General Transcription Factor IIE, Polypeptide 1 (GTF2E1)



Western Blotting

Image 2. Detection of Recombinant GTF2E1, Human using Polyclonal Antibody to General Transcription Factor IIE, Polypeptide 1 (GTF2E1)



Immunohistochemistry

Image 3. #VALUE!

Please check the [product details page](#) for more images. Overall 4 images are available for ABIN7443038.