



[Go to Product page](#)

Datasheet for ABIN7443044

anti-Cytohesin 2 antibody (AA 1-390)

3 Images

Overview

| | |
|----------------------|--|
| Quantity: | 100 µL |
| Target: | Cytohesin 2 (CYTH2) |
| Binding Specificity: | AA 1-390 |
| Reactivity: | Human |
| Host: | Rabbit |
| Clonality: | Polyclonal |
| Conjugate: | This Cytohesin 2 antibody is un-conjugated |
| Application: | Western Blotting (WB), Immunohistochemistry (IHC), Immunoprecipitation (IP), Immunocytochemistry (ICC) |

Product Details

| | |
|---------------|--|
| Purpose: | Polyclonal Antibody to Cytohesin 2 (CYTH2) |
| Immunogen: | Recombinant Cytohesin 2 (CYTH2) corresponding to Met1~Arg390 (Accession # Q99418) |
| Isotype: | IgG |
| Specificity: | The antibody is a rabbit polyclonal antibody raised against CYTH2. It has been selected for its ability to recognize CYTH2 in immunohistochemical staining and western blotting. |
| Purification: | Antigen-specific affinity chromatography followed by Protein A affinity chromatography |

Target Details

| | |
|---------|---------------------|
| Target: | Cytohesin 2 (CYTH2) |
|---------|---------------------|

Target Details

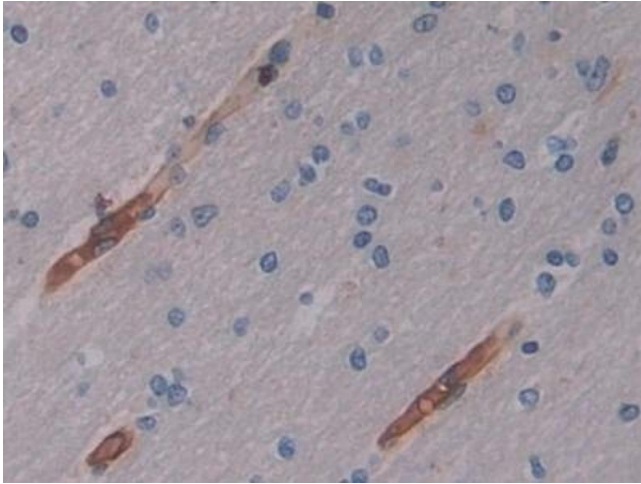
| | |
|-------------------|--|
| Alternative Name: | Cytohesin 2 (CYTH2 Products) |
| Background: | CYT2, PSCD2, ARNO, CTS18.1, PSCD2L, SEC7L, Sec7p-Like, Pleckstrin Homology,Sec7 And Coiled-Coil Domains 2, ARF exchange factor, ARF nucleotide-binding site opener |

Application Details

| | |
|--------------------|---|
| Application Notes: | Western blotting: 0.5-2 µg/mL Immunocytochemistry in formalin fixed cells: 5-20 µg/mL Immunohistochemistry in formalin fixed frozen section: 5-20 µg/mL Immunohistochemistry in paraffin section: 5-20 µg/mL Enzyme-linked Immunosorbent Assay: 0.05-2 µg/mL Optimal working dilutions must be determined by end user. |
| Comment: | The thermal stability is described by the loss rate. The loss rate was determined by accelerated thermal degradation test, that is, incubate the protein at 37°C for 48h, and no obvious degradation and precipitation were observed. The loss rate is less than 5% within the expiration date under appropriate storage condition. |
| Restrictions: | For Research Use only |

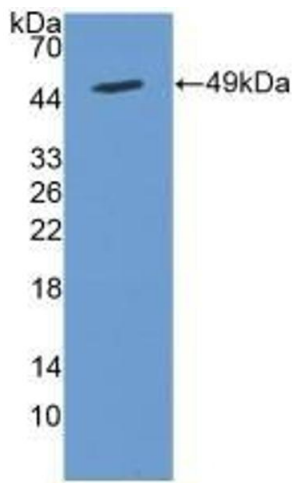
Handling

| | |
|--------------------|---|
| Format: | Liquid |
| Buffer: | PBS, pH 7.4, containing 0.02 % Sodium azide, 50 % glycerol. |
| Preservative: | Sodium azide |
| Precaution of Use: | This product contains Sodium azide: a POISONOUS AND HAZARDOUS SUBSTANCE which should be handled by trained staff only. |
| Storage: | 4 °C,-20 °C |
| Storage Comment: | Store at 4°C for frequent use. Stored at -20°C in a manual defrost freezer for two year without detectable loss of activity. Avoid repeated freeze-thaw cycles. |
| Expiry Date: | 24 months |



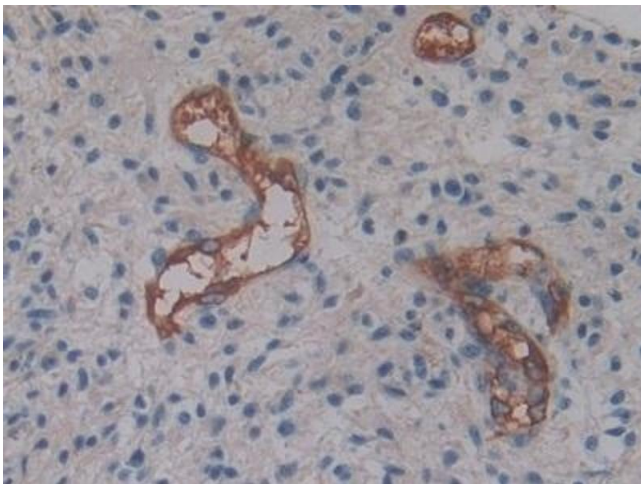
Immunohistochemistry

Image 1. Detection of CYTH2 in Human Cerebrum Tissue using Polyclonal Antibody to Cytohesin 2 (CYTH2)



Western Blotting

Image 2. Detection of Recombinant CYTH2, Human using Polyclonal Antibody to Cytohesin 2 (CYTH2)



Immunohistochemistry

Image 3. Detection of CYTH2 in Human Glioma Tissue using Polyclonal Antibody to Cytohesin 2 (CYTH2)