

Datasheet for ABIN7443065
anti-EpCAM antibody (AA 25-265)

10 Images

[Go to Product page](#)

Overview

Quantity:	100 µL
Target:	EpCAM (EPCAM)
Binding Specificity:	AA 25-265
Reactivity:	Pig
Host:	Rabbit
Clonality:	Polyclonal
Conjugate:	This EpCAM antibody is un-conjugated
Application:	Western Blotting (WB), Immunohistochemistry (IHC), Immunoprecipitation (IP), Immunocytochemistry (ICC)

Product Details

Purpose:	Polyclonal Antibody to Epithelial Cell Adhesion Molecule (EPCAM)
Immunogen:	Recombinant Epithelial Cell Adhesion Molecule (EPCAM) corresponding to Gln25~Gln265 plus (LEHHHHHH) with N-terminal His Tag
Isotype:	IgG
Specificity:	The antibody is a rabbit polyclonal antibody raised against EPCAM. It has been selected for its ability to recognize EPCAM in immunohistochemical staining and western blotting.
Purification:	Antigen-specific affinity chromatography followed by Protein A affinity chromatography

Target Details

Target:	EpCAM (EPCAM)
---------	---------------

Target Details

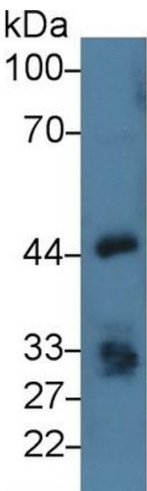
Alternative Name:	Epithelial Cell Adhesion Molecule (EPCAM Products)
Background:	CD326, TACSTD1, EGP, KSA, M4S1, MIC18, TROP1, HEGP2, ESA, Epithelial glycoprotein, Adenocarcinoma-associated antigen, Tumor Associated Calcium Signal Transducer 1

Application Details

Application Notes:	Western blotting: 0.5-3 µg/mL Immunohistochemistry: 5-30 µg/mL Immunocytochemistry: 5-30 µg/mL Optimal working dilutions must be determined by end user.
Comment:	The thermal stability is described by the loss rate. The loss rate was determined by accelerated thermal degradation test, that is, incubate the protein at 37°C for 48h, and no obvious degradation and precipitation were observed. The loss rate is less than 5% within the expiration date under appropriate storage condition.
Restrictions:	For Research Use only

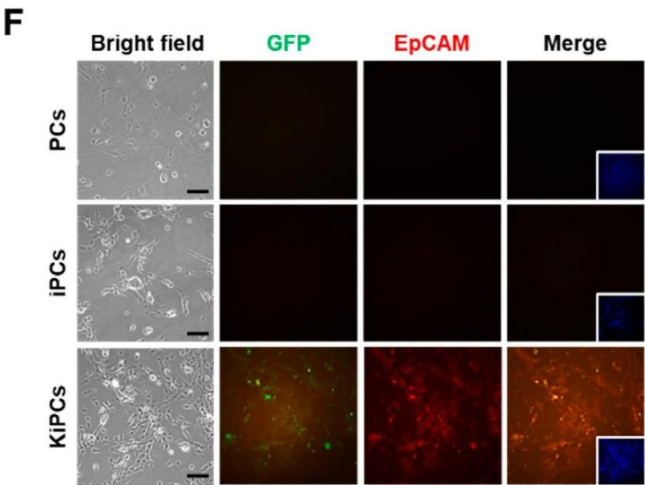
Handling

Format:	Liquid
Buffer:	PBS, pH 7.4, containing 0.02 % Sodium azide, 50 % glycerol.
Preservative:	Sodium azide
Precaution of Use:	This product contains Sodium azide: a POISONOUS AND HAZARDOUS SUBSTANCE which should be handled by trained staff only.
Storage:	4 °C,-20 °C
Storage Comment:	Store at 4°C for frequent use. Stored at -20°C in a manual defrost freezer for two year without detectable loss of activity. Avoid repeated freeze-thaw cycles.
Expiry Date:	24 months



Western Blotting

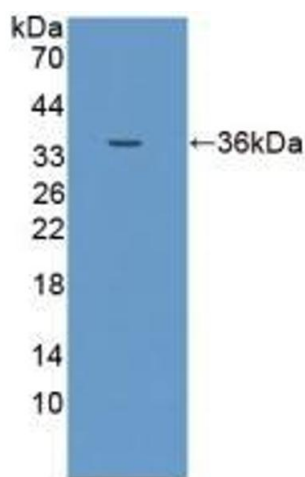
Image 1. Detection of EPCAM in Porcine Kidney lysate using Polyclonal Antibody to Epithelial Cell Adhesion Molecule (EPCAM)



Immunohistochemistry

Image 2. Gene expression analysis of pancreatic-specific markers and pancreatic cancer stem cell markers in KiPCs. (A) qPCR analysis of specific molecular markers of pancreatic acinar, ductal, and endocrine lineages in the indicated groups. (B) qPCR analysis of specific molecular markers of pancreatic acinar, ductal, and endocrine lineages after treatment with MAPK inhibitors in KiPCs #1. SP600125: 20 μ M, PD98059: 20 μ M, U0126: 10 μ M, SB203580: 10 μ M, LY294002: 10 μ M. (C) qPCR analysis of specific molecular markers of pancreatic cancer markers in the indicated groups. (D) qPCR analysis of specific molecular markers of pancreatic cancer after treatment with MAPK inhibitors in KiPCs #1. (E) Double immunofluorescence was performed by staining with anti-cytoskeletal 19 (CK19, red) and anti-GFP (green) antibodies. Scale bar = 100 μ m. (F) Double immunofluorescence was performed by staining with anti- epithelial cell adhesion molecule (EpCAM, red) and anti-GFP (green) antibodies. Scale bar = 100 μ m. Magnification 100x. All experiments were performed using at least three replicates, and the results are representative of three independent experiments. Data are presented as means \pm standard deviation. * $p < 0.05$, ** $p < 0.01$, *** $p < 0.001$, one-way analysis of variance with Holm-Sidak multiple comparisons. - figure provided by

CiteAb. Source: PMID33233448



Western Blotting

Image 3. Detection of Recombinant EPCAM, Porcine using Polyclonal Antibody to Epithelial Cell Adhesion Molecule (EPCAM)

Please check the [product details page](#) for more images. Overall 10 images are available for ABIN7443065.