

Datasheet for ABIN7443074
anti-SERPINB1 antibody (AA 17-332)

8 Images

[Go to Product page](#)

Overview

| | |
|----------------------|---|
| Quantity: | 100 µL |
| Target: | SERPINB1 |
| Binding Specificity: | AA 17-332 |
| Reactivity: | Rat |
| Host: | Rabbit |
| Clonality: | Polyclonal |
| Conjugate: | This SERPINB1 antibody is un-conjugated |
| Application: | Western Blotting (WB), Immunohistochemistry (IHC), Immunoprecipitation (IP), Immunocytochemistry (ICC) |

Product Details

| | |
|-------------------|--|
| Purpose: | Polyclonal Antibody to Leukocyte Elastase Inhibitor (LEI) |
| Immunogen: | Recombinant Leukocyte Elastase Inhibitor (LEI) corresponding to His17~Glu332 (Accession # Q4G075) |
| Isotype: | IgG |
| Specificity: | The antibody is a rabbit polyclonal antibody raised against LEI. It has been selected for its ability to recognize LEI in immunohistochemical staining and western blotting. |
| Cross-Reactivity: | Mouse |
| Purification: | Antigen-specific affinity chromatography followed by Protein A affinity chromatography |

Target Details

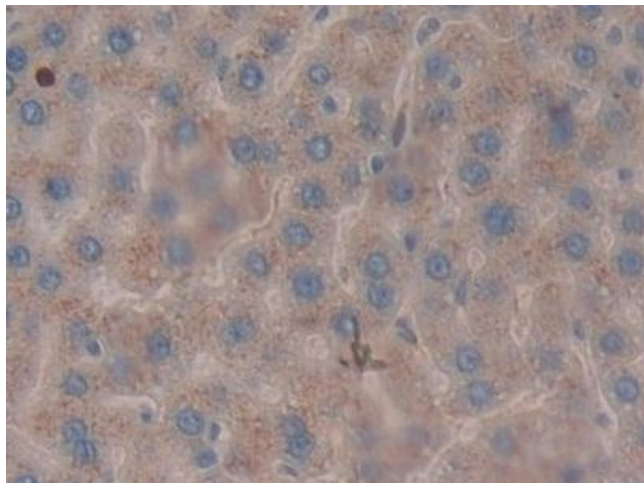
| | |
|-------------------|---|
| Target: | SERPINB1 |
| Alternative Name: | Leukocyte Elastase Inhibitor (SERPINB1 Products) |
| Background: | SERPINB1, EI, ELANH2, LEI, M/NEI, MNEI, PI2, Serpin Peptidase Inhibitor Clade B Member 1, Anti-Elastase, Monocyte/Neutrophil Elastase Inhibitor |

Application Details

| | |
|--------------------|---|
| Application Notes: | Western blotting: 0.5-2 µg/mL Immunocytochemistry in formalin fixed cells: 5-20 µg/mL Immunohistochemistry in formalin fixed frozen section: 5-20 µg/mL Immunohistochemistry in paraffin section: 5-20 µg/mL Enzyme-linked Immunosorbent Assay: 0.05-2 µg/mL Optimal working dilutions must be determined by end user. |
| Comment: | The thermal stability is described by the loss rate. The loss rate was determined by accelerated thermal degradation test, that is, incubate the protein at 37°C for 48h, and no obvious degradation and precipitation were observed. The loss rate is less than 5% within the expiration date under appropriate storage condition. |
| Restrictions: | For Research Use only |

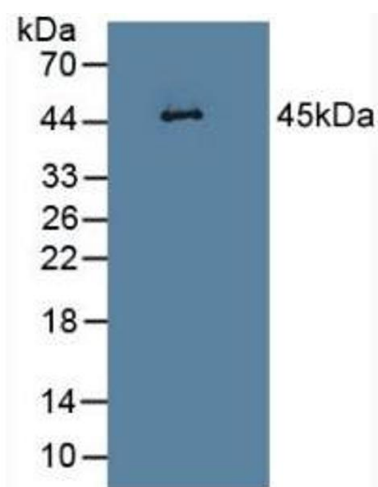
Handling

| | |
|--------------------|---|
| Format: | Liquid |
| Buffer: | 0.01M PBS, pH 7.4, containing 0.05 % Proclin-300, 50 % glycerol. |
| Preservative: | ProClin |
| Precaution of Use: | This product contains ProClin: a POISONOUS AND HAZARDOUS SUBSTANCE which should be handled by trained staff only. |
| Storage: | 4 °C,-20 °C |
| Storage Comment: | Store at 4°C for frequent use. Stored at -20°C in a manual defrost freezer for two year without detectable loss of activity. Avoid repeated freeze-thaw cycles. |
| Expiry Date: | 24 months |



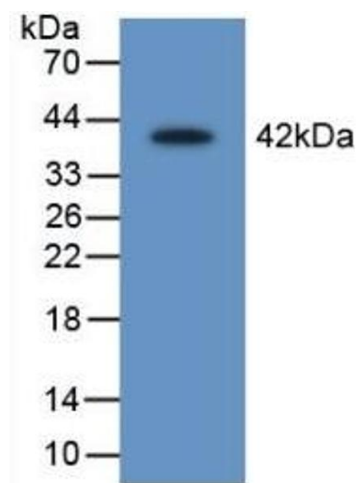
Immunohistochemistry

Image 1. Detection of LEI in Rat Liver Tissue using Polyclonal Antibody to Leukocyte Elastase Inhibitor (LEI)



Western Blotting

Image 2. Detection of LEI in Rat Heart Tissue using Polyclonal Antibody to Leukocyte Elastase Inhibitor (LEI)



Western Blotting

Image 3. Detection of Recombinant LEI, Rat using Polyclonal Antibody to Leukocyte Elastase Inhibitor (LEI)

Please check the [product details page](#) for more images. Overall 8 images are available for ABIN7443074.