

Datasheet for ABIN7443179
anti-SLC2A14 antibody (AA 1-105)

3 Images

[Go to Product page](#)

Overview

Quantity:	100 µL
Target:	SLC2A14
Binding Specificity:	AA 1-105
Reactivity:	Human
Host:	Rabbit
Clonality:	Polyclonal
Conjugate:	This SLC2A14 antibody is un-conjugated
Application:	Western Blotting (WB), Immunohistochemistry (IHC), Immunoprecipitation (IP), Immunocytochemistry (ICC)

Product Details

Purpose:	Polyclonal Antibody to Glucose Transporter 14 (GLUT14)
Immunogen:	Recombinant Glucose Transporter 14 (GLUT14) corresponding to Met1~Val105 plus LEHHHHHH with N-terminal His Tag
Isotype:	IgG
Specificity:	The antibody is a rabbit polyclonal antibody raised against GLUT14. It has been selected for its ability to recognize GLUT14 in immunohistochemical staining and western blotting.
Cross-Reactivity:	Mouse
Purification:	Antigen-specific affinity chromatography followed by Protein A affinity chromatography

Target Details

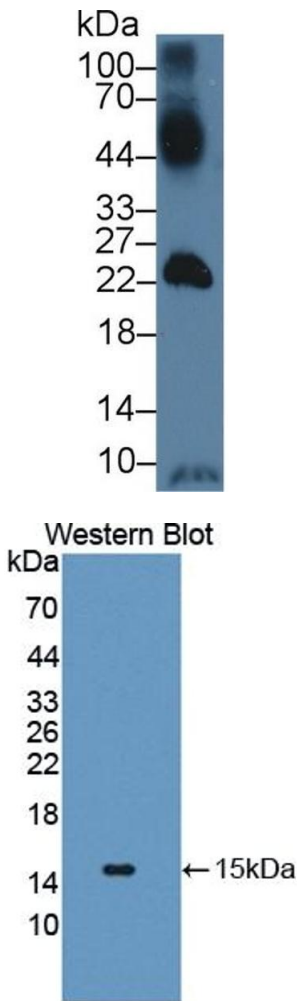
Target:	SLC2A14
Alternative Name:	Glucose Transporter 14 (SLC2A14 Products)
Background:	SLC2A14, GLUT3, Solute Carrier Family 2 Member 14, Facilitated Glucose Transporter

Application Details

Application Notes:	Western blotting: 0.5-3 µg/mL Immunohistochemistry: 5-30 µg/mL Immunocytochemistry: 5-30 µg/mL Optimal working dilutions must be determined by end user.
Comment:	The thermal stability is described by the loss rate. The loss rate was determined by accelerated thermal degradation test, that is, incubate the protein at 37°C for 48h, and no obvious degradation and precipitation were observed. The loss rate is less than 5% within the expiration date under appropriate storage condition.
Restrictions:	For Research Use only

Handling

Format:	Liquid
Buffer:	0.01M PBS, pH 7.4, containing 0.05 % Proclin-300, 50 % glycerol.
Preservative:	ProClin
Precaution of Use:	This product contains ProClin: a POISONOUS AND HAZARDOUS SUBSTANCE which should be handled by trained staff only.
Storage:	4 °C, -20 °C
Storage Comment:	Store at 4°C for frequent use. Stored at -20°C in a manual defrost freezer for two year without detectable loss of activity. Avoid repeated freeze-thaw cycles.
Expiry Date:	24 months



Western Blotting

Image 1. Detection of GLUT14 in Mouse Testis lysate using Polyclonal Antibody to Glucose Transporter 14 (GLUT14)

Western Blotting

Image 2. Detection of Recombinant GLUT14, Human using Polyclonal Antibody to Glucose Transporter 14 (GLUT14)

Immunohistochemistry

Image 3. #VALUE!

