

Datasheet for ABIN7443203
anti-Cytohesin 1 antibody (AA 1-398)

6 Images

[Go to Product page](#)

Overview

Quantity:	100 µL
Target:	Cytohesin 1 (CYTH1)
Binding Specificity:	AA 1-398
Reactivity:	Human
Host:	Rabbit
Clonality:	Polyclonal
Conjugate:	This Cytohesin 1 antibody is un-conjugated
Application:	Western Blotting (WB), Immunohistochemistry (IHC), Immunoprecipitation (IP), Immunocytochemistry (ICC)

Product Details

Purpose:	Polyclonal Antibody to Cytohesin 1 (CYTH1)
Immunogen:	Recombinant Cytohesin 1 (CYTH1) corresponding to Met1~His398 with N-terminal His Tag
Isotype:	IgG
Specificity:	The antibody is a rabbit polyclonal antibody raised against CYTH1. It has been selected for its ability to recognize CYTH1 in immunohistochemical staining and western blotting.
Cross-Reactivity:	Mouse, Pig, Rat
Purification:	Antigen-specific affinity chromatography followed by Protein A affinity chromatography

Target Details

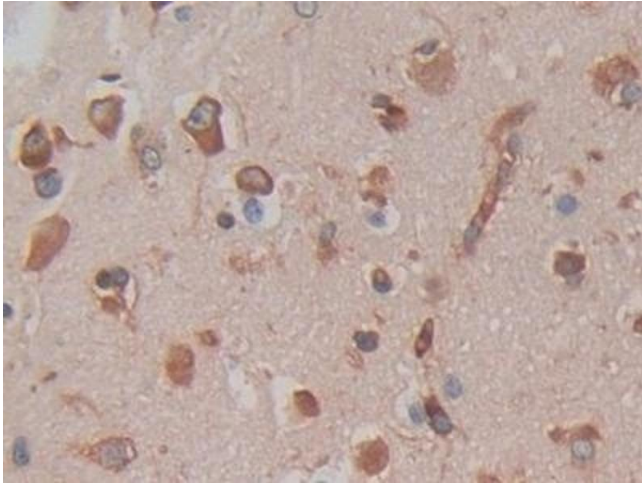
Target:	Cytohesin 1 (CYTH1)
Alternative Name:	Cytohesin 1 (CYTH1 Products)
Background:	CYT1, B2-1, SEC7, PSCD1, Pleckstrin Homology, Sec7 And Coiled-Coil Domains 1

Application Details

Application Notes:	Western blotting: 0.5-2 µg/mL 1:380-1500 Immunohistochemistry: 5-20 µg/mL 1:38-150 Immunocytochemistry: 5-20 µg/mL 1:38-150 Optimal working dilutions must be determined by end user.
Comment:	The thermal stability is described by the loss rate. The loss rate was determined by accelerated thermal degradation test, that is, incubate the protein at 37°C for 48h, and no obvious degradation and precipitation were observed. The loss rate is less than 5% within the expiration date under appropriate storage condition.
Restrictions:	For Research Use only

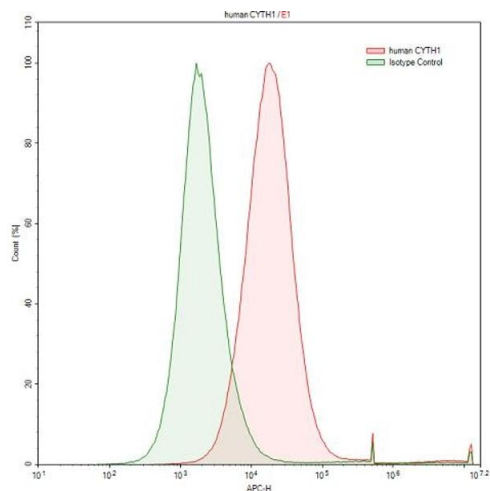
Handling

Format:	Liquid
Buffer:	PBS, pH 7.4, containing 0.02 % Sodium azide, 50 % glycerol.
Preservative:	Sodium azide
Precaution of Use:	This product contains Sodium azide: a POISONOUS AND HAZARDOUS SUBSTANCE which should be handled by trained staff only.
Storage:	4 °C, -20 °C
Storage Comment:	Store at 4°C for frequent use. Stored at -20°C in a manual defrost freezer for two year without detectable loss of activity. Avoid repeated freeze-thaw cycles.
Expiry Date:	24 months



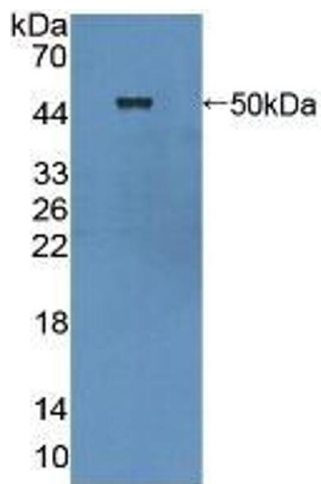
Immunohistochemistry

Image 1. Detection of CYTH1 in Human Brain Tissue using Polyclonal Antibody to Cytohesin 1 (CYTH1)



Flow Cytometry

Image 2. Detection of CYTH1 in Raji human Burkitt's lymphoma cell line using Polyclonal Antibody to Cytohesin 1 (CYTH1)



Western Blotting

Image 3. Detection of Recombinant CYTH1, Human using Polyclonal Antibody to Cytohesin 1 (CYTH1)

Please check the [product details page](#) for more images. Overall 6 images are available for ABIN7443203.