

Datasheet for ABIN7443224  
**anti-BAD antibody (AA 1-168)**[Go to Product page](#)

## 8 Images

## Overview

Quantity:	100 µL
Target:	BAD
Binding Specificity:	AA 1-168
Reactivity:	Human
Host:	Rabbit
Clonality:	Polyclonal
Conjugate:	This BAD antibody is un-conjugated
Application:	Western Blotting (WB), Immunohistochemistry (IHC), Immunocytochemistry (ICC), Immunoprecipitation (IP)

## Product Details

Purpose:	Polyclonal Antibody to Bcl2 Associated Death Promoter (BAD)
Immunogen:	Recombinant Bcl2 Associated Death Promoter (BAD) corresponding to Met1~Gln168 (Accession # Q92934)
Isotype:	IgG
Specificity:	The antibody is a rabbit polyclonal antibody raised against BAD. It has been selected for its ability to recognize BAD in immunohistochemical staining and western blotting.
Purification:	Antigen-specific affinity chromatography followed by Protein A affinity chromatography

## Target Details

Target:	BAD
---------	-----

## Target Details

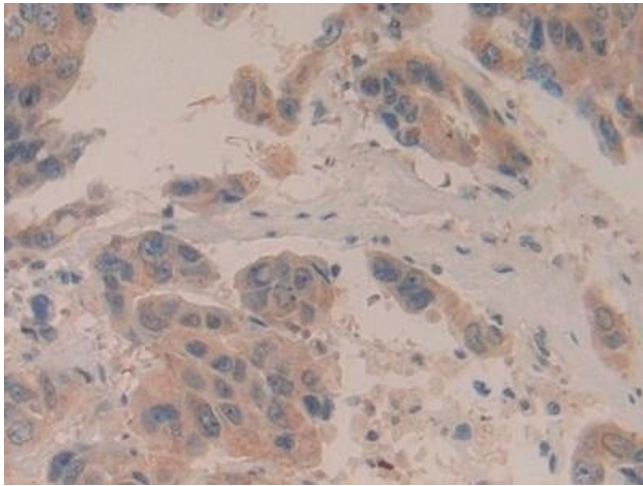
Alternative Name:	Bcl2 Associated Death Promoter ( <a href="#">BAD Products</a> )
Background:	BBC2, BCL2L8, BCL2-Antagonist Of Cell Death, Bcl-2-binding component 6, Bcl-2-like protein 8, Bcl-xL/Bcl-2-associated death promoter, Bcl2 antagonist of cell death
Pathways:	<a href="#">MAPK Signaling</a> , <a href="#">PI3K-Akt Signaling</a> , <a href="#">RTK Signaling</a> , <a href="#">Apoptosis</a> , <a href="#">Fc-epsilon Receptor Signaling Pathway</a> , <a href="#">Positive Regulation of Peptide Hormone Secretion</a> , <a href="#">Carbohydrate Homeostasis</a> , <a href="#">Positive Regulation of Endopeptidase Activity</a> , <a href="#">Regulation of Carbohydrate Metabolic Process</a> , <a href="#">Hepatitis C</a> , <a href="#">CXCR4-mediated Signaling Events</a>

## Application Details

Application Notes:	Western blotting: 0.5-2 µg/mL Immunohistochemistry: 5-20 µg/mL Immunocytochemistry: 5-20 µg/mL Optimal working dilutions must be determined by end user.
Comment:	The thermal stability is described by the loss rate. The loss rate was determined by accelerated thermal degradation test, that is, incubate the protein at 37°C for 48h, and no obvious degradation and precipitation were observed. The loss rate is less than 5% within the expiration date under appropriate storage condition.
Restrictions:	For Research Use only

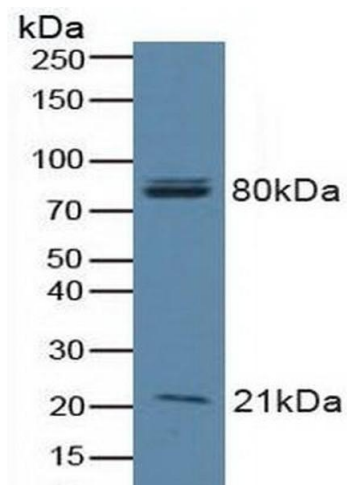
## Handling

Format:	Liquid
Buffer:	0.01M PBS, pH 7.4, containing 0.05 % Proclin-300, 50 % glycerol.
Preservative:	ProClin
Precaution of Use:	This product contains ProClin: a POISONOUS AND HAZARDOUS SUBSTANCE which should be handled by trained staff only.
Storage:	4 °C,-20 °C
Storage Comment:	Store at 4°C for frequent use. Stored at -20°C in a manual defrost freezer for two year without detectable loss of activity. Avoid repeated freeze-thaw cycles.
Expiry Date:	24 months



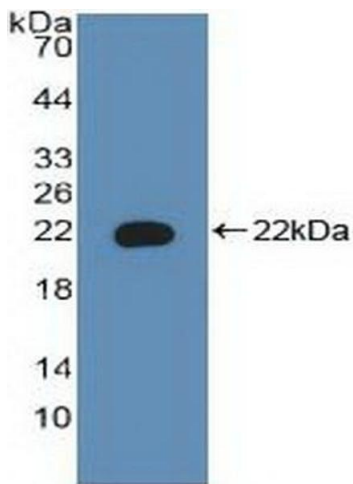
#### Immunohistochemistry

**Image 1.** Detection of BAD in Human Breast cancer Tissue using Polyclonal Antibody to Bcl2 Associated Death Promoter (BAD)



#### Western Blotting

**Image 2.** Detection of BAD in Human A549 Cells using Polyclonal Antibody to Bcl2 Associated Death Promoter (BAD)



#### Western Blotting

**Image 3.** Detection of Recombinant BAD, Human using Polyclonal Antibody to Bcl2 Associated Death Promoter (BAD)

Please check the [product details page](#) for more images. Overall 8 images are available for ABIN7443224.