

Datasheet for ABIN7443227

anti-Intrinsic Factor antibody (AA 31-288)**2** Images[Go to Product page](#)

Overview

Quantity:	100 µL
Target:	Intrinsic Factor (GIF)
Binding Specificity:	AA 31-288
Reactivity:	Mouse
Host:	Rabbit
Clonality:	Polyclonal
Conjugate:	This Intrinsic Factor antibody is un-conjugated
Application:	Western Blotting (WB), Immunohistochemistry (IHC), Immunoprecipitation (IP), Immunocytochemistry (ICC)

Product Details

Purpose:	Polyclonal Antibody to Gastric Intrinsic Factor (GIF)
Immunogen:	Recombinant Gastric Intrinsic Factor (GIF) corresponding to Asp31~Cys288 (Accession # P52787)
Isotype:	IgG
Specificity:	The antibody is a rabbit polyclonal antibody raised against GIF. It has been selected for its ability to recognize GIF in immunohistochemical staining and western blotting.
Cross-Reactivity:	Rat
Purification:	Antigen-specific affinity chromatography followed by Protein A affinity chromatography

Target Details

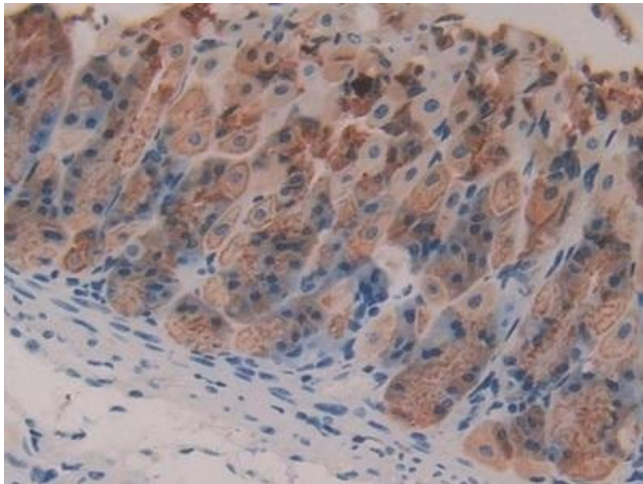
Target:	Intrinsic Factor (GIF)
Alternative Name:	Gastric Intrinsic Factor (GIF Products)
Background:	TCN3, IF, IFMH, INF, Transcobalamin III, Vitamin B Synthesis

Application Details

Application Notes:	Western blotting: 0.5-2 µg/mL Immunohistochemistry: 5-20 µg/mL Immunocytochemistry: 5-20 µg/mL Optimal working dilutions must be determined by end user.
Comment:	The thermal stability is described by the loss rate. The loss rate was determined by accelerated thermal degradation test, that is, incubate the protein at 37°C for 48h, and no obvious degradation and precipitation were observed. The loss rate is less than 5% within the expiration date under appropriate storage condition.
Restrictions:	For Research Use only

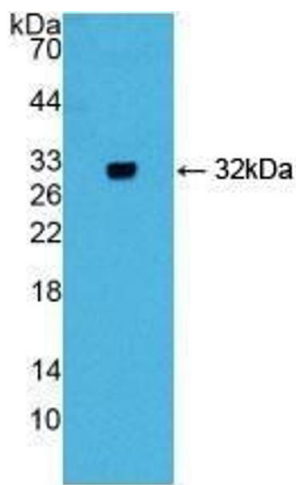
Handling

Format:	Liquid
Buffer:	0.01M PBS, pH 7.4, containing 0.05 % Proclin-300, 50 % glycerol.
Preservative:	ProClin
Precaution of Use:	This product contains ProClin: a POISONOUS AND HAZARDOUS SUBSTANCE which should be handled by trained staff only.
Storage:	4 °C,-20 °C
Storage Comment:	Store at 4°C for frequent use. Stored at -20°C in a manual defrost freezer for two year without detectable loss of activity. Avoid repeated freeze-thaw cycles.
Expiry Date:	24 months



Immunohistochemistry

Image 1. Detection of GIF in Mouse Stomach Tissue using Polyclonal Antibody to Gastric Intrinsic Factor (GIF)



Western Blotting

Image 2. Detection of Recombinant GIF, Mouse using Polyclonal Antibody to Gastric Intrinsic Factor (GIF)