



[Go to Product page](#)

Datasheet for ABIN7443257
anti-TREH antibody (AA 237-420)

3 Images

Overview

Quantity:	100 µL
Target:	TREH
Binding Specificity:	AA 237-420
Reactivity:	Human
Host:	Rabbit
Clonality:	Polyclonal
Conjugate:	This TREH antibody is un-conjugated
Application:	Western Blotting (WB), Immunohistochemistry (IHC), Immunoprecipitation (IP), Immunocytochemistry (ICC)

Product Details

Purpose:	Polyclonal Antibody to Trehalase (TREH)
Immunogen:	Recombinant Trehalase (TREH) corresponding to His237~Pro420 (Accession # O43280)
Isotype:	IgG
Specificity:	The antibody is a rabbit polyclonal antibody raised against TREH. It has been selected for its ability to recognize TREH in immunohistochemical staining and western blotting.
Cross-Reactivity:	Mouse
Purification:	Antigen-specific affinity chromatography followed by Protein A affinity chromatography

Target Details

Target:	TREH
Alternative Name:	Trehalase (TREH Products)
Background:	TRE, TREA, Brush Border Membrane Glycoprotein, Alpha,Alpha-Trehalase, Alpha,Alpha-Trehalose Glucohydrolase

Application Details

Application Notes:	Western blotting: 0.5-2 µg/mL 1:270-1100 Immunohistochemistry: 5-20 µg/mL 1:27-110 Immunocytochemistry: 5-20 µg/mL 1:27-110 Optimal working dilutions must be determined by end user.
Comment:	The thermal stability is described by the loss rate. The loss rate was determined by accelerated thermal degradation test, that is, incubate the protein at 37°C for 48h, and no obvious degradation and precipitation were observed. The loss rate is less than 5% within the expiration date under appropriate storage condition.
Restrictions:	For Research Use only

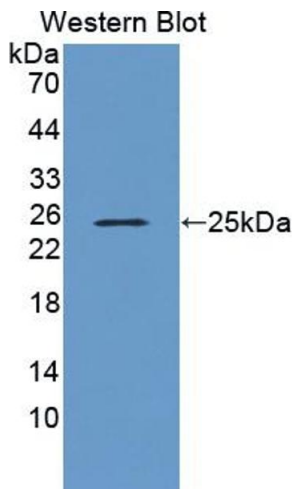
Handling

Format:	Liquid
Buffer:	0.01M PBS, pH 7.4, containing 0.05 % Proclin-300, 50 % glycerol.
Preservative:	ProClin
Precaution of Use:	This product contains ProClin: a POISONOUS AND HAZARDOUS SUBSTANCE which should be handled by trained staff only.
Storage:	4 °C,-20 °C
Storage Comment:	Store at 4°C for frequent use. Stored at -20°C in a manual defrost freezer for two year without detectable loss of activity. Avoid repeated freeze-thaw cycles.
Expiry Date:	24 months



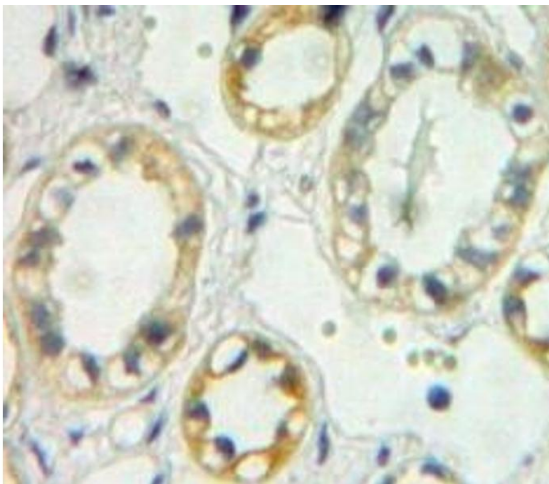
Western Blotting

Image 1. Detection of TREH in Mouse Small intestine lysate using Polyclonal Antibody to Trehalase (TREH)



Western Blotting

Image 2. Detection of Recombinant TREH, Human using Polyclonal Antibody to Trehalase (TREH)



Immunohistochemistry

Image 3. #VALUE!