

Datasheet for ABIN7443299
anti-Keratin 6C antibody (AA 163-482)[Go to Product page](#)

7 Images

Overview

Quantity:	100 µL
Target:	Keratin 6C (KRT6C)
Binding Specificity:	AA 163-482
Reactivity:	Human
Host:	Rabbit
Clonality:	Polyclonal
Conjugate:	This Keratin 6C antibody is un-conjugated
Application:	Immunohistochemistry (IHC), Western Blotting (WB), Immunoprecipitation (IP), Immunocytochemistry (ICC)

Product Details

Purpose:	Polyclonal Antibody to Keratin 6C (KRT6C)
Immunogen:	Recombinant Keratin 6C (KRT6C) corresponding to Glu163~Gly482 (Accession # P48668)
Isotype:	IgG
Specificity:	The antibody is a rabbit polyclonal antibody raised against KRT6C. It has been selected for its ability to recognize KRT6C in immunohistochemical staining and western blotting.
Purification:	Antigen-specific affinity chromatography followed by Protein A affinity chromatography

Target Details

Target:	Keratin 6C (KRT6C)
---------	--------------------

Target Details

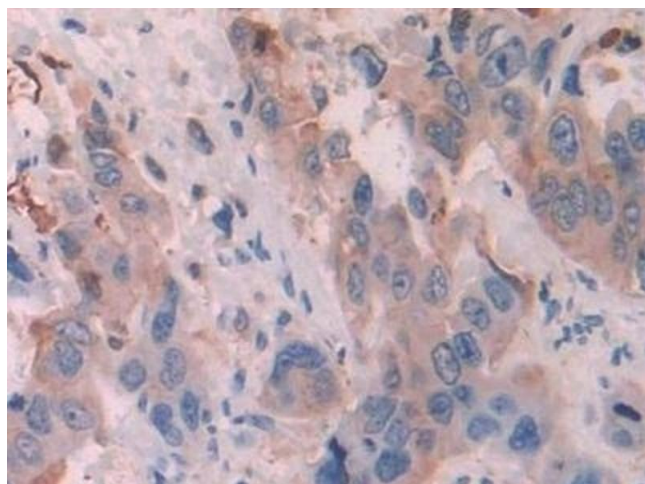
Alternative Name:	Keratin 6C (KRT6C Products)
Background:	KRT6E, Keratin 6E, Keratin, type II cytoskeletal 6C, Cytokeratin-6C, Type-II keratin Kb12

Application Details

Application Notes:	Western blotting: 0.5-2 µg/mL Immunohistochemistry: 5-20 µg/mL Immunocytochemistry: 5-20 µg/mL Optimal working dilutions must be determined by end user.
Comment:	The thermal stability is described by the loss rate. The loss rate was determined by accelerated thermal degradation test, that is, incubate the protein at 37°C for 48h, and no obvious degradation and precipitation were observed. The loss rate is less than 5% within the expiration date under appropriate storage condition.
Restrictions:	For Research Use only

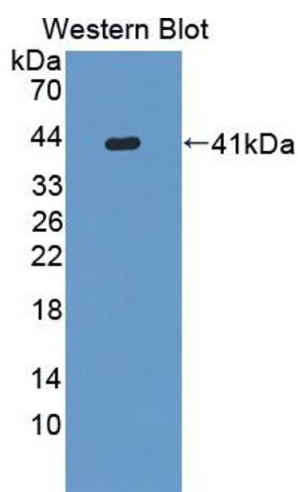
Handling

Format:	Liquid
Buffer:	PBS, pH 7.4, containing 0.02 % Sodium azide, 50 % glycerol.
Preservative:	Sodium azide
Precaution of Use:	This product contains Sodium azide: a POISONOUS AND HAZARDOUS SUBSTANCE which should be handled by trained staff only.
Storage:	4 °C,-20 °C
Storage Comment:	Store at 4°C for frequent use. Stored at -20°C in a manual defrost freezer for two year without detectable loss of activity. Avoid repeated freeze-thaw cycles.
Expiry Date:	24 months



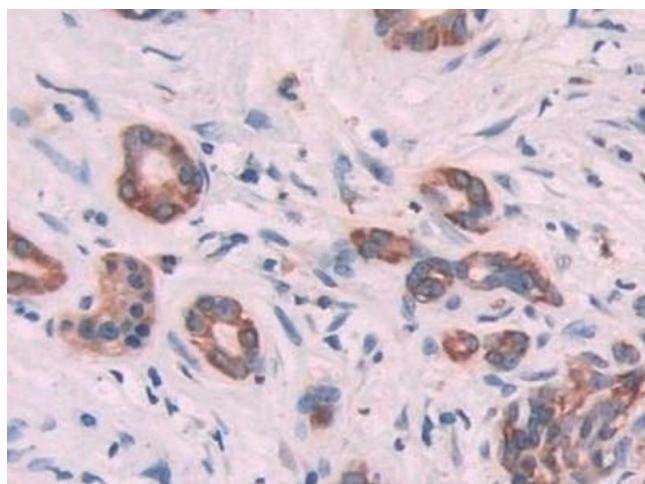
Immunohistochemistry

Image 1. Detection of KRT6C in Human Breast cancer Tissue using Polyclonal Antibody to Keratin 6C (KRT6C)



Western Blotting

Image 2. Detection of Recombinant KRT6C, Human using Polyclonal Antibody to Keratin 6C (KRT6C)



Immunohistochemistry

Image 3. Detection of KRT6C in Human Pancreatic cancer Tissue using Polyclonal Antibody to Keratin 6C (KRT6C)

Please check the [product details page](#) for more images. Overall 7 images are available for ABIN7443299.