

Datasheet for ABIN7443311

anti-Prolactin Receptor antibody (AA 25-234)

8 Images

[Go to Product page](#)

Overview

Quantity:	100 µL
Target:	Prolactin Receptor (PRLR)
Binding Specificity:	AA 25-234
Reactivity:	Human
Host:	Rabbit
Clonality:	Polyclonal
Conjugate:	This Prolactin Receptor antibody is un-conjugated
Application:	Western Blotting (WB), Immunohistochemistry (IHC), Immunoprecipitation (IP), Immunocytochemistry (ICC)

Product Details

Purpose:	Polyclonal Antibody to Prolactin Receptor (PRLR)
Immunogen:	Recombinant Prolactin Receptor (PRLR) corresponding to Gln25~Asp234 (Accession # P16471)
Isotype:	IgG
Specificity:	The antibody is a rabbit polyclonal antibody raised against PRLR. It has been selected for its ability to recognize PRLR in immunohistochemical staining and western blotting.
Cross-Reactivity:	Mouse, Pig, Rat
Purification:	Antigen-specific affinity chromatography followed by Protein A affinity chromatography

Target Details

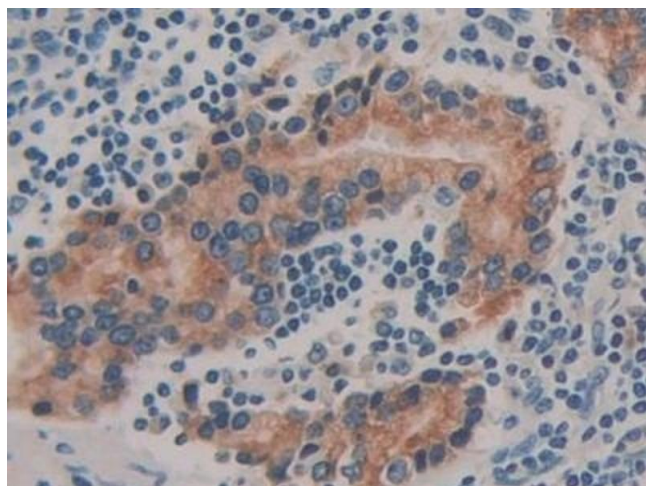
Target:	Prolactin Receptor (PRLR)
Alternative Name:	Prolactin Receptor (PRLR Products)
Pathways:	JAK-STAT Signaling , Response to Growth Hormone Stimulus

Application Details

Application Notes:	Western blotting: 0.5-2 µg/mL Immunohistochemistry: 5-20 µg/mL Immunocytochemistry: 5-20 µg/mL Optimal working dilutions must be determined by end user.
Comment:	The thermal stability is described by the loss rate. The loss rate was determined by accelerated thermal degradation test, that is, incubate the protein at 37°C for 48h, and no obvious degradation and precipitation were observed. The loss rate is less than 5% within the expiration date under appropriate storage condition.
Restrictions:	For Research Use only

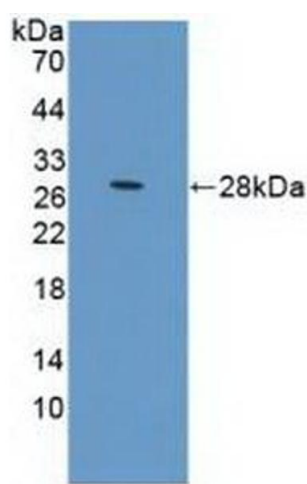
Handling

Format:	Liquid
Buffer:	0.01M PBS, pH 7.4, containing 0.05 % Proclin-300, 50 % glycerol.
Preservative:	ProClin
Precaution of Use:	This product contains ProClin: a POISONOUS AND HAZARDOUS SUBSTANCE which should be handled by trained staff only.
Storage:	4 °C,-20 °C
Storage Comment:	Store at 4°C for frequent use. Stored at -20°C in a manual defrost freezer for two year without detectable loss of activity. Avoid repeated freeze-thaw cycles.
Expiry Date:	24 months



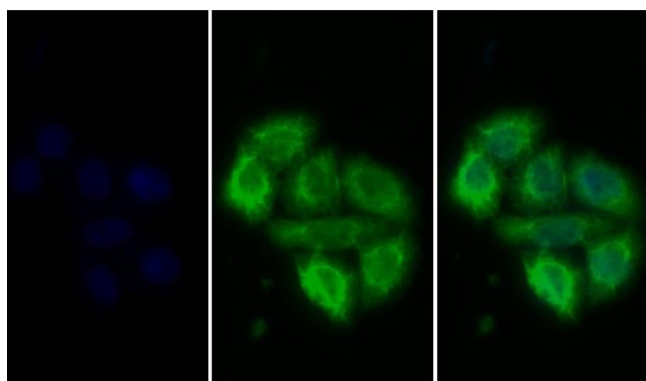
Immunohistochemistry

Image 1. Detection of PRLR in Human Prostate cancer Tissue using Polyclonal Antibody to Prolactin Receptor (PRLR)



Western Blotting

Image 2. Detection of Recombinant PRLR, Human using Polyclonal Antibody to Prolactin Receptor (PRLR)



Immunofluorescence

Image 3. Detection of PRLR in Human MCF7 cell using Polyclonal Antibody to Prolactin Receptor (PRLR)

Please check the [product details page](#) for more images. Overall 8 images are available for ABIN7443311.