

Datasheet for ABIN7443380
anti-PANX1 antibody (AA 228-411)[Go to Product page](#)

4 Images

Overview

Quantity:	100 µL
Target:	PANX1
Binding Specificity:	AA 228-411
Reactivity:	Human
Host:	Rabbit
Clonality:	Polyclonal
Conjugate:	This PANX1 antibody is un-conjugated
Application:	Western Blotting (WB), Immunohistochemistry (IHC), Immunoprecipitation (IP), Immunocytochemistry (ICC)

Product Details

Purpose:	Polyclonal Antibody to Pannexin 1 (PANX1)
Immunogen:	Recombinant Pannexin 1 (PANX1) corresponding to Cys228~Asn411 (Accession # Q96RD7)
Isotype:	IgG
Specificity:	The antibody is a rabbit polyclonal antibody raised against PANX1. It has been selected for its ability to recognize PANX1 in immunohistochemical staining and western blotting.
Purification:	Antigen-specific affinity chromatography followed by Protein A affinity chromatography

Target Details

Target:	PANX1
---------	-------

Target Details

Alternative Name: Pannexin 1 ([PANX1 Products](#))

Background: MRS1, PX1, Innexin

Application Details

Application Notes: Western blotting: 0.5-2 µg/mL
Immunohistochemistry: 5-20 µg/mL
Immunocytochemistry: 5-20 µg/mL
Optimal working dilutions must be determined by end user.

Comment: The thermal stability is described by the loss rate. The loss rate was determined by accelerated thermal degradation test, that is, incubate the protein at 37°C for 48h, and no obvious degradation and precipitation were observed. The loss rate is less than 5% within the expiration date under appropriate storage condition.

Restrictions: For Research Use only

Handling

Format: Liquid

Buffer: PBS, pH 7.4, containing 0.02 % Sodium azide, 50 % glycerol.

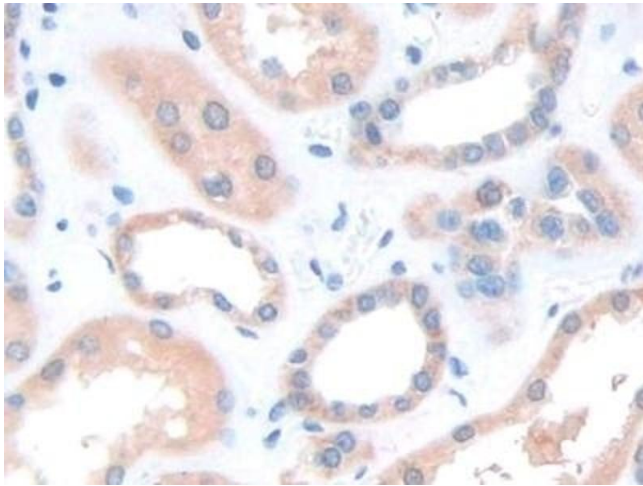
Preservative: Sodium azide

Precaution of Use: This product contains Sodium azide: a POISONOUS AND HAZARDOUS SUBSTANCE which should be handled by trained staff only.

Storage: 4 °C, -20 °C

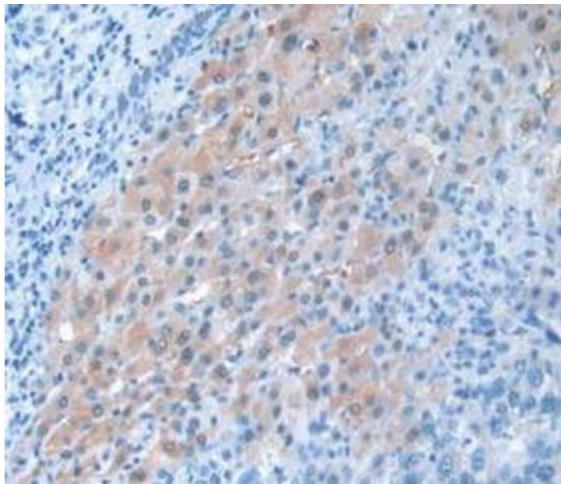
Storage Comment: Store at 4°C for frequent use. Stored at -20°C in a manual defrost freezer for two year without detectable loss of activity. Avoid repeated freeze-thaw cycles.

Expiry Date: 24 months



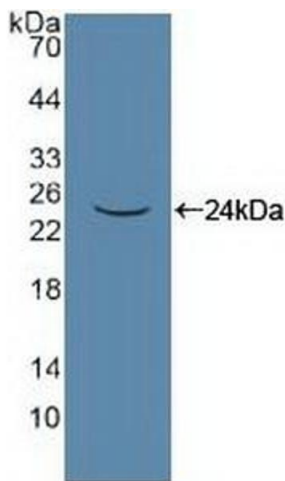
Immunohistochemistry

Image 1. Detection of PANX1 in Human Kidney Tissue using Polyclonal Antibody to Pannexin 1 (PANX1)



Immunohistochemistry

Image 2. Detection of PANX1 in Human Liver Cancer Tissue using Polyclonal Antibody to Pannexin 1 (PANX1)



Western Blotting

Image 3. Detection of Recombinant PANX1, Human using Polyclonal Antibody to Pannexin 1 (PANX1)

Please check the [product details page](#) for more images. Overall 4 images are available for ABIN7443380.