

Datasheet for ABIN7443389

anti-PLA2R1 antibody (AA 1418-1487)

9 Images

[Go to Product page](#)

Overview

Quantity:	100 µL
Target:	PLA2R1
Binding Specificity:	AA 1418-1487
Reactivity:	Mouse
Host:	Rabbit
Clonality:	Polyclonal
Conjugate:	This PLA2R1 antibody is un-conjugated
Application:	Western Blotting (WB), Immunohistochemistry (IHC), Immunocytochemistry (ICC), Immunoprecipitation (IP)

Product Details

Purpose:	Polyclonal Antibody to Phospholipase A2 Receptor 1 (PLA2R1)
Immunogen:	Recombinant Phospholipase A2 Receptor 1 (PLA2R1) corresponding to Trp1418~Pro1487 (Accession # Q62028) with N-terminal His and GST Tag
Isotype:	IgG
Specificity:	The antibody is a rabbit polyclonal antibody raised against PLA2R1. It has been selected for its ability to recognize PLA2R1 in immunohistochemical staining and western blotting.
Purification:	Antigen-specific affinity chromatography followed by Protein A affinity chromatography

Target Details

Target:	PLA2R1
---------	--------

Target Details

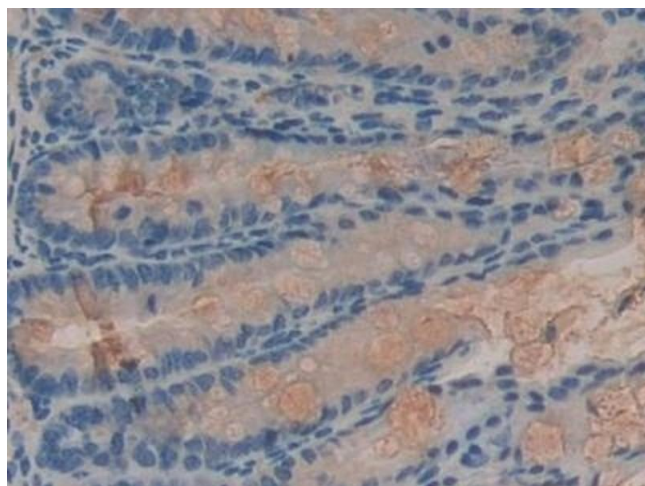
Alternative Name:	Phospholipase A2 Receptor 1 (PLA2R1 Products)
Background:	CLEC13C, PLA2G1R, PLA2IR, PLA2R, 180 kDa secretory phospholipase A2 receptor, C-type lectin domain family 13 member C, Soluble secretory phospholipase A2 receptor
Pathways:	Positive Regulation of Response to DNA Damage Stimulus

Application Details

Application Notes:	Western blotting: 0.5-2 µg/mL 1:250-1000 Immunohistochemistry: 5-20 µg/mL 1:25-100 Immunocytochemistry: 5-20 µg/mL 1:25-100 Optimal working dilutions must be determined by end user.
Comment:	The thermal stability is described by the loss rate. The loss rate was determined by accelerated thermal degradation test, that is, incubate the protein at 37°C for 48h, and no obvious degradation and precipitation were observed. The loss rate is less than 5% within the expiration date under appropriate storage condition.
Restrictions:	For Research Use only

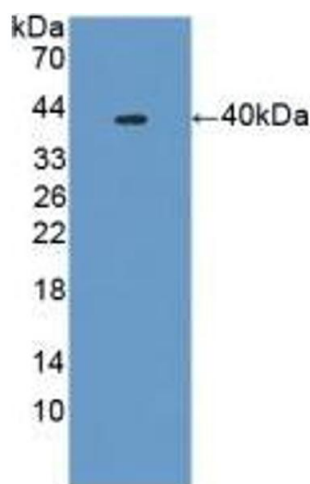
Handling

Format:	Liquid
Buffer:	0.01M PBS, pH 7.4, containing 0.05 % Proclin-300, 50 % glycerol.
Preservative:	ProClin
Precaution of Use:	This product contains ProClin: a POISONOUS AND HAZARDOUS SUBSTANCE which should be handled by trained staff only.
Storage:	4 °C, -20 °C
Storage Comment:	Store at 4°C for frequent use. Stored at -20°C in a manual defrost freezer for two year without detectable loss of activity. Avoid repeated freeze-thaw cycles.
Expiry Date:	24 months



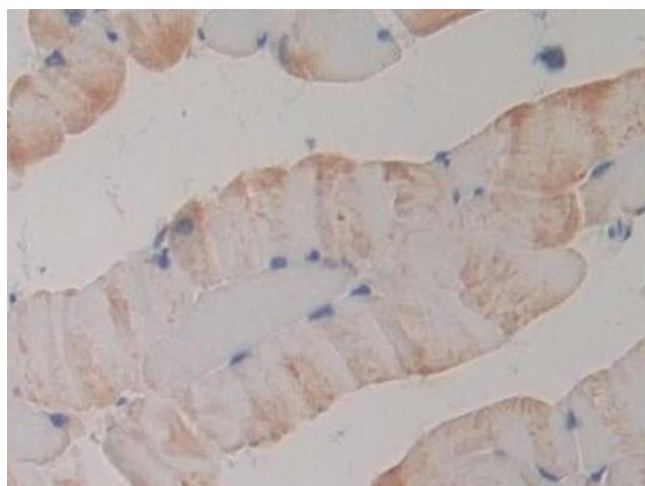
Immunohistochemistry

Image 1. Detection of PLA2R1 in Mouse Intestine Tissue using Polyclonal Antibody to Phospholipase A2 Receptor 1 (PLA2R1)



Western Blotting

Image 2. Detection of Recombinant PLA2R1, Mouse using Polyclonal Antibody to Phospholipase A2 Receptor 1 (PLA2R1)



Immunohistochemistry

Image 3. Detection of PLA2R1 in Mouse Skeletal muscle Tissue using Polyclonal Antibody to Phospholipase A2 Receptor 1 (PLA2R1)

Please check the [product details page](#) for more images. Overall 9 images are available for ABIN7443389.