



[Go to Product page](#)

Datasheet for ABIN7443401

## anti-MPEG1 antibody (AA 41-313)

### 2 Images

#### Overview

Quantity:	100 µL
Target:	MPEG1
Binding Specificity:	AA 41-313
Reactivity:	Mouse
Host:	Rabbit
Clonality:	Polyclonal
Conjugate:	This MPEG1 antibody is un-conjugated
Application:	Western Blotting (WB), Immunohistochemistry (IHC), Immunoprecipitation (IP), Immunocytochemistry (ICC)

#### Product Details

Purpose:	Polyclonal Antibody to Macrophage Expressed Gene 1 Protein (MPG1)
Immunogen:	Recombinant Macrophage Expressed Gene 1 Protein (MPG1) corresponding to Cys41~Ala313
Isotype:	IgG
Specificity:	The antibody is a rabbit polyclonal antibody raised against MPG1. It has been selected for its ability to recognize MPG1 in immunohistochemical staining and western blotting.
Cross-Reactivity:	Rat
Purification:	Antigen-specific affinity chromatography followed by Protein A affinity chromatography

## Target Details

---

Target:	MPEG1
Alternative Name:	Macrophage Expressed Gene 1 Protein ( <a href="#">MPEG1 Products</a> )
Background:	MPEG1

## Application Details

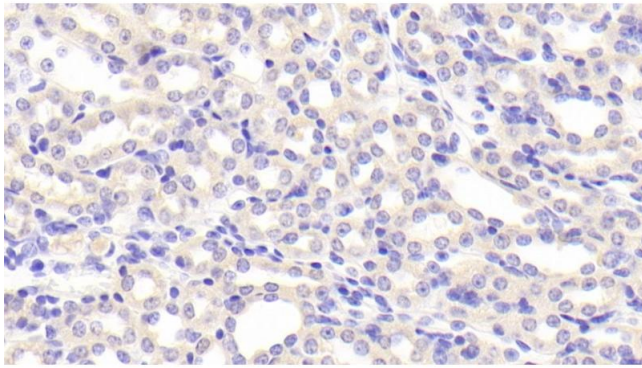
---

Application Notes:	Western blotting: 0.5-2 µg/mL Immunohistochemistry: 5-20 µg/mL Immunocytochemistry: 5-20 µg/mL Optimal working dilutions must be determined by end user.
Comment:	The thermal stability is described by the loss rate. The loss rate was determined by accelerated thermal degradation test, that is, incubate the protein at 37°C for 48h, and no obvious degradation and precipitation were observed. The loss rate is less than 5% within the expiration date under appropriate storage condition.
Restrictions:	For Research Use only

## Handling

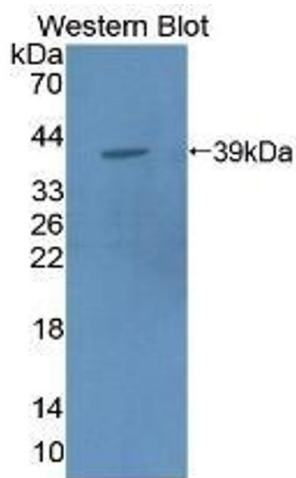
---

Format:	Liquid
Buffer:	PBS, pH 7.4, containing 0.02 % Sodium azide, 50 % glycerol.
Preservative:	Sodium azide
Precaution of Use:	This product contains Sodium azide: a POISONOUS AND HAZARDOUS SUBSTANCE which should be handled by trained staff only.
Storage:	4 °C,-20 °C
Storage Comment:	Store at 4°C for frequent use. Stored at -20°C in a manual defrost freezer for two year without detectable loss of activity. Avoid repeated freeze-thaw cycles.
Expiry Date:	24 months



### Immunohistochemistry

**Image 1.** Detection of MPG1 in Mouse Kidney Tissue using Polyclonal Antibody to Macrophage Expressed Gene 1 Protein (MPG1)



### Western Blotting

**Image 2.** Detection of Recombinant MPG1, Mouse using Polyclonal Antibody to Macrophage Expressed Gene 1 Protein (MPG1)