

Datasheet for ABIN7443467  
**anti-ASCL1 antibody (AA 84-236)**



[Go to Product page](#)

2 Images

## Overview

Quantity:	100 µL
Target:	ASCL1
Binding Specificity:	AA 84-236
Reactivity:	Human
Host:	Rabbit
Clonality:	Polyclonal
Conjugate:	This ASCL1 antibody is un-conjugated
Application:	Western Blotting (WB), Immunohistochemistry (IHC), Immunocytochemistry (ICC), Immunoprecipitation (IP)

## Product Details

Purpose:	Polyclonal Antibody to Achaete Scute Complex Like Protein 1 (ASCL1)
Immunogen:	Recombinant Achaete Scute Complex Like Protein 1 (ASCL1) corresponding to Lys84~Phe236 with N-terminal His Tag
Isotype:	IgG
Specificity:	The antibody is a rabbit polyclonal antibody raised against ASCL1. It has been selected for its ability to recognize ASCL1 in immunohistochemical staining and western blotting.
Purification:	Antigen-specific affinity chromatography followed by Protein A affinity chromatography

## Target Details

Target:	ASCL1
---------	-------

## Target Details

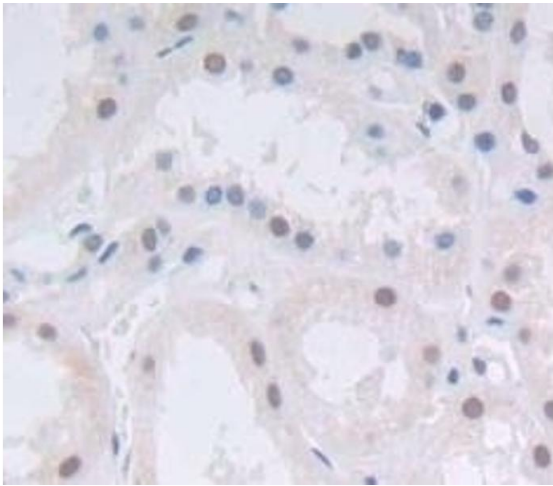
Alternative Name:	ASCL1 ( <a href="#">ASCL1 Products</a> )
Background:	ASH1, HASH1, MASH1, BHLHA46, Achaete Scute Homolog 1, Class A basic helix-loop-helix protein 46
UniProt:	<a href="#">P50553</a>
Pathways:	<a href="#">Dopaminergic Neurogenesis</a>

## Application Details

Application Notes:	Western blotting: 0.01-2 µg/mL, Immunohistochemistry: 5-20 µg/mL, Immunocytochemistry: 5-20 µg/mL, Optimal working dilutions must be determined by end user.
Comment:	The thermal stability is described by the loss rate. The loss rate was determined by accelerated thermal degradation test, that is, incubate the protein at 37°C for 48h, and no obvious degradation and precipitation were observed. The loss rate is less than 5% within the expiration date under appropriate storage condition.
Restrictions:	For Research Use only

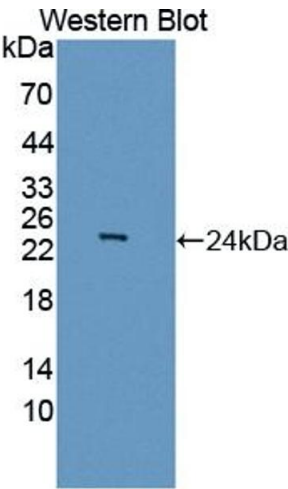
## Handling

Format:	Liquid
Concentration:	0.5 mg/mL
Buffer:	PBS, pH 7.4, containing 0.02 % Sodium azide, 50 % glycerol.
Preservative:	Sodium azide
Precaution of Use:	This product contains Sodium azide: a POISONOUS AND HAZARDOUS SUBSTANCE which should be handled by trained staff only.
Storage:	4 °C, -20 °C
Storage Comment:	Store at 4°C for frequent use. Stored at -20°C in a manual defrost freezer for two year without detectable loss of activity. Avoid repeated freeze-thaw cycles.
Expiry Date:	24 months



Immunohistochemistry

Image 1. #VALUE!



Western Blotting

Image 2. Detection of Recombinant ASCL1, Human using Polyclonal Antibody to Achaete Scute Complex Like Protein 1 (ASCL1)