

Datasheet for ABIN7443518
anti-PPP3R1 antibody (AA 2-170)



[Go to Product page](#)

2 Images

Overview

Quantity:	100 µL
Target:	PPP3R1
Binding Specificity:	AA 2-170
Reactivity:	Human
Host:	Rabbit
Clonality:	Polyclonal
Conjugate:	This PPP3R1 antibody is un-conjugated
Application:	Western Blotting (WB), Immunohistochemistry (IHC)

Product Details

Purpose:	Polyclonal Antibody to Protein Phosphatase 3, Regulatory Subunit 1 (PPP3R1)
Immunogen:	Recombinant Protein Phosphatase 3, Regulatory Subunit 1 (PPP3R1) corresponding to Gly2~Val170 with N-terminal His and GST Tag
Isotype:	IgG
Specificity:	The antibody is a rabbit polyclonal antibody raised against PPP3R1. It has been selected for its ability to recognize PPP3R1 in immunohistochemical staining and western blotting.
Cross-Reactivity:	Mouse, Pig, Rat
Purification:	Antigen-specific affinity chromatography followed by Protein A affinity chromatography

Target Details

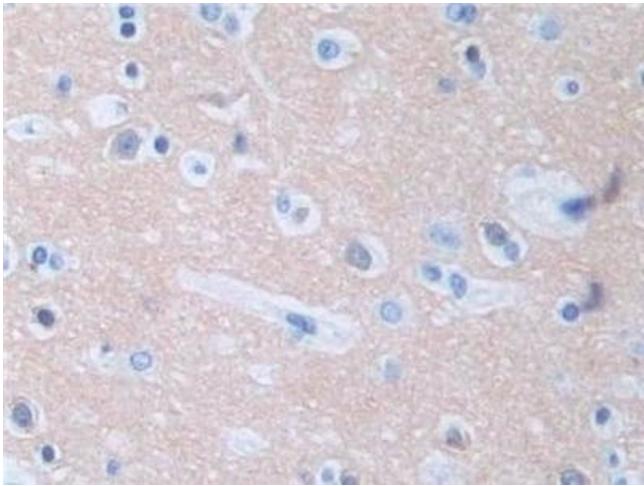
Target:	PPP3R1
Alternative Name:	PPP3R1 (PPP3R1 Products)
Background:	CALNB1, CNB, CNB1, Calcineurin B Type I, Protein phosphatase 2B regulatory subunit 1, Protein phosphatase 3 regulatory subunit B alpha isoform 1
UniProt:	P63098
Pathways:	RTK Signaling , WNT Signaling , Fc-epsilon Receptor Signaling Pathway , Protein targeting to Nucleus , VEGF Signaling , BCR Signaling

Application Details

Application Notes:	Western blotting: 0.01-2 µg/mL, Immunohistochemistry: 5-20 µg/mL, Optimal working dilutions must be determined by end user.
Comment:	The thermal stability is described by the loss rate. The loss rate was determined by accelerated thermal degradation test, that is, incubate the protein at 37°C for 48h, and no obvious degradation and precipitation were observed. The loss rate is less than 5% within the expiration date under appropriate storage condition.
Restrictions:	For Research Use only

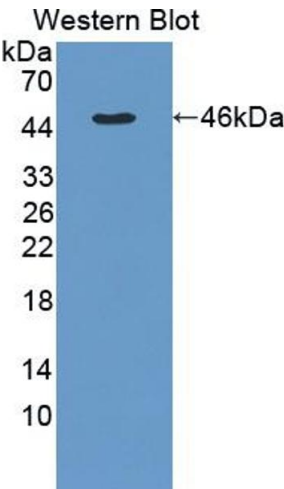
Handling

Format:	Liquid
Concentration:	0.5 mg/mL
Buffer:	PBS, pH 7.4, containing 0.02 % Sodium azide, 50 % glycerol.
Preservative:	Sodium azide
Precaution of Use:	This product contains Sodium azide: a POISONOUS AND HAZARDOUS SUBSTANCE which should be handled by trained staff only.
Storage:	4 °C, -20 °C
Storage Comment:	Store at 4°C for frequent use. Stored at -20°C in a manual defrost freezer for two year without detectable loss of activity. Avoid repeated freeze-thaw cycles.
Expiry Date:	24 months



Immunohistochemistry

Image 1. #VALUE!



Western Blotting

Image 2. Detection of Recombinant PPP3R1, Human using Polyclonal Antibody to Protein Phosphatase 3, Regulatory Subunit 1 (PPP3R1)